



# Smart Structural Bonding Solutions

**SAF METHYL METHACRYLATE ADHESIVES**



# Introducing Your Smart Structural Bonding Partner

## WORLD LEADER IN SMART ADHESIVES

For over 125 years, Bostik's adhesives have made products safer and more durable while also improving operational efficiencies and overall sustainability.

With unparalleled technical support, a global R&D network, three international Smart Technology Centers, 11 regional centers and a presence in over 40 countries, Bostik – backed by Arkema's expertise – is uniquely positioned to meet customer needs today and anticipate future needs to come.

Now, Bostik has extended its smart technology to structural bonding with innovative MMA (methyl methacrylate) adhesive solutions.



## EXPAND YOUR BONDING CAPABILITIES

Designed with patented MMA technology, Bostik's structural adhesives form the robust SAF product line. Structural and flexible, these products are uniquely formulated to bond to a wide range of dissimilar substrates, including composite, metal and plastic materials, increasing your manufacturing capabilities.

## INCREASE YOUR OPERATIONAL EFFICIENCIES

Formulated with high thixotropic properties, these adhesives allow for non-sag vertical application, which:

- **Decreases application time**
- **Reduces product waste**
- **Lowers overall cost**



**OTHER MMA**



**BOSTIK'S MMA**

## IMPROVE YOUR PRODUCT PERFORMANCE

Designed to replace traditional mechanical fasteners, Bostik's MMA solutions improve overall product performance by:

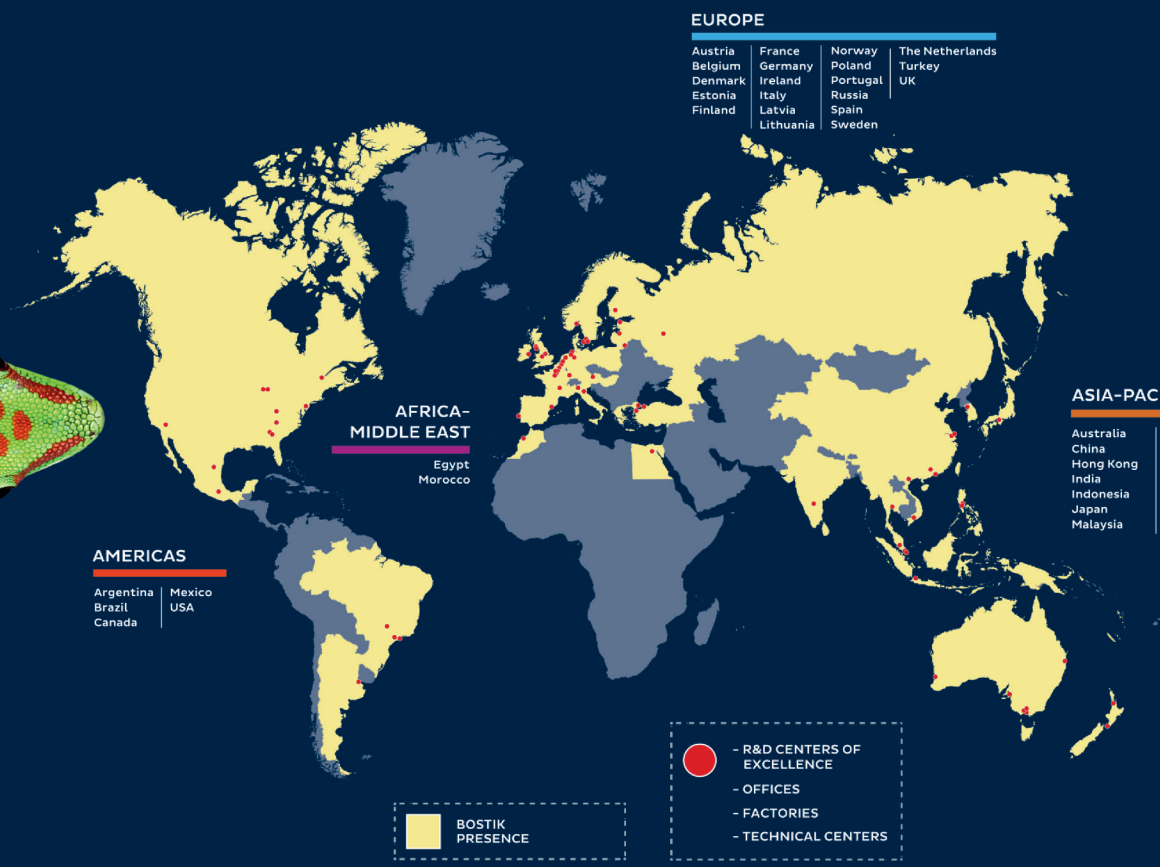
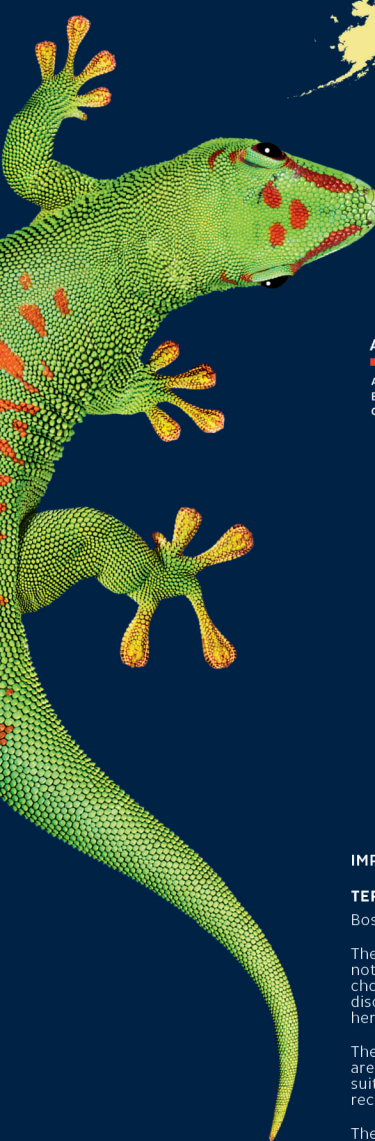
- **Protecting composite resins from bond line read-through and stresses to materials**
- **Yielding zero stress points or damage to thin aluminum panels**
- **Absorbing different coefficients of thermal expansion for increased longevity**

FEATURES	BENEFITS
Excellent environmental and chemical resistance	Unique resistance to humidity (including permanent immersion), U.V. and other aggressive environments
Permanent toughness and high elongation	Flexibility with high impact resistance even after aging
Minimal surface preparation	Time and cost reduction
Wide service temperature range	Usage between -40°C (-40°F) to 120°C (248°F) while maintaining mechanical properties
Smart viscosity formulation	Non-sag application on vertical surfaces, greater process flexibility
Wide range of open and curing times	Able to fit various application and process requirements

## PRODUCT LINE GUIDE

PRODUCT	KEY FEATURES	MIX RATIO (VOL)	COLOR	VISCOSITY	OPEN TIME (MIN)	FIXTURE TIME (MIN)	ELONGATION (%)	LAP SHEAR STRENGTH (MPa)	TENSILE STRENGTH (MPa)	MODULUS (MPa)	SHORE D HARDNESS
SAF 1023	Clear, ultra-fast curing	1:1	Translucent	Medium	45-70 (s)	3-4	16	13	12	200-250	60
SAF 30 5 SA	Structural, high modulus, ultra-fast curing	10:1	Off-white	Non-sag	3-5	8	23-30	17	12	700-900	70-80
SAF30 15 SA	Structural, high modulus, fast curing	10:1	Off-white	Non-sag	6-8	11-17	20-30	17	13	700-900	70-80
SAF30 45 SA	Structural, high modulus, medium curing	10:1	Off-white	Non-sag	20-25	30-60	20-30	17	11	700-900	70-80
SAF30 120 SA	Extended long open time, high strength resistance, high gap filling	10:1	Off-white	Non-sag, high gap filling	80-100	105-150	30	11	12	800-900	65-70
SAF Ultimate	High strength resistance, high impact resistance	4:1	Off-white	Non-sag	6-8	10-15	100	10	7	200-300	55-60
SAF Ultimate M25	Metal bonding, high impact resistance, medium curing	10:1	Off-white	Non-sag	12-15	20-25	65	14	8	400-500	60-70





**EUROPE**

Austria	France	Norway	The Netherlands
Belgium	Germany	Poland	Turkey
Denmark	Ireland	Portugal	UK
Estonia	Italy	Russia	
Finland	Latvia	Spain	
	Lithuania	Sweden	

**AMERICAS**

Argentina	Mexico
Brazil	USA
Canada	

**AFRICA-MIDDLE EAST**

Egypt
Morocco

**ASIA-PACIFIC**

Australia	New Zealand
China	Philippines
Hong Kong	Singapore
India	South Korea
Indonesia	Thailand
Japan	Vietnam
Malaysia	

**BOSTIK PRESENCE**

- R&D CENTERS OF EXCELLENCE
- OFFICES
- FACTORIES
- TECHNICAL CENTERS

**IMPORTANT – PLEASE READ BEFORE USING THIS BROCHURE**

**TERMS & CONDITIONS**

Bostik offers this Brochure for descriptive and informational use only. The Brochure is not a contract and is not a substitute for expert or professional advice.

The statements, technical information, data, and recommendations contained herein are not exhaustive, are believed to be accurate as of the date hereof, and are not warranted in any way. The Brochure relies upon your knowledge and input, and as such, its results are based solely upon the information you provide and the choices that you make. Since the conditions and methods of use of the products and the information referred to herein are beyond our control, Bostik expressly disclaims any and all liability and damages that may arise from any use of the Brochure, the products, the results therefrom, or reliance on the information contain herein, and you hereby agree to waive any and all claims against Bostik relating in any way thereto.

The Brochure is one of several tools that may be used to help you find the product best suited for your needs. It is used at your own risk, and by using it, you are knowingly accepting and assuming any and all risks associated with its use, recommendations, output and your selections. You are responsible to test the suitability of any product in advance for any intended use. Bostik does not guarantee the reliability, completeness, use, or function of the Brochure or any recommendations arising therefrom. The data and information are provided 'AS IS'.

The information provided herein relates only to the specific products designated and may not be applicable when such products are used in combination with other materials or in any process. **Bostik encourages you to read and understand the Technical Data Sheet and the Safety Data Sheet for all products**, which are located on our corporate website.

NO WARRANTY OF FITNESS FOR ANY PARTICULAR PURPOSE OR WARRANTY OF MERCHANTABILITY, EXPRESSED OR IMPLIED, IS MADE CONCERNING THE PRODUCTS DESCRIBED OR THE INFORMATION PROVIDED HEREIN, AND SUCH WARRANTIES ARE HEREBY DISCLAIMED. Bostik disclaims any liability for direct, incidental, consequential, or special damages to the maximum extent allowed by law. Nothing contained herein constitutes a license to practice under any patent, and it should not be construed as an inducement to infringe any patent. You are advised to take appropriate steps to be sure that any proposed use of the products will not result in patent infringement.

**By using this Brochure, you are hereby consenting to the above terms and conditions of use, and you agree to waive certain rights as set forth above.**

**Bostik**  
 an Arkema company  
 www.bostik.com