



Get on Board!

SMART ADHESIVES FOR BUS & COACH



Bostik, a leading adhesive specialist

As one of the largest adhesive and sealant companies, Bostik's business involves more than just sticking things together. Our adhesives are used in a wide range of industries, from industrial manufacturing, assembly and transportation, to everyday mobility improvement applications.



Bostik has patented over 9,000 technologies for various applications. Today, we operate in the industrial, construction and consumer sectors in more than 50 countries.

Bostik in Transportation

Bus, rail and automotive manufacturers require adhesive technologies that are able to cope with the unique conditions of each region, such as high temperatures or UV exposure.

For buses, coaches and shuttles, Bostik develops an intelligible shortlisted range of technologies covering multiple manufacturing applications and constraints.

Bostik provides a wide range of technologies adapted to multiple applications for the interior and exterior, keeping in mind the need of manufacturers for safer, lighter, and more sustainable solutions.

50% OF BUS MANUFACTURERS ARE USING BOSTIK TECHNOLOGIES

75% OF SMP IN BUS APPLICATIONS COME FROM BOSTIK

98% OF BUS APPLICATIONS CAN BE SOLVED WITH BOSTIK TECHNOLOGIES



Aligned with manufacturers priorities



Safety

Remain committed to create products that comply with stringent safety standards, ensuring the health and well-being of the individuals who manufacture and benefit from the products.



Lightweight

Bus manufacturers are redesigning their products and seek for any opportunity to integrate lighter materials, without compromising on their performance and added value.



Sustainability

Bus manufacturers face increasingly stringent environmental regulations, need reliable suppliers to develop responsible production processes and study their product's life cycle.

SIDE PANELS

SMP Range (ISR / STR)

PU Range (PSR)

MMA Range (SAF / FIT)

SEALING FINISHING

SMP Range (ISR / STR)

PU Range (PSR)

WINDOW FINISHING

SMP Range (ISR / STR)

PU Range (PSR)

WHEEL HOUSES

SMP Range (ISR / STR)

PU Range (PSR)

MMA Range (SAF / FIT)

FLOOR PANELS

SMP Range (ISR / STR)

PU Range (PSR)

FLOOR COVERING

SMP Range (ISR / STR)

Water Based Range

Solvent Based Range (COFIX)

HMPSA Range (TLH)

Interior

MAIN APPLICATIONS

Bostik offers solutions for a wide range of interior applications, including:

- **Seats & Trim**
- **Flooring & Roofing**
- **Cockpit & Components**
- **Glazing**

Depending on the application, Bostik proposes solutions based on different technologies:

- **Sealants / Adhesives**
- **Structurals**
- **Liquid systems**
- **Hotmelt adhesives**

Bostik's offer allows a bus manufacturer to choose a high performance solution mixed with, depending on the need, key characteristics such as:

- **Ease of use**
- **Low VOC**
- **CMR free**
- **Solvent free**
- **Lightweight**

+ Repair

- **Engineering Adhesives**
- **2KPU**

DRIVER AREA

SMP Range (ISR / STR)
MMA Range (SAF / FIT)

LUGGAGE RACKS

MMA Range (SAF / FIT)
HMPSA Range (TLH)

DESTINATION SIGN

SMP Range (ISR / STR)

SEATS AND COMPOSITES

MMA Range (SAF / FIT)
Water Based Range
Solvent Based Range (COFIX)
Hotmelt Range (TLH)



WINDSCREEN

SMP Range (ISR / STR)
PU Range (PSR)

SIDE WINDOWS

SMP Range (ISR / STR)
PU Range (PSR)
Butyl Range

SEALING WINDOWS

SMP Range (ISR / STR)

SIDE PANELS

SMP Range (ISR / STR)
PU Range (PSR)
MMA Range (SAF / FIT)
Butyl Range

DOOR PANELS & WINDOWS

SMP Range (ISR / STR)
PU Range (PSR)
MMA Range (SAF / FIT)



Exterior

MAIN APPLICATIONS

Bostik offers solutions for a wide range of exterior applications, including:

- **Glass Bonding & Sealing**
- **Panel Bonding**
- **Chassis Bonding**
- **Various Sealings**

Depending on the application, Bostik proposes solutions based on different technologies:

- **Sealants / Adhesives**
- **Structural adhesives**
- **Hotmelt adhesives**

Bostik's offer allows a bus manufacturer to choose a high performance solution mixed with, depending on the need, key characteristics such as:

- **Ease of use**
- **Low VOC**
- **CMR free**
- **Solvent free**
- **Lightweight**

+ Repair

- **Engineering Adhesives**
- **2KPU**

EMERGENCY EXITS

SMP Range (ISR / STR)
PU Range (PSR)
Butyl Range

ROOF PANELS

SMP Range (ISR / STR)
PU Range (PSR)

HVAC

SMP Range (ISR / STR)

FRONT AND REAR ENDS

SMP Range (ISR / STR)
PU Range (PSR)

LUGGAGE DOORS

SMP Range (ISR / STR)
PU Range (PSR)
MMA Range (SAF / FIT)

CHASSIS

MMA Range (SAF / FIT)



Interior



	SEALANTS / ADHESIVES		STRUCTURAL	LIQUID		HOTMELT
	SMP	PU	MMA	WATER BASED	SOLVENT BASED	HMP/SA/PO
Side Panels	•	(•)	•			
Floor Panels	•	(•)				
Floor Covering	•			•	•	•
Wheel Houses	(•)	(•)	•			
Rear Seat Composite	(•)		•			
Seats			•	•	•	•
Window Finishing	•	(•)				
Sealing Finishing	•	(•)				
Luggage Racks	(•)		•			•
Driver Area	•		•			
Destination Signs	•					

• Recommended
(•) Possible

Sealants / Adhesives systems are designed to meet all bonding and sealing requirements, while significantly reducing production time. Bostik has been the market leader with its high end value free isocyanate ISR range SMP technology. Their UV resistance makes them ideal for sealing the windows and body construction of buses and RVs. SMP products also save time in the painting process. Paint can be applied after the bead has formed a skin layer; while polyurethane sealants need to have fully cured prior to painting.

Structural adhesives are load-bearing, they add strength to the final part that is being bonded for durability and Bostik MMA provides a unique balance of high strength, impact and fatigue resistance, flexibility, elongation, shear and peel strength, and are usable within a wide temperature range. They cure at ambient temperatures with controlled cure speed and allow little to no surface preparation. They are not moisture sensitive and are water and chemical resistant.



Exterior

	SEALANTS / ADHESIVES		STRUCTURAL	BUTYL
	SMP	PU	MMA	Butyl (liquid or tape)
Front & Rear Ends	•	(•)	(•)	
Windscreen	•	(•)		
Side Windows	•	(•)		•
Sealing Windows	•			
Side Panels	•	(•)	•	•
Luggage Doors	•	(•)	•	
Door Panels & Windows	•	(•)	•	
Emergency Exits	•	(•)		•
Roof Panels	•	(•)	(•)	
HVAC	•			
Chassis			•	

• Recommended
(•) Possible

Using **Hotmelt** adhesives for a range of applications offers the following advantages: optimal holding power to corrugated material, superior flexibility for better performance under constant stress, and quick adhesion. Bostik's **Butyls** for exterior applications non-hardening mastic sealants designed to form a weatherproof and dustproof seal, which stays permanently flexible. HMPA/PO for interior applications provide instant bonds as they solidify by cooling, and remain permanently tacky.

Liquid adhesives are sprayable and offer excellent adhesion to low surface energy substrates. Solvent based adhesives are designed for pressure bonding application with a fast dry time, quick processing, and excellent creep resistance and green strength. Water-based adhesive technology is an environmentally friendly product. Water-based adhesive technology are highly versatile materials capable of adhesion to many substrates. They offer high tack and good water and heat resistance.

European product sheet

SEALANTS / ADHESIVES

Products	Technology	Application	Skimming time	Elongation	Technology advantages
ISR 70-08 AP	SMP	Windscreen	15 min	200%	Isocyanate free, Primerless, Odourless, Low VOC, Easy handling, Efficient, Storage stability, Reliable
ISR 70-05 AP	SMP	Bonding	15 min	200%	Isocyanate free, Primerless, Odourless, Low VOC, Easy handling, Efficient, Storage stability, Reliable
ISR 70-03	SMP	Sealing and Bonding	10 min	250%	Isocyanate free, Primerless, Odourless, Low VOC, Good initial strength, Efficient, Storage stability, Reliable
ISR 70-03 sskf	SMP	Sealing and Bonding	20 min	250%	Isocyanate free, Primerless, Odourless, Low VOC, Good initial strength, Efficient, Storage stability, Reliable
STR 60-05	SMP	Bonding	15 min	100%	High modulus for bonding, Easy to apply, Silicone, PVC and isocyanate free
STR 60-03	SMP	Sealing and Bonding	30 min	300%	Excellent UV stability and ageing properties, Easy to apply, Solvent, isocyanate, and PVC free
PSR 50-08	PU	Windscreen	35 min	300%	One-component, high viscosity, Flexible and high performance elastomeric polyurethane, Solvent free, Odourless and also nonconductive
PSR 50-01	PU	Sealing	90 min	750%	High elasticity, Bubble free curing, Non-sagging properties
PSR 40-08	PU	Windscreen	20 min	500%	One-component, Fast curing, Flexible and high performance polyurethane adhesive for the bonding of vehicle glass direct glazing
PSR 40-03	PU	Sealing and Bonding	70 min	650%	Suitable for sealing and bonding applications, Good open time, Cost effective product
PSR 40-01	PU	Sealing	120 min	750%	Suitable for sealing applications, High elasticity, Cost effective

STRUCTURAL ADHESIVES

Products	Technology	Application	Open Time	Elongation	Lap Shear Strength	Technology advantages
FIT30 15	MMA	Metal and galva bonding, composites. High peel resistance	5-7 min	30%	20 MPa	Structural bonding, High modulus, Primerless, Fast curing, Non-sagging, Reliable, Composite, Metal
SAF Ultimate 10	MMA	Very fast setting, metal, plastics, composite	5-6 min	90%	18 MPa	Fast curing. Metal bonding, Impact resistance, Primerless
SAF Ultimate 15	MMA	Panel bonding, plastic, composites. Fast curing	6-8 min	90%	15 MPa	High impact resistance, Fast curing Powder coating resistance, Primerless
SAF Ultimate 25	MMA	Large panel bonding, plastics, composites	12-15min	120%	17 MPa	Metal bonding, High impact resistance, Medium curing, Primerless

LIQUID ADHESIVES

Products	Technology	Application	Application Temp.	Application Method	Technology advantages
COFIX	SB	Bonding	+15°C - +30°C	Spatula, roller or brush	PVC Flooring: Solvent based adhesive
COFIX S	SB	Bonding	+15°C - +30°C	Spray	PVC Flooring: Solvent based adhesive
Bostik 31	WB	Bonding	+15°C - +30°C	Brush & Trowel	PVC Flooring: Waterbased contact adhesive
Bostik's Best	WB	Bonding	+15°C - +30°C	Brush & Trowel	PVC Flooring: Waterbased contact adhesive

HOTMELT ADHESIVES

Products	Technology	Application	Application Temp.	Application Method	Technology advantages
H9438	HMPO	Seats, Floor covering and Luggage Racks	+180°C - +200°C	Roll coater and slot die nozzle	High green strength, High temperature resistance
TLH 2211 E	HMP5A	Seats, Floor covering and Luggage Racks	+150°C - +180°C	Roll coater and slot die nozzle	Good balance peel and tack, High shear resistance and Can be foamed

BUTYL

Products	Technology	Application	Application Temp.	Application Method	Technology advantages
B1183	Butyl	Side windows, Side panels, Emergency exits	Room Temperature	Rolls	Permanent plastic and permanent tacky, Excellent aging and weather resistance
B1590	Solvented Butyl	Side windows, Side panels, Emergency exits	Room temperature	Hand or compressed air gun	High sealing performance

PRIMERS AND CLEANERS

Products	Application
Cleaner I	Simson Cleaner I is an ideal cleaner for cleaning and degreasing of substrates
Prep G	Prep G has been developed as a black pre-treatment for use on glass that is not protected from UV by a ceramic coating.
Prep CS	Simson Prep CS is a one-step pretreatment for the improvement of the adhesion on closed substrates.

REPAIR

Products	Technology	Application
Repair	Cyanoacrylate	Plastic repair, Gap filling
Flex	Cyanoacrylate	Application for vibration resistance
Structural	Cyanoacrylate	Application requires process flexibility
XPU20102	2KPU	Plastic repair for interior and exterior, bumpers etc.



Bostik is prepared for the future



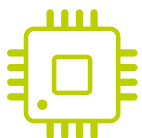
Electrification

Beyond the traditional applications detailed before, Bostik's product portfolio is evolving to support bus manufacturers in their new challenges.



Connectivity

Bostik is now able to propose **engineering adhesives** for applications in the E&E, in line with the development of the electrification of the powertrain, the multiplication of sensors, and the advent of infotainment.

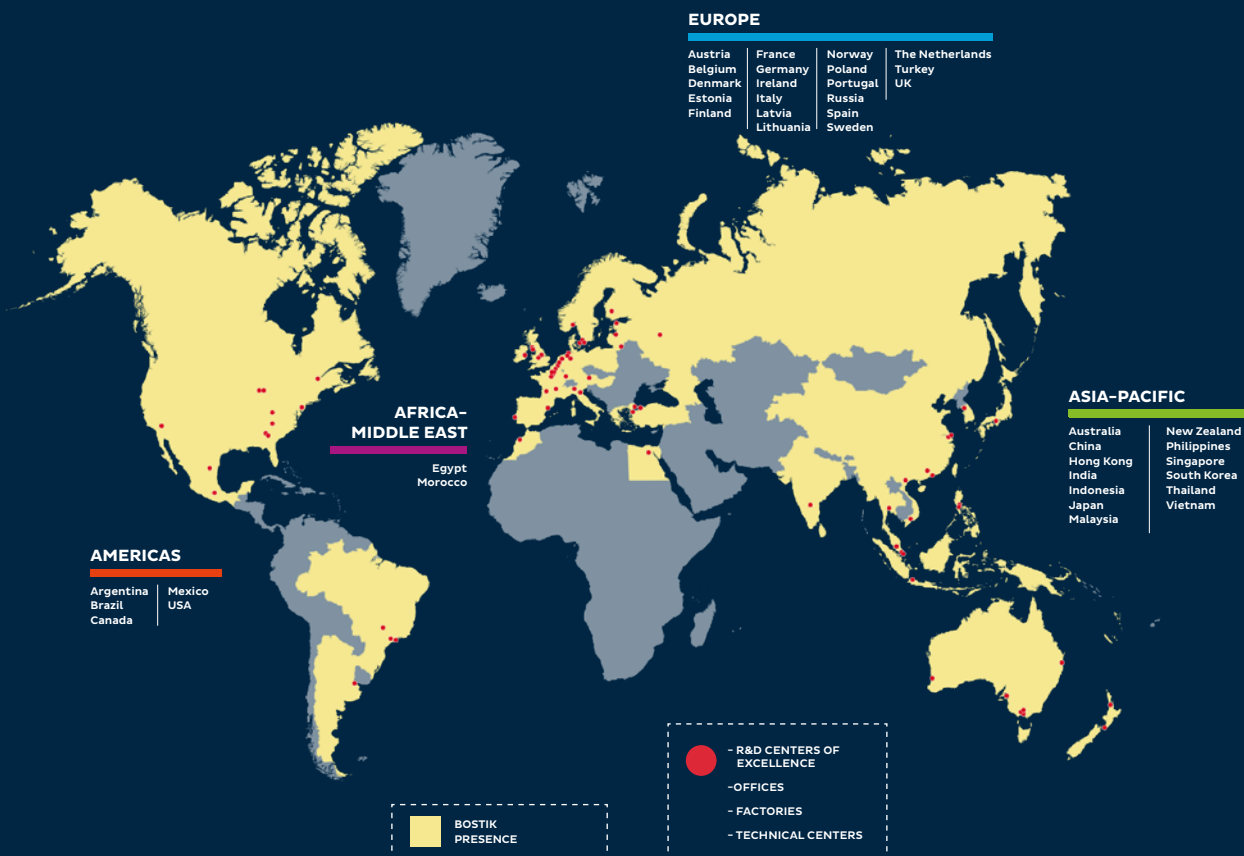


Autonomous driving

As part of the Arkema group, Bostik benefits of a dynamic environment in these new domains of application.



Smart Help: Please contact your sales representative.



IMPORTANT – PLEASE READ BEFORE USING THIS BROCHURE TERMS & CONDITIONS

Bostik offers this Brochure for descriptive and informational use only. The Brochure is not a contract and is not a substitute for expert or professional advice.

The statements, technical information, data, and recommendations contained herein are not exhaustive, are believed to be accurate as of the date hereof, and are not warranted in any way. The Brochure relies upon your knowledge and input, and as such, its results are based solely upon the information you provide and the choices that you make. Since the conditions and methods of use of the products and the information referred to herein are beyond our control, Bostik expressly disclaims any and all liability and damages that may arise from any use of the Brochure, the products, the results therefrom, or reliance on the information contain herein, and you hereby agree to waive any and all claims against Bostik relating in anyway thereto.

The Brochure is one of several tools that may be used to help you find the product best suited for your needs. It is used at your own risk, and by using it, you are knowingly accepting and assuming any and all risks associated with its use, recommendations, output and your selections. You are responsible to test the suitability of any product in advance for any intended use. Bostik does not guarantee the reliability, completeness, use, or function of the Brochure or any recommendations arising therefrom.

The data and information are provided 'AS IS'.

The information provided herein relates only to the specific products designated and may not be applicable when such products are used in combination with other materials or in any process. Bostik encourages you to read and understand the Technical Data Sheet and the Safety Data Sheet for all products, which are located on our corporate website.

NO WARRANTY OF FITNESS FOR ANY PARTICULAR PURPOSE OR WARRANTY OF MERCHANTABILITY, EXPRESSED OR IMPLIED, IS MADE CONCERNING THE PRODUCTS DESCRIBED OR THE INFORMATION PROVIDED HEREIN, AND SUCH WARRANTIES ARE HEREBY DISCLAIMED. Bostik disclaims any liability for direct, incidental, consequential, or special damages to the maximum extent allowed by law. Nothing contained herein constitutes a license to practice under any patent, and it should not be construed as an inducement to infringe any patent. You are advised to take appropriate steps to be sure that any proposed use of the products will not result in patent infringement.

By using this Brochure, you are hereby consenting to the above terms and conditions of use, and you agree to waive certain rights as set forth above.

Bostik SA
420 rue d'Estienne d'Orves
92705 Colombes Cedex
www.bostik.fr
an Arkema company

