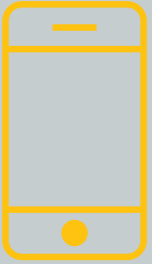


#BostikProFloor



**SMART
TOOLS**
WEB APP

> 12



INTERVIEW
WITH BOSTIK'S
NATIONAL SALES
MANAGER

> 14

BIM
bang!

**BOSTIK
GETS IN THE
BUILDING
INFORMATION
MODELLING
ERA**

> 20

So
Smart!

**ONE
FLOORING
RANGE**

DISCOVER
OUR NEW RANGE
OF SMART
FLOORING SYSTEMS

> 6



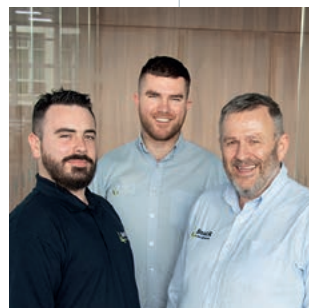
Contents

#BostikProFloor

**BOSTIK,
THE
FLOORING
SPECIALIST**

SEE >

5



ONE FLOORING RANGE

INTRODUCING
OUR NEW SMART
ADHESIVE RANGE

+ SMART TOOLS

To help installers and distributors
in their daily life

SEE >

6



So
smart!



inter vieww

WITH
STEWART LACEY
NATIONAL SALES
MANAGER

SEE >

14

SOCIAL
COMMITMENT,

ARKEMA'S
DNA

Interview with
Virginie Delcroix

SEE >

16

**BOSTIK
COMMITTED TO
SUSTAINABLE
CONSTRUCTION**

SEE >

18

BIM bang!

**BOSTIK
GETS IN THE
BUILDING
INFORMATION
MODELLING
ERA**

SEE >

20

**INNOVATION
AND EXPERTISE**

SEE >

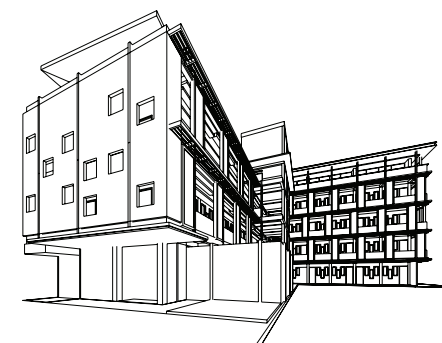
22

**PORTRAIT OF
A BUILDING SITE**

BOSTIK HAS
DEVELOPED
A UNIQUE
TECHNOLOGY
FOR SELF
LEVELLING
SCREED

SEE >

24



**FLOOR
PREPARATION
AND ADHESIVES:**
THE FOUNDATION OF
THE FLOOR COVERING

SEE >

26

iNSTaLLaTioN

LVT
PRODUCT
AND SYSTEM
RECOMMENDATIONS

SEE >

28



PRODUCTS

30

**FLOOR
PREPARATION**



38

**SOFT FLOOR
ADHESIVES**

STIX / FIX / CONTACT



44

**WOOD FLOOR
ADHESIVES**



46

**ANCILLIARY
PRODUCTS**

BOSTIK IS PART OF THE ARKEMA GROUP, A WORLD LEADER IN SPECIALITY CHEMICALS

ARKEMA
INNOVATIVE CHEMISTRY

A GLOBAL MANUFACTURER IN SPECIALITY CHEMICALS AND ADVANCED MATERIALS, THE ARKEMA GROUP REPORTS ANNUAL SALES OF €8.8 BILLION. BUOYED BY THE COLLECTIVE ENERGY OF ITS 20,500 EMPLOYEES, ARKEMA OPERATES IN CLOSE TO 55 COUNTRIES AND WORKS RELENTLESSLY TO PUT IN PLACE PIONEERING AND SUSTAINABLE SOLUTIONS AROUND 6 R&D PLATFORMS.



NEW ENERGIES



BIO-BASED PRODUCTS



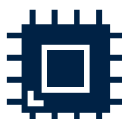
WATER MANAGEMENT



HOME EFFICIENCY AND INSULATION



LIGHTWEIGHT MATERIALS AND DESIGN



ELECTRONICS SOLUTIONS

BOSTIK THE SPECIALITY ADHESIVES BUSINESS LINE OF ARKEMA

% OF SALES PER BUSINESS SEGMENT

25%

ADHESIVES (BOSTIK)

HIGH PERFORMANCE MATERIALS 45%

22%

ADVANCED MATERIALS

31%

INDUSTRIAL SPECIALTIES

24%

COATING SOLUTIONS



BOSTIK, A WORLD LEADER IN ADHESIVE TECHNOLOGIES...



€2 BILLION ANNUAL SALES 2018



6,000+ EMPLOYEES

500+ DEVELOPMENT & TECHNICAL STAFF



4 GLOBAL R&D CENTERS BOSTIK SMART TECHNOLOGY CENTERS



OPERATIONAL EXCELLENCE

...WITH STRONG AND RELIABLE EXPERTISE ALL OVER THE WORLD AND A FORWARD THINKING STANCE ON THE MARKET



BOSTIK, THE FLOORING SPECIALIST

The size of a flooring project doesn't necessarily determine its complexity. Every day presents a new challenge for flooring professionals, so having solutions that they can depend on to help them meet these challenges is essential.

We recognise that high quality products, excellent service and reliability are essential requirements that a flooring contractor expects from a manufacturer. Bostik is relied upon as a world expert in flooring to respond to the most complex site issues.

The Bostik team is made up of an attentive sales force, precise technicians and experienced researchers. Each member brings their own expertise and shares the same passion and team spirit. They work day after day alongside flooring contractors and installers to overcome any challenge the project presents.

Let's join forces to build tomorrow's projects.

OUR TEAM IS YOUR TEAM

So smart!

ONE FLOORING RANGE
SOMETHING NEW TO LAY YOUR HANDS ON
FOLLOW THE GUIDE

A TRUE SPECIALIST IN FLOORING

The seven steps to success!

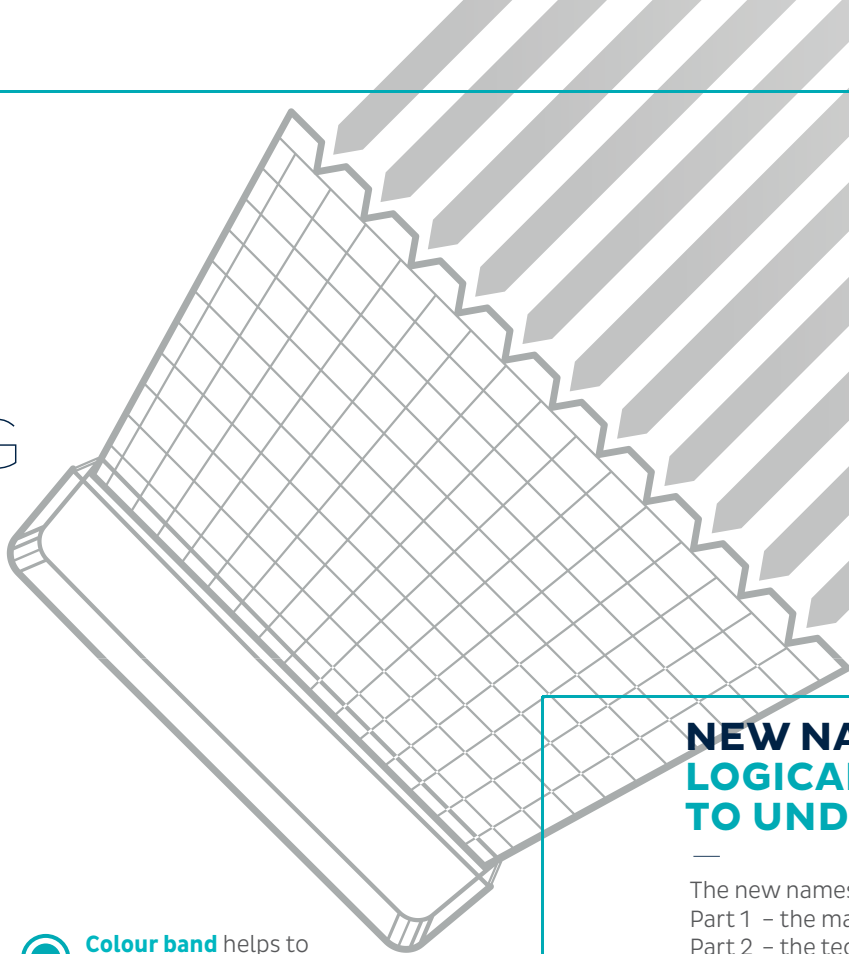
- 1 Collaboration with flooring manufacturers
- 2 Support from our technical team with recommendations and training
- 3 Business support from our sales team
- 4 Historical know-how and experience
- 5 Comprehensive, clear and consistent range of products
- 6 High quality products
- 7 Provide smart tools to help installers and distributors in their daily life



NEW DESIGN
SMART AND
EYE-CATCHING

NEW ADHESIVE RANGE

So smart!



Unit **size** and coverage **stand out**

Our **smart solutions** are clearly identified with main benefits and certifications on the front of pack

Clear **icons** to highlight main product characteristics

Colour band helps to quickly identify the field of use

Bold product name with **dedicated colour** to aid product selection

Simple **diagram** to show how the product is used



Suitable uses and benefits in **6 languages** on the front of pack

NEW NAMES
LOGICAL AND EASY
TO UNDERSTAND

The new names come in three parts:
Part 1 – the market segment
Part 2 – the technology and performance
Part 3 – the characteristics

FOR ALL YOUR NEEDS

With the Bostik flooring range, you get multiple systems which answer all of the technical requirements an installer may face on site.

STIX A740
MULTI BEST

MARKET SEGMENT

- GRIP = Primer
- SL = Smoothing compound
- STIX = Soft floor adhesive
- FIX = Tackifier
- CONTACT = Contact adhesive
- WOOD = Wood floor adhesive

TECHNOLOGY + PERFORMANCE LEVEL

- A = acrylic
- H = hybrid
- N = neoprene
- P = polyurethane

- Specialty — **900**
- Best — **800**
700
- Better — **500**
- Good — **300**
200
100

CHARACTERISTIC

- CLASSIC
- MULTI
- BEST
- TEX
- ELASTIC
- PREMIUM



SOFT FLOORING

STIX
/ Adhesives for all kinds of soft floor coverings

FIX
/ Tackifiers

CONTACT
/ Contact adhesives



A WIDE PORTFOLIO OF FLOORING SOLUTIONS



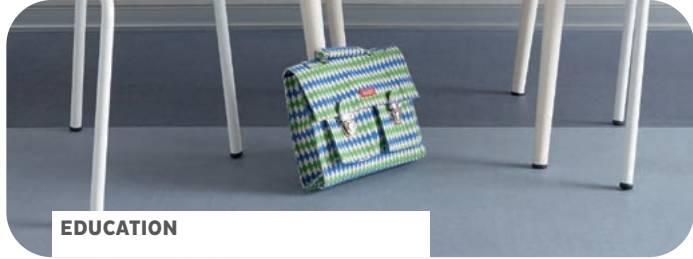
WOOD FLOORING

WOOD
/ Adhesives for all kinds of solid and engineered wood floors

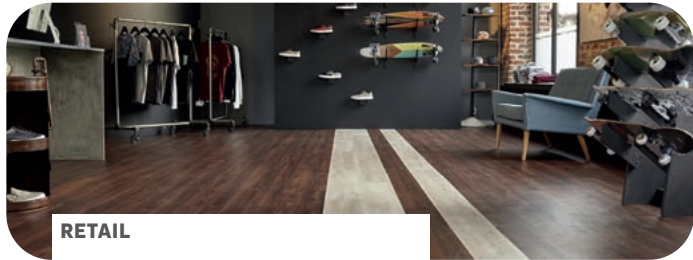
SOLUTIONS AVAILABLE FOR ALL SECTORS



HEALTH CARE



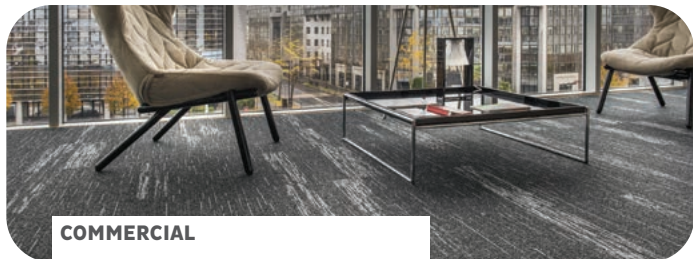
EDUCATION



RETAIL



HOSPITALITY, TRAVEL & LEISURE



COMMERCIAL



RESIDENTIAL



TO HELP
INSTALLERS
AND
DISTRIBUTORS
IN THEIR
DAILY LIFE

Smart tools

www.bostik-proflood.co.uk

PRODUCT FAN
OUR ENTIRE
NEW RANGE
AT A GLANCE!



Easily find
the right product
for you!



WEB APP PRACTICAL AND USER FRIENDLY

- 4 smart features:
- Scan EAN code or search with name/code to find your product!
 - Download Technical Data Sheets
 - Call our technical team or visit our website
 - Create your account to store your favourite product information

interview

WITH
STEWART LACEY
NATIONAL SALES
MANAGER



"I REALLY ENJOY WORKING WITH CUSTOMERS,
BUT IT'S THE TEAM AT BOSTIK THAT MAKES
COMING INTO WORK SO WORTHWHILE"



1

WHAT WAS YOUR FIRST JOB?

"My first job was a paperboy, but if we're talking first 'real' job, it was at a men's clothing company called Concept Man, which later became River Island. I started on the shop floor and worked my way up to become store manager. I may no longer be working in the fashion industry, but the sense of style has never left me..."

6

WHAT DO YOU THINK ARE THE POSITIVE AND NEGATIVE ASPECTS OF THE FLOORING INDUSTRY?

"For me the positives are seeing young people enter the industry with fresh ideas. It certainly keeps me on my toes, and I get a real sense of pride in seeing them carve out a career for themselves in the flooring industry."

The negatives are when projects become a race to the bottom. It's tempting for people to cut corners, but when they have to replace a newly fitted floor because it has failed, they'll end up paying more in the long run – it's a false economy."

2

HOW DID YOU GET INTO THE FLOORING INDUSTRY?

"By my early twenties, I figured I was most suited to a sales role, so I applied for an area sales manager job at a domestic vinyl manufacturer. I really enjoyed working in the flooring industry, so I decided to pursue it as a career."

7

WHAT DO YOU THINK THE FUTURE HOLDS FOR THE FLOORING INDUSTRY?

"Sustainability will have a massive part to play, both in terms of recycling old flooring and incorporating recycled material into the manufacture of new technologies and packaging. This ties in with the greater demand we're seeing for products that offer a reduced impact on the environment and safer working conditions for the floor layer."

3

WHEN DID YOU JOIN BOSTIK?

"I joined in April 2001 when the company was still known as Laybond, before being acquired by Bostik a few years later. I was an areas sales manager for East Anglia and North London."

4

WHAT'S THE BEST THING ABOUT WORKING AT BOSTIK?

"The people. I really enjoy working with customers, but it's the team at Bostik that makes coming into work so worthwhile. I'm obviously close to the flooring team, but there's so many characters throughout the whole business who I would class as friends."

8

HOW DO YOU KEEP BUSY OUTSIDE OF WORK?

"When I'm not spending time with my wife and kids I'm out riding my motorbike – my dream bike is a Honda CBR1000RR-R Fireblade 2020"

5

WHAT'S THE BEST ADVICE YOU COULD GIVE TO SOMEONE NEW COMING INTO THE FLOORING INDUSTRY?

"Be patient. A lot of people have been in this industry a long time, so they will see straight through you if you pretend to know something you don't. If you're honest and you work hard to build relationships and improve your knowledge, you'll earn the respect of your customers and your peers."

9

WHAT'S YOUR FAVOURITE HOLIDAY DESTINATION?

"Any of the Greek islands – I love the scenery, the way of life... and the food!"

10

FINALLY, IF YOU COULD BE ANY CHARACTER FROM FILM OR TV, WHO WOULD YOU BE?

"It would have to be Arnold Schwarzenegger – from his Terminator days rather than his stint as the Governor of California!"

#BostikProFloor

SOCIAL COMMITMENT,

ARKEMA'S

DNA

THE SOCIAL COMMITMENT CHARTER ADOPTED IN 2018 IS AN EVEN STRONGER AFFIRMATION OF OUR DESIRE TO SET A GOOD SOCIAL AND ENVIRONMENTAL EXAMPLE...

Vice President for sustainable development, VIRGINIE DELCROIX brings us up to speed.



In May 2018, Thierry Le Hénaff signed Arkema's Social Commitment Charter, which has reshaped our CSR strategy. Is Arkema taking a new approach to corporate social responsibility?

Virginie Delcroix – Adopting this charter is a strong signal that our CEO and Executive Committee are committed to taking CSR – an ever more important cornerstone of Arkema's growth – further.

Our CSR strategy is expressed through three robust commitments:

- 1) Innovation driven, sustainable solutions
- 2) Responsible management of industrial activities
- 3) Open dialogue and close relationships with stakeholders

Backed by our attention to innovation, safety, employee engagement and establishing roots in our communities, this strategy clarifies and gives more meaning to the CSR commitments of the company and our employees.

Since Arkema's creation in 2006, we have repeatedly asserted our intention to be a responsible chemical producer, one that aims higher than regulatory requirements as it looks to meet the most ambitious global standards. We adhere to the Responsible Care® initiative and the U.N. Global Compact and have made the United Nations' 17 Sustainable Development Goals the cornerstone of our CSR strategy.

We are deploying the necessary resources to achieve our goals, through an innovation strategy focused mainly on the key sustainability challenges and the introduction of proactive programmes. A number of specific commitments support the charter, in areas such as innovation, safety, health, the environment and quality, human rights, business ethics and the fight against corruption.

“WE HAVE MADE THE UNITED NATIONS' 17 SUSTAINABLE DEVELOPMENT GOALS THE CORNERSTONE OF OUR CSR STRATEGY.”

Stakeholder dialogue is a core focus of Arkema's social commitment. How do you approach it?

VD – It's pivotal. We can't create sustainable value for society unless we listen to society. Locally, that's what our dynamic, more than 15-year-old Common Ground® programme is for, via outreach to local councils, not for profit organisations, schools and universities, as well as people living or working near our sites. Our business units constantly interact with customers, suppliers and business partners.

More broadly, in 2016 we conducted our first materiality analysis, nailing down the expectations of all stakeholders, both internal; employees and employee representatives; and external; customers, suppliers, NGOs, shareholders, neighbours, media and regulatory authorities.

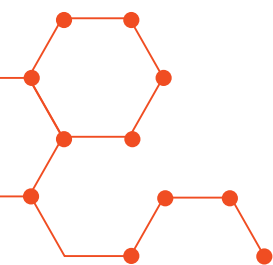
An analysis of the results showed strong consistency in how our internal and external stakeholders prioritised the topics considered relevant (or salient) for Arkema. It also pinpointed areas for improvement and added new strategic goals, such as diversity. An annual dialogue initiative followed, with a stakeholder panel that had a significant impact on our thinking and our social commitment charter. A second materiality analysis began in 2019, including an expanded stakeholder panel in our three main business regions.

Speaking of indicators, the Environmental Footprint Performance Indicators (EFPI), tracked at Arkema since 2012, have improved.

VD – Yes, we're all really happy about it. At year-end 2018, the intensity of our greenhouse gas emissions (down 54%), volatile organic compound emissions (down 38%), chemical oxygen demand (down 41%) and net energy purchases (down 12%) had decreased sharply from 2012 levels.

These results, driven by proactive initiatives involving best practices, capital expenditure and pivotal programs such as Arkenergy and Optim'O, reflect our mature approach to environmental issues – so much so that we've already achieved some of our long-term 2025 goals. We're going to keep pushing ahead, of course, updating certain goals in our three main business regions.





→ In 2018, Arkema undertook a systematic assessment of its products and solutions through a CSR lens. Can you tell us more about that?

VD – Arkema already offers a wide range of sustainable solutions, through our long-established choice of six innovation platforms. The systematic assessment, which began in 2018 aims to take an increasingly active approach to setting the direction for our products and solutions. The idea is to evaluate the environmental and social impacts and benefits, the potential risks and, ultimately, the contributions to the United Nations' Sustainable Development Goals. We will do so in an integrated manner, from feedstock sourcing to production processes, the way our products are used and end of life impact.

The circular economy is an integral part of this approach. In 2018, we concentrated on three pilot business units; Acrylics, Technical Polymers and Bostik; to devise the assessment method, which draws on industry guidelines such as those of the WBCSD¹. It's a long-term project that enjoys strong support from the Executive Committee and benefits from the business units' involvement.

In 2019 and 2020 we assessed most of the solutions that we market. The assessment itself is important but not the final goal. What really counts is managing the product portfolio and the sustainable growth strategy for Arkema and it's wider group of stakeholders on our three main business regions.

1. WBCSD: World Business Council for Sustainable Development



BOSTIK COMMITTED TO SUSTAINABLE CONSTRUCTION

OUR COMMITMENTS
FOCUS ON
**4 ESSENTIAL
AXES:**
Bostik is committed!



1 Environment

When developing new solutions, we place priority on offering the market environmentally-friendly solutions. We are able to monitor and assess the carbon footprint, water consumption and waste impact of our products. Bostik was among the first to produce its own Life Cycle Analysis (LCA) and provide individual Environmental Product Declarations (EPD).

Bostik's environmental and sanitary information are used for the assessment of any project, for the contribution to green building rating and for eco-friendly labelling.

2 Health

We care about the health and safety of the installers working with our products and the health of our end users. Our aim is to develop the safest solutions to improve the Indoor Air Quality (IAQ) of the building and remove potential hazardous raw materials from our formulations.

3 Comfort

We design innovative solutions to improve the quality of life of the end users and to improve the installation process for the installer. We believe that it is important to develop solutions which are easy to use, simple to apply and efficient.

4 Durability

We develop and manufacture long-lasting products with exceptional performance characteristics to ensure the sustainability of the building. We always provide high quality products, patented and certified (where required) to fulfil market requirements.





BOSTIK'S
BIM JOURNEY
HAS STARTED

IN COLLABORATION WITH
NBS NATIONAL BIM LIBRARY,
THE UK'S LEADING COLLECTION
OF BIM OBJECTS, BOSTIK
OFFERS A WIDE VARIETY OF
DIGITAL OBJECTS TO THE
CONSTRUCTION INDUSTRY,
MAKING IT EASIER THAN
EVER FOR ARCHITECTS AND
DESIGNERS TO INCLUDE
BOSTIK PRODUCTS IN THEIR
3D MODELS.

25,000
manufacturers' products

300,000
users

5,000
companies

What is BIM ?

BIM is a digital representation
of physical and functional
characteristics of a facility.
BIM involves representing a design
as combinations of 'objects' that
carry their geometry, relations
and attributes. BIM design tools
allow the extraction of different
views from a building model for
drawing production and other uses.
BIM allows all contributors to design,
visualise, simulate and communicate
throughout the building life cycle.

BOSTIK
GETS IN THE
BUILDING
INFORMATION
MODELLING
ERA WITH
THE MODELLING
OF ITS KEY
PRODUCT DATA.

BIM
bang

BOSTIK PRODUCTS DIGITALISED
AS BIM OBJECTS FOR USE BY
THE CONSTRUCTION INDUSTRY

Variety of products available

A variety of Bostik products are now
available on NBS Source in the form
of BIM objects. These can be integrated
into project conceptions in order to
simplify and improve the collaborations
between different stakeholders at each
step of the project.

A BIM object contains detailed
information about the product's
physical characteristics, certification
ratings and technical information.
The creation of these objects for
Bostik products helps open the door
to the construction industry.

Construction industry
experts can now integrate
Bostik products including
damp proof membranes,
smoothing compounds
and adhesives into their 3D
building models to make the
specification process easier.

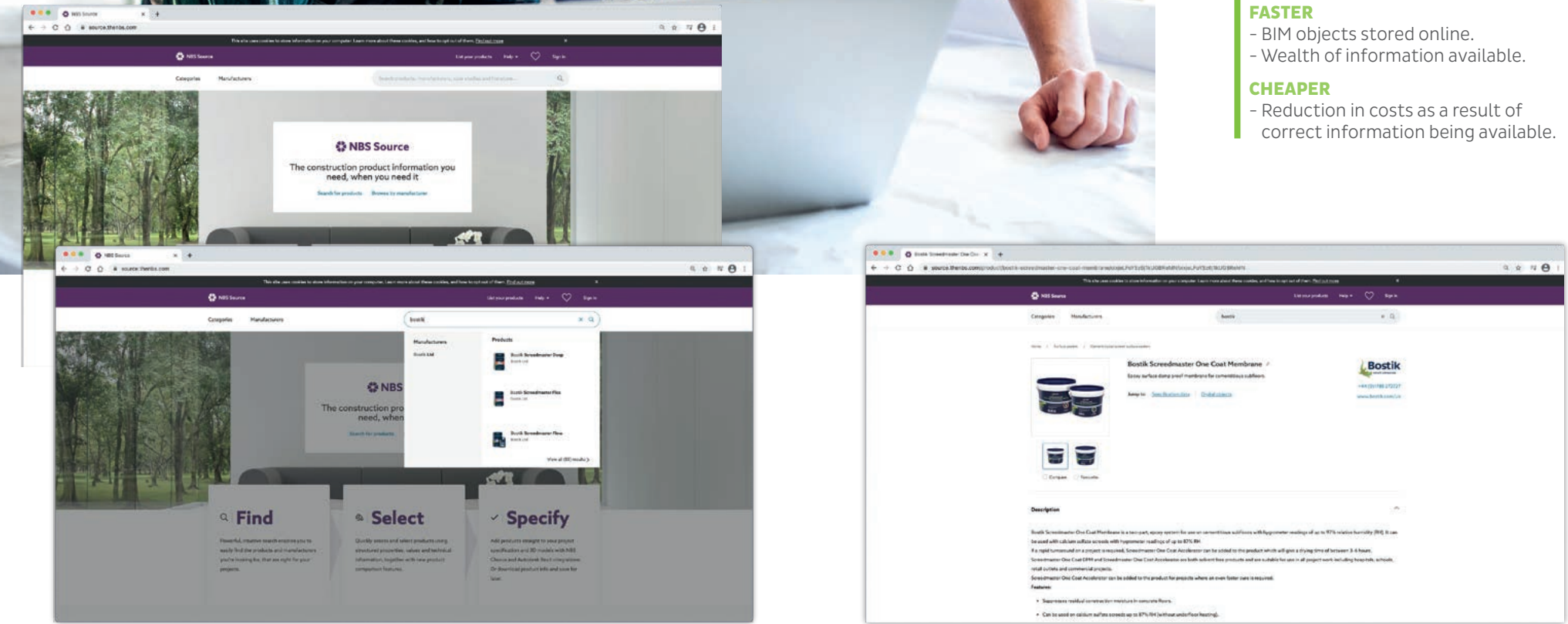
Building Information Modelling (BIM) is
a process for managing the information
produced during a construction project,
in a common format, from the earliest
stage through design, construction,
operation and finally demolition,
in order to make the best and most
efficient use of that information.

Since 2016 it has been a UK Government
requirement that all public construction
projects must be built using BIM.

TO LEARN MORE
Go to source.thenbs.com
and search for Bostik's page

MORE
EFFICIENT
CONSTRUCTION
PROCESS

- BETTER**
- Streamlined for all stakeholders.
 - Reliable and relevant data available.
- FASTER**
- BIM objects stored online.
 - Wealth of information available.
- CHEAPER**
- Reduction in costs as a result of
correct information being available.



OUR EXTENSIVE EXPERIENCE AND PROVEN KNOW-HOW IN THE FLOORING INDUSTRY ALLOWS US TO REMAIN RECEPTIVE TO THE EXPECTATIONS OF THE MARKET. WE CONTINUOUSLY INNOVATE WITH NEW SOLUTIONS THAT MAKE THE LIVES OF INSTALLERS, CONTRACTORS, ARCHITECTS AND END USERS EASIER.



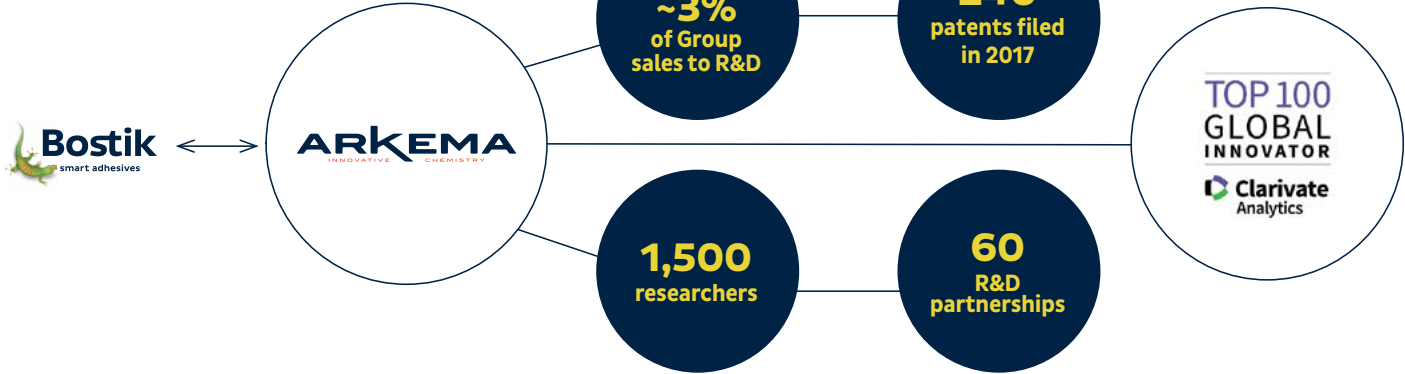
INNOVATION AND EXPERTISE

WHEN DEVELOPING NEW SOLUTIONS, WE FOCUS ON 4 PILLARS:

INNOVATION DRIVES THE DEVELOPMENT OF OUR SMART SOLUTIONS

SAFER Are safe to use & better for the environment	EFFICIENT Deliver reduced cost in use & improved productivity
FLEXIBLE Adapt to different materials and substrates	RESPONSIVE Combine performance with additional functionality

WE CONTRIBUTE TO AND BENEFIT FROM ARKEMA'S KNOW-HOW IN SPECIALITY CHEMICALS



BOSTIK

BONDS FOR LIFE

Our business is about much more than sticking things together. For over a century, we have **developed smart solutions** that touch and improve people's daily lives.

At Bostik, we imagine a wide range of product and solutions that make **our world safer, more flexible, efficient and responsive to the dynamic challenges of our environment.**

We apply innovative technologies to address regulatory compliance, sustainability and **environmental challenges.**

We remain committed to delivering safer solutions that comply with stringent safety standards to ensure the health and well-being of those manufacturing, applying and benefiting from our smart solutions.

When used as part of a complete system, our smart solutions **enable customers and users to achieve the highest levels of performance and quality.**



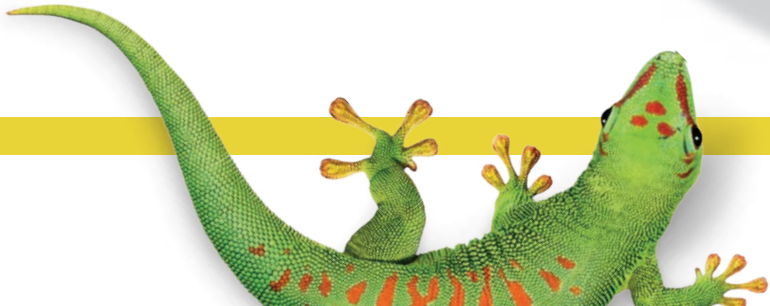
Recycled packaging

- Based on 100% recycled plastic
- 30% less CO₂ emissions
- Growing demand
- Silver-grey buckets



Aluminium foils

- Extended shelf-life up to 18 months
- Re-sealable packaging
- Perfect emptying
- Clean and easy to use

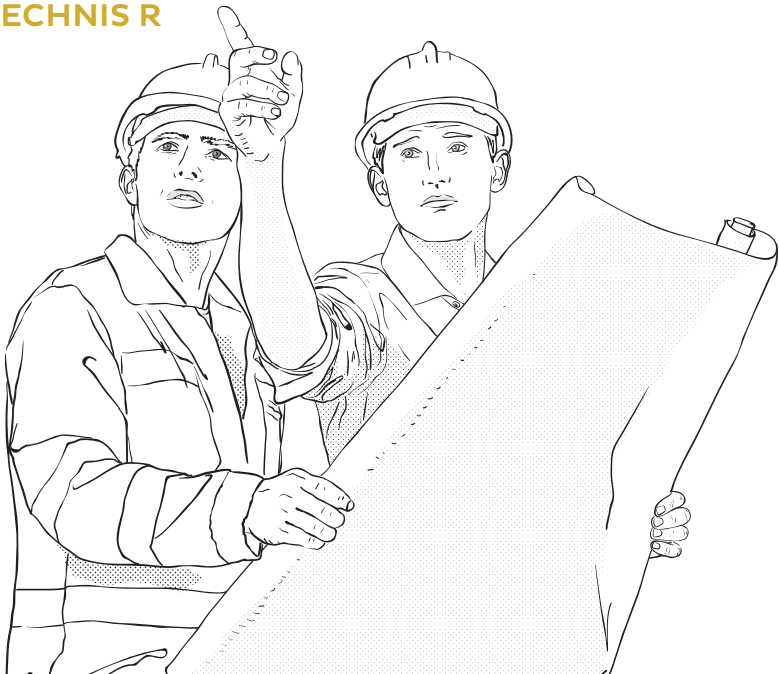




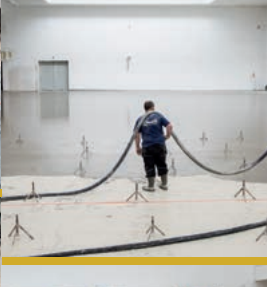
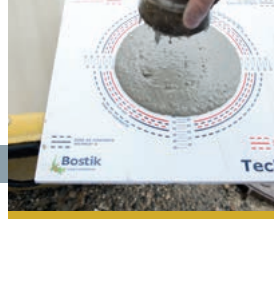
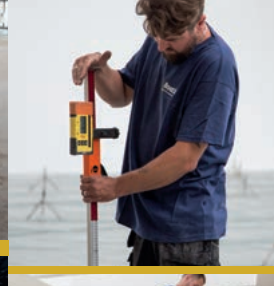
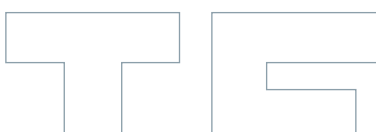
PORTRAIT OF
A BUILDING SITE

BOSTIK HAS
DEVELOPED
A UNIQUE
TECHNOLOGY
FOR SELF
LEVELLING
SCREED

TECHNIS R



TECHNIS



National Technical
Handball Center
France (94)

Project : Vinci
Company : Piazza (59)
Covering : Gerflor

YouTube
Bostik chape TECHNIS

Did you know?

TECHNIS is
Bostik's exclusive
screed technology,
which contains
a special binder

- All types of premises and subfloors
- 500m² in one go, with no joint
- Very fast drying: covered from 7 days
- No sanding
- No curing
- No framework
- Suitable on underfloor heating
- Perfect smooth finish

24
trucks

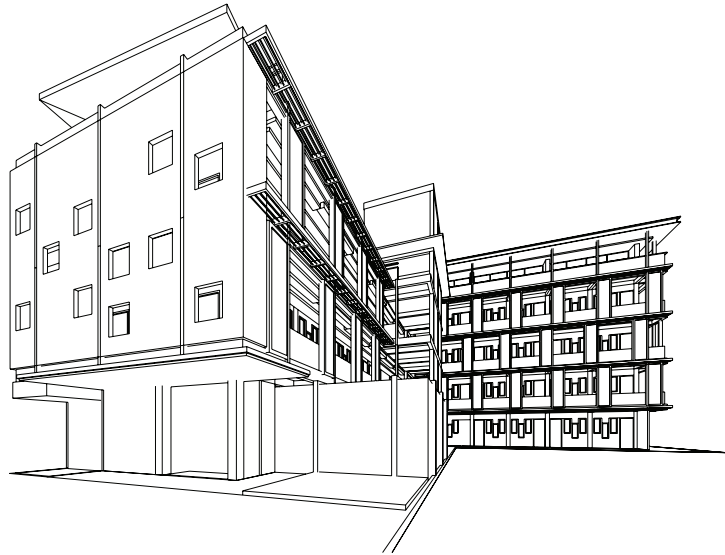
172m³
of screed

2 days

3,000m²
of self levelling screed

70mm
Thickness

#BostikProFloor FLOOR PREPARATION AND ADHESIVES:



BE WELL PREPARED!

Subfloor preparation is the first and paramount step to installing any floor covering. All subfloors should conform to the relevant code of practice, otherwise a failure could occur.

FIND THE WHOLE FAMILY:
PRIMERS
DPM
SMOOTHING COMPOUNDS
ADHESIVES



FOUNDATION OF THE FLOOR COVERING

STRONGER BONDS FOR LIFE! 5 REASONS WHY YOU NEED TO BOND YOUR FLOOR COVERINGS:

1

DURABILITY OF YOUR FLOORS

When floor coverings are bonded, they are much more durable and resistant to wear and tear from foot traffic, furniture and cleaning.



2

ACOUSTICS & COMFORT

Bonding provides a degree of sound dampening, both within the room and the one below. It can reduce sound propagation by several decibels.



5

AESTHETICS

Bonding the floor covering provides a much better visual appearance with a seamless finish.

4

HYGIENE

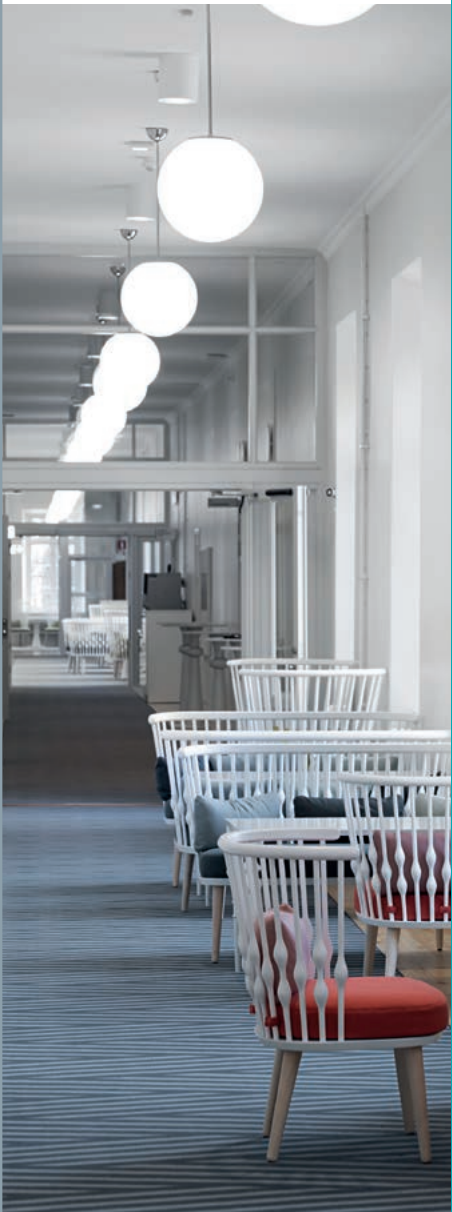
A floating installation leaves a gap between the subfloor and the covering. It becomes a nest for the dust and a refuge for bacteria and dust mites.



3

SAFETY

A bonded floor covering is less likely to rise up or crease, reducing the likelihood of an accidental trip or slip.



LVT
LAY, LOCK, LIVE!

THE INSTALLATION OF LVT IS STRAIGHTFORWARD FOR MOST PROFESSIONAL FITTERS, BUT THE END RESULT IS ONLY GOING TO BE AS GOOD AS THE PRODUCTS USED.

FIRST AND FOREMOST YOU NEED TO PREPARE THE SUBFLOOR

The key to installing resilient floor coverings accurately is to ensure that the substrate they are being laid onto is perfectly level and smooth. Any imperfections in the subfloor could show through the floor covering.

The application of a suitable Bostik smoothing compound is a key part of the LVT installation process and not one that should be taken lightly.

THEN THE BONDING!

For a sustainable installation and a perfect finish, LVT needs to be bonded with the appropriate adhesive. Temperature is very important when it comes to LVT installations – if laid in the cold, LVT products can not only be difficult to manipulate and shape but, once the area has warmed up, they will also try to expand and put tension on all welds, joints and edges. For this reason, it's crucial that you select the correct adhesive.

The adhesives used for the bonding of LVT must offer 3 main characteristics:

- Fast strength build-up
- Strong final bonding strength

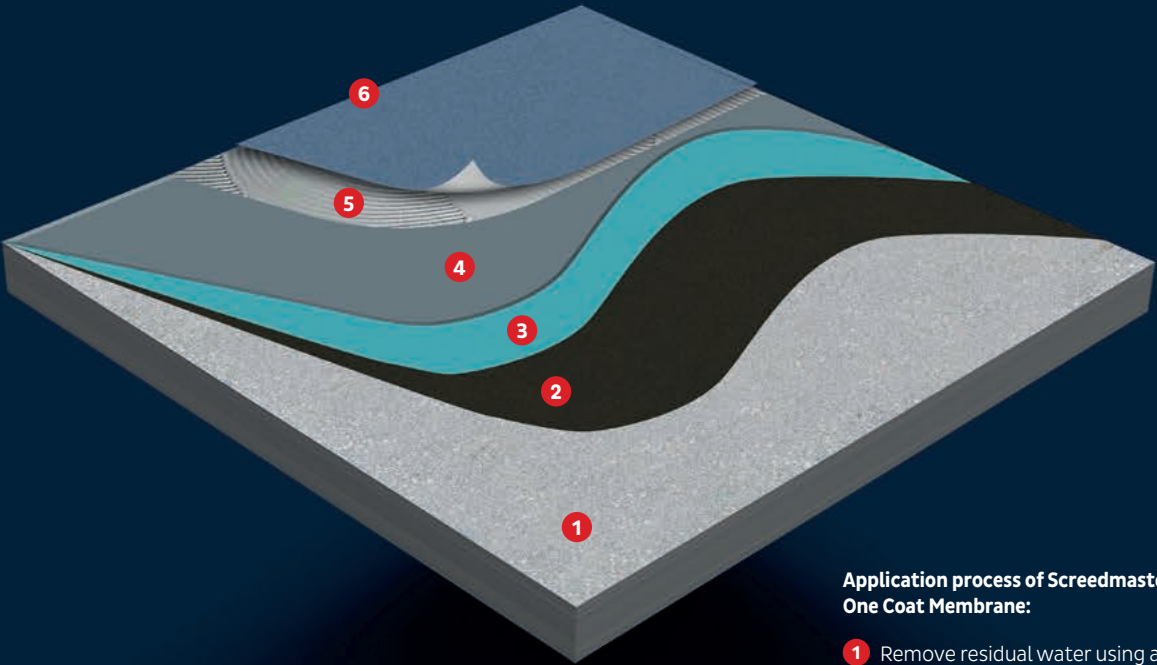


MANAGING MOISTURE
CONTROLLING SUBFLOOR MOISTURE
IN BUILDINGS.

- SYSTEM:
- SCREEDMASTER ONE COAT MEMBRANE
 - UNIVERSAL PRIMER

THE ROBUST SOLUTION

2K epoxy membrane + primer
Suitable for use where moisture readings reach 97% RH



Application process of Screedmaster One Coat Membrane:

- 1 Remove residual water using a squeegee
- 2 Apply Screedmaster One Coat Membrane using the appropriate notched trowel
- 3 Apply Universal Primer using a roller
- 4 Apply a Bostik smoothing compound to the subfloor
- 5 Apply the appropriate Bostik soft floor adhesive
- 6 Install your floor covering

2 MAIN CASES:

- Slab directly in contact with the ground and exposed to natural rising damp.
- New building with new screeds not yet completely dry (residual moisture).

SCREEDMASTER RAPID DPM

The other fast and easy solution for residual moisture. Ready for use, one part, water-based damp proof membrane. Developed to suppress residual construction moisture in cementitious subfloors.

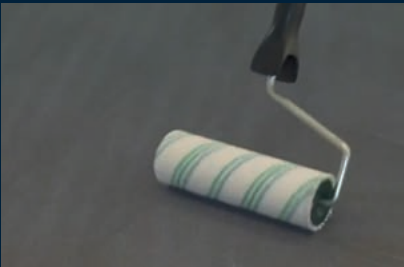


APPLICATION

Various subfloors:

- Concrete slab
- Cement screed
- Existing ceramic tiles
- Metal

Suitable for all premises



FLOOR PREPARATION



Find the right product for you
www.bostik-profloor.co.uk

the Hero



SCREEDMASTER ONE COAT MEMBRANE
TWO-PART SOLVENT-FREE EPOXY SURFACE MEMBRANE FOR USE UP TO 97% RH

High specification damp proof membrane for suppressing residual construction moisture in existing cementitious subfloors enabling floor coverings to be installed earlier in building projects. Screedmaster One Coat Membrane is suitable for controlling subfloor moisture in properties without a base DPM. For projects that require a faster curing time, it can be used in conjunction with Screedmaster One Coat Accelerator.

- SUITABLE FOR USE ON CEMENTITIOUS SUBFLOORS UP TO 97% RH
- SUITABLE FOR USE ON CALCIUM SULPHATE SCREEDS UP TO 87% RH (WITHOUT UFH)
- SOLVENT-FREE, SUITABLE FOR ALL AREAS OF PROJECT WORK

PRODUCT CHARACTERISTICS:

- Two-part product
- Solvent-free
- Drying time: 8 hours at +20°C, 16 hours at +10°C
- Coverage: up to 25m² per unit

10kg kit: 30811711
5kg kit: 30811700



BOSTIK SCREEDMASTER ONE COAT ACCELERATOR
FOR USE WITH BOSTIK SCREEDMASTER ONE COAT MEMBRANE

Bostik Screedmaster One Coat Accelerator is an additive to further accelerate the cure rate of Bostik Screedmaster One Coat Membrane. Specifically developed for the British contract flooring market, the use of the accelerator will not adversely affect the performance of Bostik Screedmaster One Coat Membrane.

- ADDITIVE ONLY
- CURES IN AS LITTLE AS 3 HOURS
- IDEAL FOR FAST TRACK INSTALLATIONS

PRODUCT CHARACTERISTICS:

- Low viscosity liquid curing agent
- Ready for over coating after approx. 3 hours (based on a +20°C minimum floor temperature)
- Use 1 unit of accelerator per unit of Bostik Screedmaster One Coat
- Use 2 units of accelerator per unit of Bostik Screedmaster One Coat

250ml: 30811705





BOSTIK SCREEDMASTER RAPID DPM
SINGLE PART SURFACE MEMBRANE TO PROTECT UP TO 95% RH

Ready to use, one part, water-based damp proof membrane developed to suppress residual construction moisture in cementitious subfloors.

- NO MIX - RESEAL AND REUSE
- NO PRIMING REQUIRED
- LOW VOC

PRODUCT CHARACTERISTICS:

- Single component
- Applied blue, dries black
- Drying time:
 - 1st coat: 15 to 30 minutes
 - 2nd coat: 1 hour
- Coverage: 2 coats up to 40m²

12kg: 30811761



BOSTIK UNIVERSAL PRIMER
A SINGLE COMPONENT, MULTI-PURPOSE, SOLVENT-FREE PRIMER AND BONDING AGENT

Versatile water-based primer/bonding agent for use prior to application of Bostik smoothing compounds. Quick drying to assist with fast track applications.

- BONDING AGENT FOR NON-POROUS SURFACES
- PRIMER FOR POROUS SURFACES
- EXCELLENT COVERAGE RATES

PRODUCT CHARACTERISTICS:

- Coloured to identify coated areas
- Drying time: 1 hour
- Coverage:
 - Undiluted 75m² to 100m²
 - Diluted 120m² to 150m²

5L: 30811756



BOSTIK SCREEDMASTER EPOXY PRIMER
A TWO COMPONENT, SOLVENT-FREE, WATER DISPERSIBLE PRIMER FOR USE PRIOR TO THE APPLICATION OF BOSTIK SMOOTHING COMPOUNDS

Primer/bonding agent for use on all smooth dense surfaces, power floated concrete, ceramic tiles, quarry tiles, terrazzo, rigid metal, asphalt and surface membranes. The primer produces a semi-gloss film finish as it dries. Screedmaster Epoxy Primer may be used as a barrier primer on calcium sulphate prior to the application of cementitious materials.

- SOLVENT-FREE
- EXCELLENT ADHESION
- IDEAL FOR USE WHEN APPLYING BOSTIK SMOOTHING COMPOUNDS ABOVE 10mm

PRODUCT CHARACTERISTICS:

- Two-part product
- Coloured to identify coated areas
- Drying time: 2 to 6 hours
- Coverage:
 - Smooth surfaces 50m² to 60m²
 - Calcium sulphate screed 100m² to 150m²

6kg: 30811706



BOSTIK GRIP A766 ECO+
MULTI-PURPOSE PRIMER FOR ABSORBENT SUBFLOORS

A concentrated primer for use on absorbent cementitious subfloors and as a barrier primer on dry calcium sulphate (anhydrite) screeds prior to application of cementitious materials.

- IDEAL FOR DRY CALCIUM SULPHATE SCREEDS
- A PRIMER FOR ALL ABSORBENT SURFACES
- CONCENTRATED

PRODUCT CHARACTERISTICS:

- Coloured to identify coated areas
- Drying time: Up to 4 hours
- Coverage: Up to 133m² per 10kg

10kg: 30615942



BOSTIK GRIP A936 XPRESS
HIGH-PERFORMANCE PRIMER FOR NON-ABSORBENT SUBFLOORS

A water-based primer and adhesion promoter for use on all internal, smooth, dense, and non-absorbent concrete surfaces, ceramic tiles, quarry tiles, terrazzo, rigid metal, asphalt and surface membranes.

- HIGH GRIP, CONTAINS QUARTZ
- FAST DRYING
- SOLVENT-FREE AND ODOURLESS

PRODUCT CHARACTERISTICS:

- Coloured to identify coated areas
- Drying time: Up to 2 hours
- Coverage: Up to 70m² per 7kg

7kg: 30615707





BOSTIK SCREEDMASTER ULTIMATE

MOISTURE TOLERANT
PROTEIN-FREE
SMOOTHING COMPOUND

A two-component, high performance smoothing compound which can be used when pre-smoothing a floor, prior to the application of an epoxy surface DPM. The product has excellent workability and flow characteristics.

- **MOISTURE TOLERANT**
- **PROTEIN-FREE AND LOW-ODOUR**
- **SUITABLE FOR USE OVER SOME ADHESIVE RESIDUES**

PRODUCT CHARACTERISTICS:

- Working time: 15 minutes
- Foot traffic: 1½ hours
- Loose lay floor coverings: 8 hours
- Bond floor coverings: 12 hours
- Non-absorbent subfloors: 24 hours
- Application thickness: 0mm to 10mm
- Coverage: 5m² per unit at 3mm thickness

20kg: 30607624
4.3L: 30607626

5m²
3mm

▼
0-10 mm
▲

C25
F7

1½ h



SCREEDMASTER FLOW

HIGH FLOW, EASY TROWELLING
SMOOTHING COMPOUND

Two-part smoothing compound with exceptional flow and smoothing properties. Ideal for use with thin vinyl and LVT floor coverings.

- **CAN BE USED OVER FIRMLY BONDED ADHESIVE RESIDUES**
- **EXCELLENT FLOW CHARACTERISTICS**
- **PROTEIN-FREE AND LOW-ODOUR**

PRODUCT CHARACTERISTICS:

- Working time: 20 minutes
- Foot traffic: 1½ hours
- Loose lay floor coverings: 8 hours
- Non-absorbent subfloors: 24 hours
- Application thickness: 0mm to 10mm
- Coverage: 5m² per unit at 3mm thickness

20kg: 30607625
4.17L: 30607627

5m²
3mm

▼
0-10 mm
▲

C25
F7

1½ h



BOSTIK SCREEDMASTER SPEED 30

RAPID SETTING SMOOTHING
COMPOUND FOR QUICK
TURNAROUND PROJECTS

Two-part smoothing compound that allows for full installations in one day.

- **VERY QUICK DRYING**
- **CAN BE USED AS PART OF A FAST TRACK SYSTEM**
- **IDEAL FOR REFURBISHMENT AND NEW BUILDS**

PRODUCT CHARACTERISTICS:

- Working time: 5 to 10 minutes
- Foot traffic: 30 minutes
- Loose lay floor coverings: 45 minutes
- Bond floor coverings: 3 hours
- Application thickness: 2mm to 20mm
- Coverage: 4 to 5m² per unit at 3mm thickness

20kg: 30608082
4L: 30608112

4-5m²
3mm

▼
2-20 mm
▲

C30
F7

30 mins



BOSTIK SCREEDMASTER FLEX

FIBRE-REINFORCED SMOOTHING
COMPOUND

Flexible smoothing compound reinforced with fibre, for use on sound, strong substrates where minimal vibration or lateral movement occurs.

- **FIBRE-REINFORCED FOR FLEXIBILITY**
- **RAPID SETTING**
- **CAN BE USED OVER SOUND, FIRMLY BONDED TIMBER FLOORING**

PRODUCT CHARACTERISTICS:

- Working time: 20 minutes
- Foot traffic: 4 hours
- Loose lay floor coverings: 8 hours
- Bond floor coverings: 12 hours
- Application thickness: 3mm to 30mm
- Coverage: 5.2m² per unit at 3mm thickness

25kg: 30814558

5.2m²
3mm

▼
3-30 mm
▲

C30
F7

4 h

5 L



BOSTIK SCREEDMASTER DEEP
A HIGH STRENGTH,
SMOOTHING AND RESURFACING
COMPOUND

A high strength compound that can be used to raise floor levels and smooth out uneven subfloors in light to heavy duty applications.

- QUICK DRYING
- HIGH STRENGTH
- PUMPABLE

PRODUCT CHARACTERISTICS:

- Working time: 20 minutes
- Foot traffic: 1½ hours
- Ceramic tiles/textile floor coverings: 3 to 4 hours
- Vinyl floor coverings: 24 hours per 10mm
- Application thickness: 5mm to 50mm
- Coverage: 2.7m² per unit at 5mm thickness

20kg: 30811795

2.7m²
5mm

▼
5-50 mm
▲

C35
F5

1½ h

3.5 L

**BOSTIK SCREEDMASTER
SMOOTH**
SINGLE PART, HIGH STRENGTH,
CEMENTITIOUS SMOOTHING
COMPOUND

Smoothing compound for use over most common substrates. Suitable for application by trowel and mortar screw pump.

- PUMPABLE
- HIGH STRENGTH
- PROTEIN-FREE AND LOW-ODOUR

PRODUCT CHARACTERISTICS:

- Working time: 20 minutes
- Foot traffic: 2 hours
- Ceramic tile/textile floor coverings: 12 hours
- Resilient floor coverings: 24 hours
- Application thickness: 1mm to 10mm
- Coverage: 5m² per unit at 3mm thickness

25kg: 30811794

5m²
3mm

▼
1-10 mm
▲

C30
F7

2 h

5 L

BOSTIK SL C320 ARDASOL
SMOOTHING COMPOUND FOR
USE ON INTERNAL FLOORS

Suitable for use in both new-build and refurbishment projects. Can be used in areas that are subject to moderate and high levels of foot traffic.

- PUMPABLE AND SELF-LEVELLING
- SUITABLE FOR DOMESTIC & LIGHT COMMERCIAL USE
- SMOOTH SURFACE FINISH

PRODUCT CHARACTERISTICS:

- Working time: 20 minutes
- Foot traffic: 4 to 6 hours
- Resilient floor coverings: 48 to 72 hours
- Wooden floor coverings: 72 hours
- Application thickness: 1mm to 10mm
- Coverage: 5m² per unit at 3mm thickness

25kg: 30615899

ECT
plus
very low emission

5m²
3mm

▼
1-10 mm
▲

C20
F6

4-6 h

6 L

BOSTIK SL C980 XPS
VERY HEAVY DUTY SMOOTHING
COMPOUND FOR USE ON
INTERNAL & EXTERNAL FLOORS

Suitable for use in both new build and renovation projects. Can be used in areas that are subject to heavy foot traffic, industrial premises and parking areas. Suitable for application by trowel and mortar screw pump.

- HIGH STRENGTH, ABRASION RESISTANT SMOOTHING COMPOUND
- SUITABLE FOR INDUSTRIAL PREMISES
- FINISHED WEARING SURFACE WHEN USED WITHOUT FLOOR COVERINGS

PRODUCT CHARACTERISTICS:

- Working time: 20 minutes
- Foot traffic: 1 hour
- Floor coverings: 4 hours
- Application thickness: 3mm to 15mm
- Coverage: 5m² per unit at 3mm thickness

25kg: 30615447

5m²
3mm

▼
3-15 mm
▲

C40
F7

1 h

4.5 L

SOFT FLOOR ADHESIVES

STIX

/ Adhesives for all kinds of soft floor coverings

FIX

/ Tackifiers

CONTACT

/ Contact adhesives

Find the right product for you
www.bostik-profleur.co.uk

the Hero

BOSTIKROLL REINFORCED DOUBLE-SIDED ADHESIVE TAPE

Bostik Roll is a high strength adhesive tape that is suitable for the fast installation of soft textile and resilient floor coverings, all types of skirting, capping strips, coving, stair treads and risers and other lightweight wall mounted accessories.

- SOLVENT-FREE ADHESIVE TAPE
- INSTANT GRAB
- CLEAN AND EASY INSTALLATION

PRODUCT CHARACTERISTICS:

- Drying time: ready for immediate use
- Open time: unlimited
- Foot traffic: ready for immediate use
- Curing time: ready for immediate use

25mm x 50m: 30607844
50mm x 50m: 30607845
85mm x 50m: 30607846
240mm x 25m: 30607857



RESILIENT ADHESIVES



STIX A300 MULTI FLOOR
MULTI-FUNCTIONAL
ACRYLIC ADHESIVE

Multi-functional adhesive for laying a wide variety of PVC floor coverings and some textile floor coverings.

- HIGH INITIAL TACK
- LONG OPEN TIME
- FOR PVC FLOOR COVERINGS

PRODUCT CHARACTERISTICS:

- Waiting time: 10 to 15 minutes
- Open time: 50 to 60 minutes
- Foot traffic: 12 hours
- Coverage: Up to 48m² per 12kg

12kg: 30615977



STIX A550 POWER ELASTIC
HIGH PERFORMANCE
HIGH TEMPERATURE ADHESIVE

Versatile adhesive for all resilient floor coverings, specially formulated to give high performance over a large temperature range.

- EXCEPTIONAL SHEAR STRENGTH
- SUITABLE FOR WIDE TEMPERATURE RANGES
- IDEAL FOR LVT

PRODUCT CHARACTERISTICS:

- Waiting time: 5 to 10 mins
- Open time: 25 to 30 mins
- Foot traffic: 24 hours
- Coverage: Up to 40m² per 13kg

13kg: 30615762



STIX A740 MULTI BEST
PREMIUM
ACRYLIC ADHESIVE

A multi-functional adhesive that is recommended for a wide range of floor coverings, including LVT. It offers extremely strong wet bonding whilst also giving a long open time, offering pressure sensitive characteristics.

- MULTI-FUNCTIONAL ADHESIVE
- WIDE OPEN TIME RANGE
- FOR RESILIENT FLOOR COVERINGS

PRODUCT CHARACTERISTICS:

- Waiting time: 10 to 15 mins
- Open time: 60 mins
- Foot traffic: 24 hours
- Coverage: Up to 46m² per 13kg

13kg: 30615765



STIX A800 PREMIUM
ULTRA HIGH PERFORMANCE
ACRYLIC ADHESIVE

High performance acrylic adhesive specially designed for use with LVT and rubber. With a high bond strength it is suitable for both floor and wall applications.

- HIGH INITIAL GRAB
- LONG WORKING TIME
- IDEAL FOR LVT AND RUBBER

PRODUCT CHARACTERISTICS:

- Waiting time: 5 to 15 mins
- Open time: Rubber: 30 mins / PVC: 60 mins
- Foot traffic: 12 hours
- Coverage: Up to 48m² per 12kg

12kg: 30616798



TEXTILE
FLOOR
COVERINGS

the
Hero



FIX A320 TACK
TACKIFIER ADHESIVE
FOR CARPET TILES

A solvent-free adhesive designed to provide a permanently tacky film when dry, facilitating the removal and replacement of carpet tiles without further adhesive application. Particularly well suited to office environments.

- EASY ROLL-ON APPLICATION
- IDEAL FOR OFFICE & COMMERCIAL APPLICATIONS
- EASY REMOVAL & REPLACEMENT OF CARPET TILES

PRODUCT CHARACTERISTICS:

- Waiting time: 30 to 45 mins
- Open time: Permanently tacky
- Foot traffic: Immediately
- Coverage: Up to 156m² per 15kg

5kg: 30616971
15kg: 30616700
25kg: 30616686



STIX A520 TEX POWER
HIGH TACK
SBR ADHESIVE

A specially formulated adhesive for bonding carpets. Ideal for bonding textile floor coverings over most commercial underlays, it can also be used over rigid PVC tiles provided they are clean and firmly bonded.

- EXCEPTIONAL GRAB WITH EARLY BOND STRENGTH BUILD UP
- SOLVENT-FREE
- FOR BONDING MOST CARPETS

PRODUCT CHARACTERISTICS:

- Waiting time: 0 to 10 mins
- Open time: 30 to 35 mins
- Foot traffic: 12 hours
- Coverage: Up to 42m² per 15kg

15kg: 30617215



SPECIALITY
ADHESIVES



CONTACT N320 MULTI
MULTI-FUNCTIONAL
SOLVENTED CONTACT ADHESIVE

A contact adhesive specially designed for the contract flooring industry. Recommended for bonding PVC, rubber and cork. It can also be used to bond coverings, capping strips and sheet and tile coverings to a variety of substrates.

- FLOORING GRADE
- INSTANT BOND AND HIGH SHEAR STRENGTH
- FOR PVC AND RUBBER NOSINGS AND SKIRTINGS

PRODUCT CHARACTERISTICS:

- Drying time: 30 mins
- Curing time: 24 to 48 hours
- Coverage: Up to 25m² per 5L

5L: 30617216



STIX P956 2K
TWO-PART
POLYURETHANE ADHESIVE

Adhesive for laying floor covering subjected to heavy use or high mechanical or thermal stress. For the bonding of PVC, rubber, linoleum, carpets, synthetic grass and sports flooring.

- VERY HIGH BONDING PERFORMANCE
- MOISTURE AND HEAT RESISTANT
- INTERNAL AND EXTERNAL USE

PRODUCT CHARACTERISTICS:

- Waiting time: None
- Open time: 1 hour
- Foot traffic: 24 hours
- Coverage: Up to 20m² per 6kg

6kg: 30615713



SOFT
FLOOR
ADHESIVES

WOOD FLOOR ADHESIVES

WOOD
/ Adhesives for all kinds of solid and engineered wood floors

Find the right product for you
www.bostik-proflood.co.uk



WOOD H180 CLASSIC-P
HYBRID WOOD ADHESIVE

Ideal for bonding most wood species, strip parquet and solid wood flooring up to 180mm wide. It can be bonded on to concrete, wood, metal, decking, ceramic tiles and anhydrite screed.

- STRONG ULTIMATE COHESION
- RAPID FIXING
- FOR BONDING SOLID WOOD FLOORS UP TO 180mm WIDE

PRODUCT CHARACTERISTICS:

- Open time: 40 mins
- Foot traffic: 24 hours
- Coverage: Up to 14m² per 14kg

14kg: 30616178



WOOD H200 ELASTIC
HIGH PERFORMANCE, HYBRID WOOD ADHESIVE

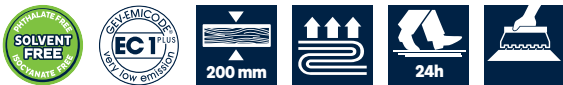
Ideal for the surface bonding of all types of wood flooring including: unfinished or varnished solid wood floors up to 200mm wide, bonded floors of all sizes, edge-grain wood, end-grain wood and all wood species, including beech and exotic woods.

- HIGH ADHESIVE STRENGTH
- REDUCES IMPACT OF SOUND
- FOR BONDING SOLID WOOD FLOORS UP TO 200mm WIDE

PRODUCT CHARACTERISTICS:

- Open time: 30 mins
- Foot traffic: 24 hours
- Coverage: Up to 23m² per 17kg

17kg: 30615783



ANCILLARY PRODUCTS



Find the right product for you
www.bostik-proflood.co.uk



EVO-STIK STICKS LIKE SH*T TURBO FAST SETTING GRAB ADHESIVE

Fast-setting, high performance adhesive that sets in just 15 minutes and can hold up to 300kg/m². The silane modified polymer formulation can be used on most building materials and is both weatherproof and water resistant. It can even be used to stick wet surfaces!

- **FAST SETTING**
- **RESISTS EXTREME TEMPERATURES AND MOVEMENT**
- **SUITABLE FOR STAIR NOSINGS**

PRODUCT CHARACTERISTICS:

- Drying time: Approx. 15 minutes, full bond strength will be achieved after 24 hours
- Coverage: 15 metres of 5mm diameter bead per C20 cartridge

30614238 - White



EVO-STIK MULTI-PURPOSE SILICONE HIGH QUALITY SEALANT

Suitable for interior and exterior use, it contains a fungicide to prevent mould and is ideal for bathroom and kitchen applications such as jointing between tiles and baths, basins, shower trays, kitchen worktops and stainless steel sink tops.

- **EXCELLENT ADHESION TO MOST SURFACES**
- **WATERPROOF AND MOULD RESISTANT**
- **DOES NOT CRACK, SHRINK OR DISCOLOUR**

PRODUCT CHARACTERISTICS:

- Approx. 10m² of a 6mm diameter bead of cartridge

30613354 - White
 30613355 - Clear
 30613753 - Brown
 30613752 - Black



EVO-STIK
GRIPFILL™
MULTI-PURPOSE
GAP FILLING ADHESIVE

Suitable for interior and exterior use (provided the bond is covered) and is specially formulated to bond a wide range of building materials including wood, plasterboard, tiles, stone, metal, breeze blocks, bricks, ceramic, concrete, UPVC and more. As a result of its gap filling qualities. As a result of its gap-filling qualities, it can be used on uneven surfaces.

- SUPERIOR FINAL BOND STRENGTH
- WILL BOND MOST BUILDING MATERIALS
- SUITABLE FOR INTERIOR AND EXTERIOR USE

PRODUCT CHARACTERISTICS:

- Coverage: 12 metres of 6mm bead per 350ml cartridge (normally sufficient for one 2,440mm x 1,220mm panel)

30812111 - Buff



EVO-STIK
GRIP FILTH WIPES
HAND & TOOL CLEANING WIPES

Tough on filth, gentle on hands. Designed to remove a range of building substances (including grime, grease, sealant, adhesive, tar, oil, grout, foam, expanding foam, paint, bitumen and many more) from hands, tools and surfaces.

- CAN BE USED TO CLEAN HANDS, TOOLS & SURFACES
- KEEPS HANDS FEELING CLEAN
- DERMATOLOGICALLY TESTED

PRODUCT CHARACTERISTICS:

- Odour: Orange/citrus fragrance
- P.H.: 5.3 to 7.5
- Contents: 100 wipes per tub

30608612



EVO-STIK
CARPET ADHESIVE
RAPID DRYING SPRAY ADHESIVE

A carpet adhesive that's applied direct from the can. It provides a strong, flexible bond for many applications where a conventional adhesive would be too difficult to apply. It will bond all types of foam backed carpets, underfelt, carpet tiles, fabrics, cork and felt to a variety of surfaces.

- EASY TO USE AND RAPID DRYING
- ADJUSTABLE SPRAY PATTERN
- BONDS CARPET TILES, FOAM BACKED CARPETS & UNDERLAY

PRODUCT CHARACTERISTICS:

- Drying time: The adhesive remains "wet" for 15 to 25 minutes. Check that floor coverings are bedded down securely after 2 hours
- Coverage: Approx. 3.5m² per can in a single coat

30812304 - 500ml



BOSTIK RAPID REPAIR MORTAR
RAPID CURING PATCHING
COMPOUND FOR FILLING
HOLES AND CRACKS

A rapid curing mortar used in vertical and horizontal applications for levelling steps, pedestals, holes & cracks and larger uneven areas of any thickness in screed, raw concrete floors and foundations. Suitable for use in interior applications only.

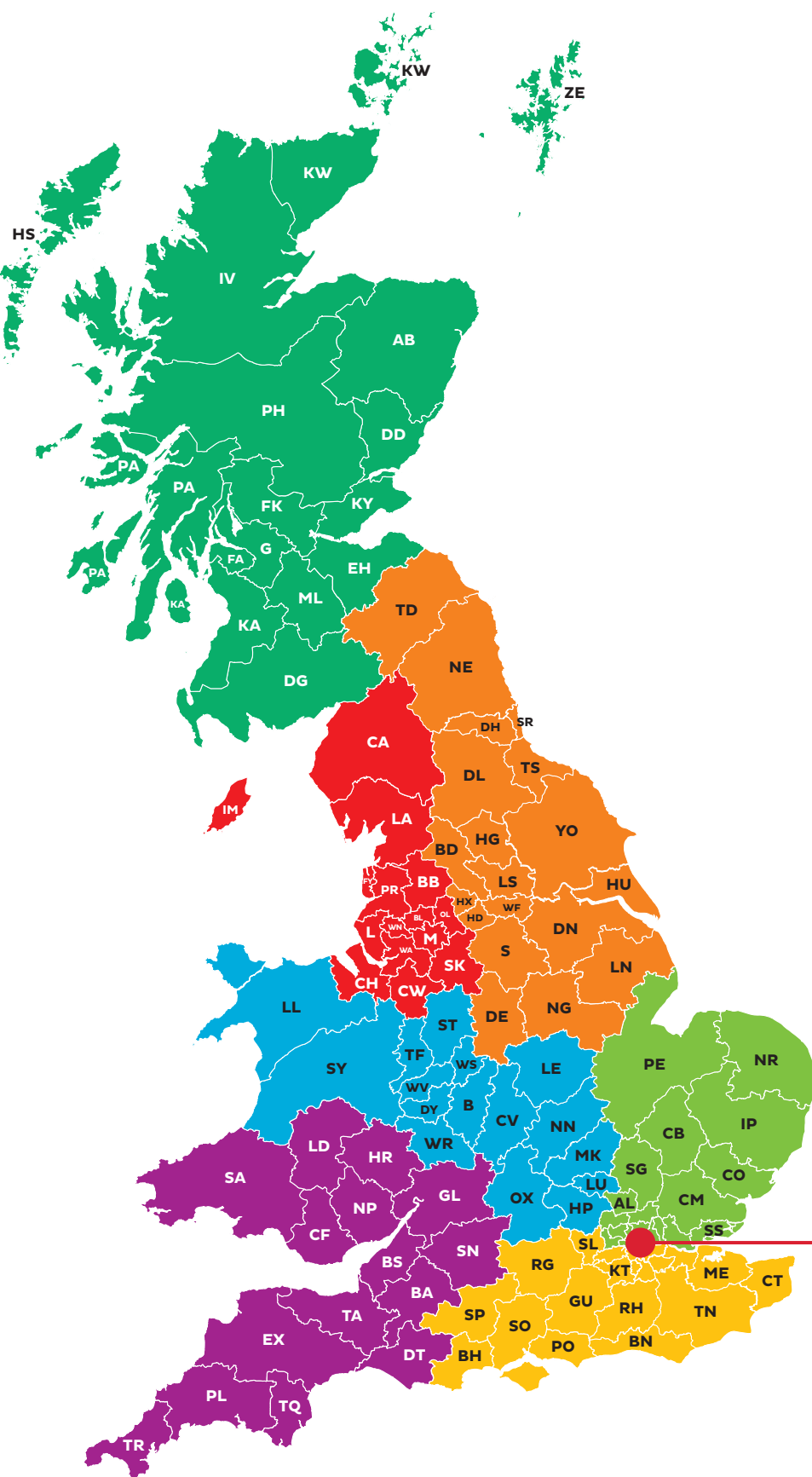
- QUICK CURING FOR EARLY TRAFFICKING
- NO MAXIMUM THICKNESS
- SAG RESISTANT AND PROTEIN-FREE

PRODUCT CHARACTERISTICS:

- Working time: 15 minutes at 20°C
- Foot traffic: Approx. 30 minutes (3mm thickness) at 20°C
- Floor coverings: Approx. 60 to 90 minutes (3mm thickness) at 20°C
- Coverage: Approx. 1.6kg of powder per 1m² at a 1mm thickness

30811790 - 5kg





John Fagan:
07740 278622
john.fagan@bostik.com

Jake Hodder:
07891 552796
jake.hodder@bostik.com

Milo Watson:
07767 273502
milo.watson@bostik.com

Noel Ryan:
07703 503244
noel.ryan@bostik.com

Marc Rees:
07740 278613
marc.rees@bostik.com

Kane Piper:
07970 450622
kane.piper@bostik.com

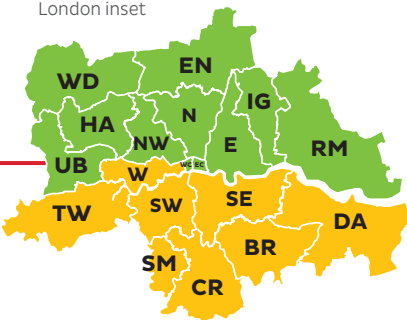
Philip Godley:
07805 812626
philip.godley@bostik.com

Technical Service Manager
Martin Cummins:
07740 278652
martin.cummins@bostik.com

Technical Service Consultant North
Adam Jones:
07969 388771
adam.jones@bostik.com

Technical Service Consultant South
James Rosher:
07814 973115
james.roscher@bostik.com

London inset



OUR TEAM
IS YOUR TEAM



For any application not covered, please contact Technical Services on +44 (0)1785 272625 or visit www.bostik.com/uk for advice.

Refer to product data and safety data sheets for full instructions and precautions in use.

Recommendations and suggestions are for guidance only, since conditions of use are completely beyond our control.

Bostik Ltd.,
Common Road,
Stafford,
ST16 3EH, U.K.
Tel: +44 (0) 1785 272625
www.bostik.com/uk

Bostik Industries Ltd.,
Newtown,
Swords,
Co. Dublin, Ireland
Tel: +353 1 8624900
www.bostik.com/ireland

#BostikProFloor

Photo credits: Bostik – Tarkett – Objectfloor – Gerflor
– Balsan – Ege – Shutterstock® – Getty Images®