



1020 FLOW

TECHNICAL DATASHEET

Version: 2019-11-13

PRODUCT DESCRIPTION

A cement-based, self-levelling, waterproof and pumpable floor screed designed for the smoothing of concrete substrates. Normally provides a finished surface without the need for subsequent treatment. Recommended application thickness is 6-30 mm. The product does not contain casein.

AREA OF USAGE

Designed for the smoothing of concrete substrates. The product is designed as an underlayment for carpet, linoleum, PVC, parquet, clinker or similar materials in homes, offices, hospitals, schools, nurseries, etc. Please contact Bostik AB for questions regarding application on other substrates.

WORKING INSTRUCTION

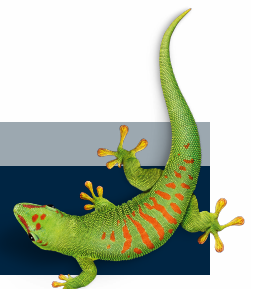
Substrate: Make sure that the substrate is free from dust, dirt, oil, grease, wax, etc. and that it is solid and hard, without soft concrete, cracks on the surface or the like. Any sludge layer should be ground or milled away. The substrate must maintain at least +10°C. **Priming:** For improved adhesion and to prevent quick drying-out, the substrate should always be pre-treated with Bostik Primer 6000. The primer is applied to a normally absorbent substrate, diluted with water in the ratio 1:3. 2 treatments are recommended on more absorbent substrates. **Mixing:** Add 5.0 litres of water to 25 kg powder. The mixture is stirred with a whisk-fitted drill until a lump-free and easy-flowing consistency is achieved. Wait 2-3 minutes and then re-stir the mixture. Use water +5 to +20°C. Do not use hot water, as this could result in quick drying-out and the formation of cracks. The temperature of the compound should be between +10 to +20°C. **Application:** The compound is pumped or poured onto the substrate and then flows together by itself to form a smooth and flat surface. It may be necessary to help the compound into e.g. corner spaces, and in the case of very uneven surfaces it could help to aid the distribution of the compound with a toothed trowel. Once mixed the compound should be applied within 20 minutes. This time is, however, only a guideline and is dependent on factors like application thickness, temperature and the humidity and absorbent capacity of the substrate. When applying 2 layers, priming should be carried out between the layers, which should be kept completely dry. PLEASE NOTE! With sun exposure, high temperature, strong ventilation or other factors that can accelerate the drying process, the surface should be protected against drying too quickly.

SAFETY

The product contains cement and is an irritant to skin. For additional information, please refer to the product's safety data sheet. OTHER: Due to the manufacturing process it cannot be ruled out that residues of reinforcing fibre may exist in the product. This is, however, of nothing but benefit to the quality of the product

CONTACT US

TEL +46 (0)42-19 50 00
info.se@bostik.com



TECHNICAL DATA

Adhesive	Special Cement
Aggregate	Natural sand, max. 0.5 mm
Application thickness	6-30 mm
Application time	20 min
Walk on time	after approx. 3-5 hours if the temperature during the drying period is min. +18°C.
Coverable after	Allow 1 day per mm of application thickness or when RH (relative humidity) is below the permitted level for the floor covering in question.
Consumption	1.65 kg per m ² and mm (according to GBR).
Packaging size	25 kg bag
Compressive strength	C25
Flexural strength	F6
Adhesion strength	> 1.5 MPa
Shrinkage	< 0,5
Cleaning of tools	Immediately with water
Shelf life	6 months in a dry and cool location in unopened packaging
Flowability	145 - 155 mm (SS 923519 (50x22 mm))
Surface tensile strength	> 1.5 MPa
Resistance to rolling chair wheels (GBR std.)	RWFC 450N
pH in dried-out material	Lower than 11
Fire classification	A1fl (EN 13501-1)
Surface tensile strength	>1.5 MPa
Fire classification	A1fl (EN 1350-1)

CONTACT US

TEL +46 (0)42-19 50 00

info.se@bostik.com

