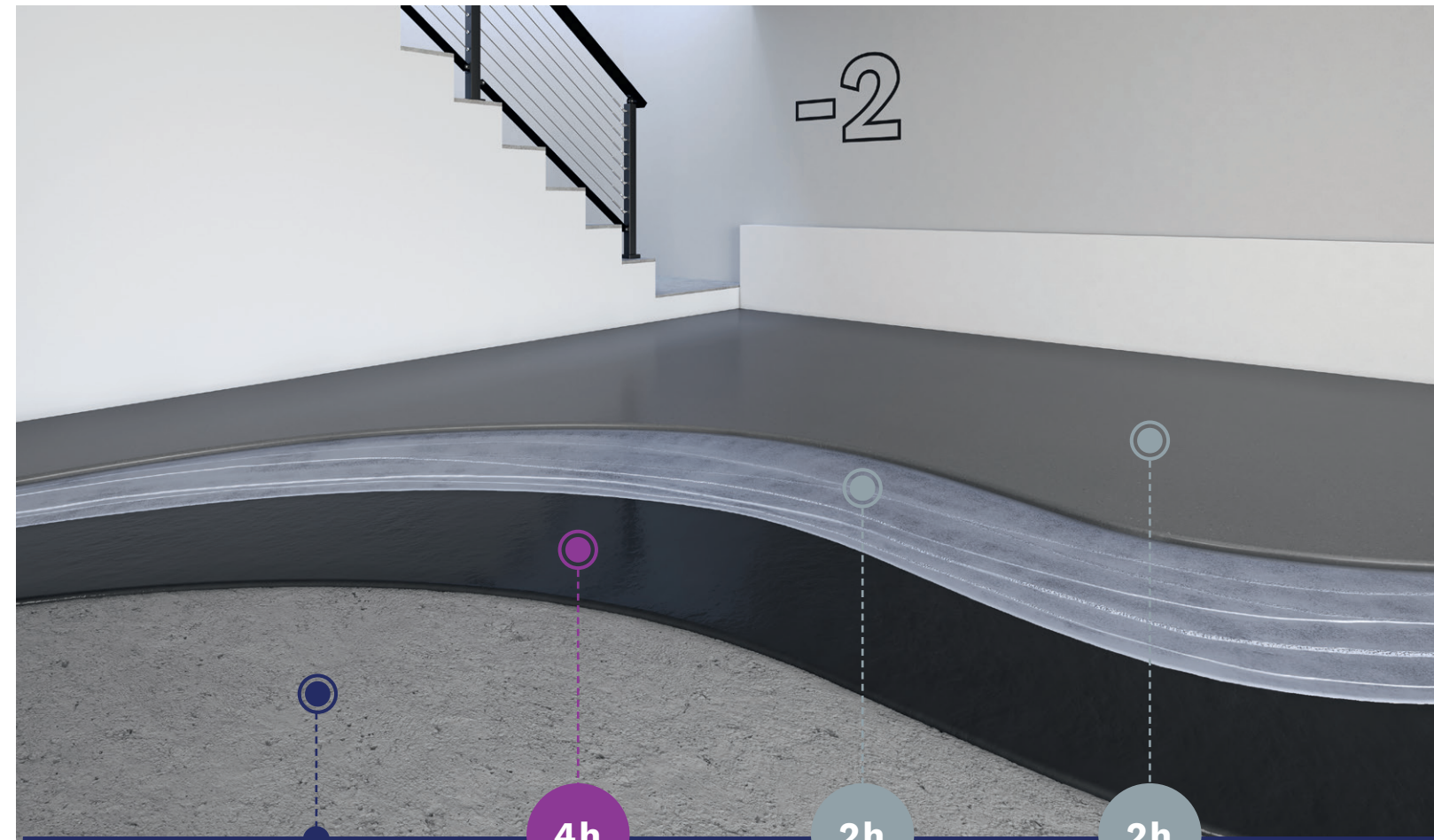


DAILY FULL SYSTEM

Bostik offers a **high performance system** with **HYTEC E736 TURBO** moisture barrier and the associated **GRIP A936 XPRESS** fast drying sanded primer. For a perfect finish, **SL C980 XPS** has **high mechanical resistance** and can be used as a **final floor covering**.



CONCRETE FLOOR

4h



**HYTEC E736
TURBO**

2h



**GRIP A936
XPRESS**

2h



**SL C980
XPS**



HYTEC E736 TURBO

ULTRA FAST CURING
DAMP PROOF MEMBRANE



Bostik S.A.
420 Rue d'Estienne d'Orves
92700 COLOMBES - FRANCE
PHONE: +33 (1) 49 00 90 00

www.bostik.com

Adhesive solutions by **ARKEMA**



THE MOST EFFICIENT SYSTEM ON THE MARKET!

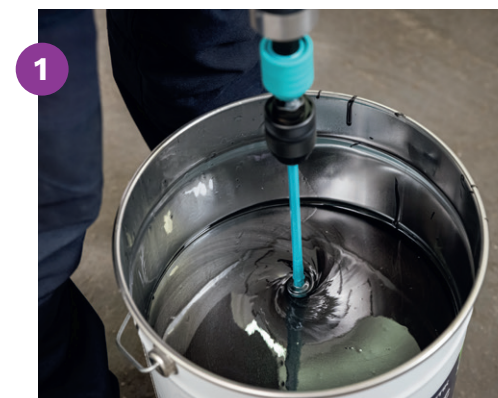
ULTRA-RAPID DAMP PROOF MEMBRANE

SUPPRESSES RESIDUAL MOISTURE AND BLOCK RISING DAMP

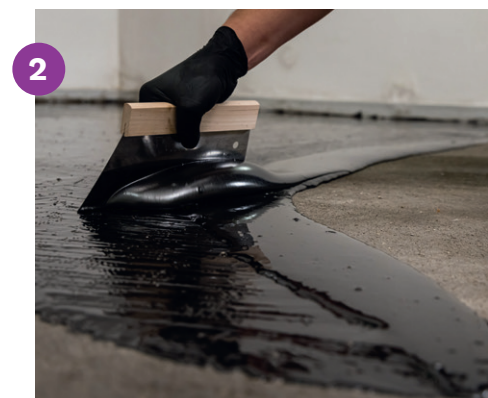
MOISTURE LEVEL: NO LIMIT

APPLY IN 1 COAT: 500-600 g/m²

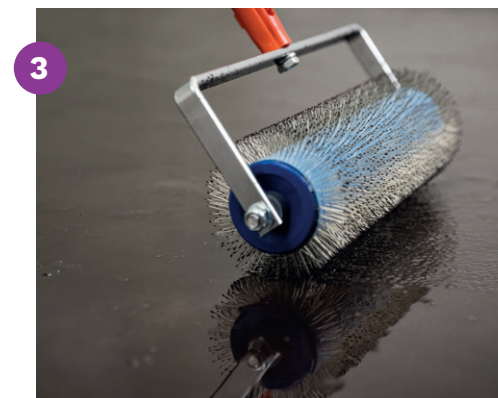
RAPID CURING: 4H



1 Pour all the resin into the hardener and mix thoroughly until a homogeneous mixture is obtained.



2 Apply the two-component epoxy resin with a spatula TKB-B2 (500-600g/m²).



3 After application use a spiked roller over the entire surface to avoid any risk of air bubbles. Allow to dry for approximately 4h at 20°C.



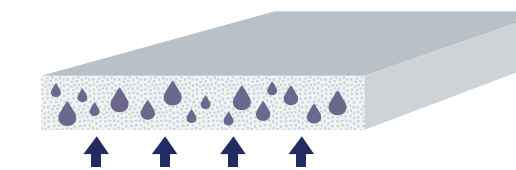
4 Apply GRIP A936 XPRESS primer with a short hair roller (100-120 g/m²). Allow a drying time of 2 hours before applying the self-levelling compound.

HYTEC E736 TURBO forms a barrier against the risk of rising damp or residual moisture in the subfloor.

POSSIBLE CASES:

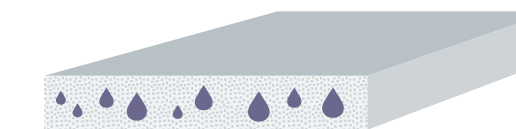
1/ RISING DAMP

- APPLY WITH A SPATULA TKB-B2
- COVERAGE : 500-600 g/m²



2/ RESIDUAL MOISTURE

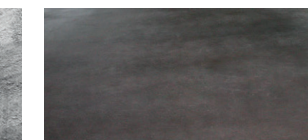
- APPLY WITH A SPATULA TKB-B1
- COVERAGE : 300-400 g/m²



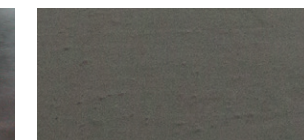
/ APPROVED SUBFLOORS



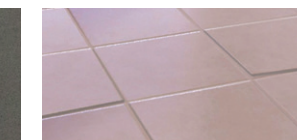
RAW CONCRETE



HELICOPTER SURFACED CONCRETE



CEMENT SCREED



TILING

	CODE	GENCOD	PACKAGING	PALLET
HYTEC E736 TURBO	30623837	3549212491314	Kit 6 kg	50
	30623389	3549212490867	Kit 18 kg	16

