



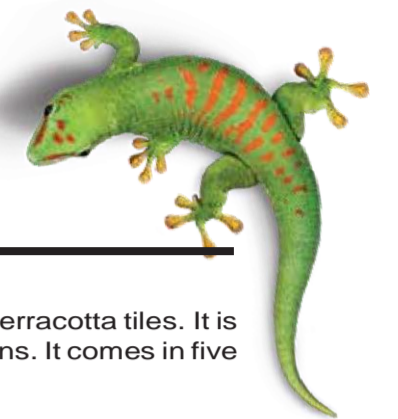
Sanded Grout

Can handle life in the fast lane

Shock-absorbent sanded grout for driveways



Sanded Grout



PRODUCT DESCRIPTION

Sanded Grout is a cement based grout used for grouting slate, quarry and treated terracotta tiles. It is especially useful where wider joints are required. It is suitable for external installations. It comes in five colours.



FEATURES & BENEFITS

- Suitable for grout joints from 5 mm to 20 mm wide
- Easy to clean
- Low shrinkage
- High strength
- Available in 5 colours

RECOMMENDED FOR

- External applications
- Wide joints
- Treated terracotta tiles
- Quarry tiles
- Slate

SURFACE PREPARATION

The grout joints should be thoroughly cleaned and dry to expose an even surface. The joints should be at least 5mm wide. If regrouting, grout depth should be half the width of the joint to a minimum of 5mm. It may be necessary to remove excess adhesive from the joints. When grouting porous or unsealed tiles, dampen tiles and joints with clean water before grouting.

MIXING

250 ml of potable water (or 1:1 Megalastic and water) are required per 1 kg grout (1 litre per 4 kg). Add liquid to a suitable, clean container. Mix powder into liquid with mechanical stirring, until you get the consistency of toothpaste. Allow the mix to stand for 2 minutes before using. Use Megalastic as a 50% water replacement if improved water resistance or flexibility is required. Always add the powder to the water. When mixing large amounts use a drill with suitable mixing paddle designed for the task.

APPLICATION

1. Apply the mixed grout with a rubber squeegee (or other suitable grouting tool). Work well into the joints.
2. Allow the grout to become firm in the joint. Avoid washing it off too early as the grout will not have enough strength to resist pulling out of the joint. The grout is ready to be washed off only when the grout in the mixing bucket is stiff.
3. Wash off excess grout from the face of the tiles with a damp (not wet) sponge when the grout joint has firmed.
4. Remove grout haze from the face of the tile by polishing it off with a soft cloth after the joints are dry.

COVERAGE

2 kg of grout will cover approximately 1 m² for 10 mm joints. Refer the coverage chart for more details. Grout coverage will vary depending on joint variations, installation conditions and technique. Always allow 10 – 15% extra to account for wastage.

PERFORMANCE PROPERTIES

Appearance	Cementitious powder Various colours
Bulk density	1.65 - 1.75 g/cc
Mix density	1.9 - 2.0 g/cc
Mixing ratio	3:1 by volume
Pot life	2 Hrs at 25°C and 50% RH
Setting time	24 Hours at 25°C and 50%RH
Compressive strength	30.9 N/mm ²

ABOUT BOSTIK : Bostik is a leading global adhesive specialist in construction, industrial manufacturing, and consumer markets. We create innovative adhesives that make your world safer, efficient, flexible, and responsive to the dynamic challenges of daily life.

Disclaimer

The information and recommendations relating to the application and end-use of the product are given in good faith and based on tests which we believe to be reliable. However, no warranty in respect of merchantability or of fitness for a particular purpose, nor any liability arising out of any legal relationship, whatsoever, can be inferred either from this information, or from any written recommendations, or from any other advice offered. No guarantee of their accuracy can be made because of the great range of field conditions and variations encountered in raw materials, manufacturing equipment and methods. Thus, the products are sold with limited warranty only, and on condition that purchasers will make their own tests to determine the suitability of the product for their particular purposes.

Bostik India Private Limited

124/1 & 124/2A, Kachanayakanahalli, Off Hosur Road, Bommasandra Post, Anekal Taluk, Bangalore - 560099

An Arkema Company

www.bostik.com

BOSTIK HOTLINE

Smart help +91 080 68297700