



# BOSCOLASTIC

## ELASTOMERIC CEMENTITIOUS WATERPROOFING MEMBRANE

### KEY FEATURES

- Flexible and elastic, can bridge over cracks.
- Accommodates flexible movements in suspended structures.
- Can be tiled over successfully.
- Bonds well to sound substrates.
- Ability to withstand heavy topping without fracture.
- Applied on damp walls and floors.
- Can be painted over with elastic paint.
- Hard and abrasion resistant.

### DESCRIPTION

Boscolastic is a two-component elastomeric acrylic polymer cementitious waterproofing coating that is mixed on site and resurfaced on concrete and other construction materials to waterproof. Boscolastic has excellent weathering resistance and crack bridging property.

### RECOMMENDED USES

- Water Tanks
- Bathrooms, Balconies, Terraces
- Swimming pools, Pool decks
- Water Features and Ponds
- Planter Boxes, Canopies
- On external environmental deck
- In between of under floor toppings
- Salt water immersion

### SUBSTRATE PREPARATION

All substrates shall be sound, clean and free of dust, excess mortar, oil or other loose particles. Cracks, honeycombs and other defects must be repaired using suitable cement mortar.

For excessively dry substrate, dampen the substrate and keep it continuously moist for 1 to 2 hours before application. Remove all excess water or standing water and allow the surface to become almost dry to provide an SSD (Saturated Surface Dry) condition before applying the waterproofing coating.

### APPLICATION INSTRUCTION

### PERFORMANCE PROPERTIES

Typical properties conducted at 23°C and 50% RH

Form	Part A - White Milky Liquid Part B - Grey Powder
Binder	Cement
Extender	Selected Fine Silica
Resin	Acrylic Polymer
Tensile Strength	≥ 1.5N/mm <sup>2</sup>
Adhesion to concrete	about 1N/mm <sup>2</sup>
Elongation at break	≥ 150%
Crack Bridging	approx. 2mm
Hardness Shore A	about 55
Resistance to water penetration at 0.2 kgf/cm <sup>2</sup> for 6 hours	No penetration
Toxicity	Non toxic
Pot Life	30 minutes to 1 hour
Set to touch (at 20°C)	Within 2 hours
Final set (at 20°C)	72 hours

### PRIMING

For excessively dry and porous substrate, prime the entire surface with Bostik Hydroment 425 prior application of the waterproofing coating with the rate of 5m<sup>2</sup> per liter depending of the substrate condition.

### MIXING

Put the liquid component in a clean mixing container, and slowly add the powder component whilst stirring using a slow speed (500 - 600 r.p.m.) heavy-duty electric drill with a suitable paddle. Mix until homogeneous slurry is obtained and make sure that no unmixed powder is left at the bottom of the container. Small amount may be hand-mixed separately.

### PLACING

The mixed Boscolastic can be applied onto the prepared substrate using a bristle brush or block brush. Place the material well onto the substrate to achieve full bond.

The application of Boscolastic waterproofing coating shall be done in minimum of two (2) layers, the first layer in one direction and the second layer in a direction perpendicular to the first layer. Apply the subsequent

layers after 3-6 hours curing of the previous coat.

### RECOMMENDED COVERAGE

Bathrooms, Balconies :

2kg/m<sup>2</sup>, 2 layers at 1.0kg/m<sup>2</sup>/layer

Hydrostatic pressure areas, water tanks, swimming pools :

3kg/m<sup>2</sup>, 3 layers at 1.0kg/m<sup>2</sup>/layer

Note : For the whole system required, layer or number of coating is only for reference, and subject to substrate condition. Therefore to achieve accuracy and reliable results, it should follow the consumption usage as per recommendation.

### CURING

The finished Boscolastic must be protected from rapid drying. Curing shall be at least 36 hours before trafficking, to yield optimum strength.

### PACKAGING

Boscolastic is available in two packing.  
35 kgs/set and 43kg/set.

35 kgs/set - Part A : liquid 15 kgs, Part B : powder, 20 kgs.

43 kgs/set - Part A : liquid 18 kgs, Part B : powder, 25 kgs.

### CLEAN UP

All tools, equipments and surrounding areas can be cleaned with clean water before the product sets.

Hardened material has to be mechanically removed.

### STORAGE AND SHELF LIFE

Boscolastic has a shelf life of at least 12 months. Store all materials in a cool dry place, in an elevated condition.

The information and recommendations relating to the application and end-use of the product are given in good faith and based on tests which we believe to be reliable. Differing materials, substrates, environments, site conditions, and product storage, handling and application may affect results. However, no warranty in respect of merchantability or fitness for a particular purpose, nor any liability arising out of any legal relationship, whatsoever, can be inferred either from this information, or from any written recommendations, or from any other advise offered. No guarantee of their accuracy can be made because of the great range of field conditions and variation encountered in raw materials, manufacturing equipment and methods. Thus, the products are sold with limited warranty only, and on condition that purchasers will make their own tests to determine the suitability of the product for their particular purposes. Under no circumstances will Bostik be liable to anyone except for replacement of the products or refund of the purchase price.

### HEALTH AND SAFETY

Suitable protection clothing, dust masks, gloves and eye protection should be worn. Continual or extended contact with cement products can cause skin irritation. If skin irritation occurs, flush skin with water for a minimum of 15 minutes. If irritation still persist, consult medical advises.

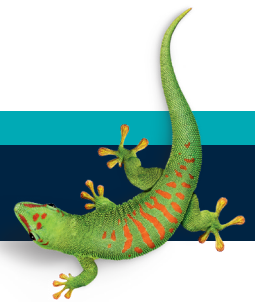


**032-091-1381**

Environmentally Preferred Coating

### BOSTIK HOTLINE

**Smart help**  
**+606 678 9788**



**Bostik Findley (Malaysia) Sdn. Bhd.** 1994010000474 (286152-V)

Lot 112 & 113, Kawasan Perindustrian Senawang,  
70450 Seremban, Negeri Sembilan,  
Malaysia

Tel : +606 678 9788 Fax : +606 678 9766

**www.bostik.com**  
**an Arkema company**

This document supersedes all previously published literature.