



BOSCOSEALAR

ANTI-ROOT WATER-BORNE LIQUID APPLIED WATERPROOFING MEMBRANE

KEY FEATURES

- Protect construction materials from undesirable root penetration
- No damage to plants and yet providing long term protection
- Remains effective under harsh pressure
- Heat resistance
- Low vapour pressure
- Economical
- Seamless and easy application

DESCRIPTION

The environmental friendly one-part liquid applied BoscosealAR is a water-borne product which is effective in CONSTRANNING root growth. It works in areas where root traps and deflectors do not. Its colour is brownish black and dries to a tough flexible dark black coating.

PERFORMANCE

A major concern in root growth control is barrier placement where the long term health of the plant needs to be looked into. The soil resource volume is equally critical too.

The placement of barriers should fulfill the objectives of minimising the damages caused by roots and maximising the soil area open for the plants. Barriers should be installed along or around the infrastructure that to be protected.

RECOMMENDED USES

- When applied to specified thickness, BoscosealAR is an effective root inhibitor.
- Can be added directly to cement for the purpose of constructing structures such as planter box.
- It will slow down and ultimately stops the length growth of the roots.
- The influence of BoscosealAR on the root growth is localised.
- Root sprouts in the immediate area which have no contact with the Boscoseal AR remain healthy and unaffected.
- Combined features of the barrier, the site, barrier installation and maintenance are critical to effectiveness of BoscosealAR.

PERFORMANCE PROPERTIES

Colour	Brownish black
Water Penetration	Zero, No water penetration
Tensile Strength	Minimum 5N/mm ² (with glassfibre netting)
Heat Resistance	No sagging, blistering or slipping
Water Resistance	No dispersion, blistering or re-emulsification
Fire Resistance	No combustion or rundown, coating charred in place
Elongation	550% without netting
Crack Bridging	1 to 2mm
Adhesion Strength with primer	0.4N/mm ²

Test method complies with EN13948

* Actual coverage may vary subject to substrate condition.

SUBSTRATE PREPARATION

All substrates shall be sound, clean and free of dust, excess mortar, oil, loose particles laitance and other contamination. All defects must be properly repaired with appropriate material.

APPLICATION INSTRUCTION

PRIMING

For excessively dry and porous substrate, prime the entire surface with Bostik Hydroment 425 prior application of the waterproofing coating with the rate of 5m² per liter depending of the substrate condition.

PLACING

Boscoseal AR can be applied by roller, trowel, squeegee or spray directly to the substrate. Allow first coat to dry before applying the second coat. To achieve optimum waterproofing properties, dry film thickness of 1mm with a minimum of three coats BoscosealAR is required.

RECOMMENDED COVERAGE

0.60 to 0.80 kg per m² x 3 coats

Note : For the whole system required, layer or number of coating is only for reference, and subject to substrate condition. Therefore to achieve accuracy and reliable results, it should follow the consumption usage as per recommendation.

CURING

Dry to touch / re-coat time - 1½ hour
Cure - 24 hours

PACKAGING

Bosco seal AR is packed in 20 kg pail.

CLEAN UP

Clean tools or equipment with toluene before materials cure and harden.

STORAGE AND SHELF LIFE

Store in a cool dry place, in an elevated condition. The shelf life of Bosco seal AR is 12 months in unopened condition.

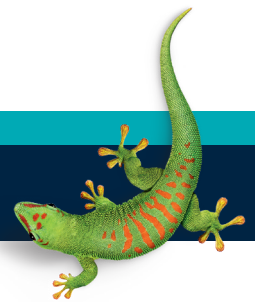
HEALTH AND SAFETY

On contact, uncured membrane causes irritation. Gloves and protective goggles must be worn during stirring, application, and use. Avoid contact with skin, eyes and avoid breathing in vapour. If poisoning occurs, contact a doctor or Poisons Information Centre. If swallowed, do not induce vomiting. Give a glass of water. If skin contact occurs, remove contaminated clothing and wash skin thoroughly for a minimum of 15 minutes and see a doctor. For more detailed information, refer to Material Safety Data Sheet.

The information and recommendations relating to the application and end-use of the product are given in good faith and based on tests which we believe to be reliable. Differing materials, substrates, environments, site conditions, and product storage, handling and application may affect results. However, no warranty in respect of merchantability or fitness for a particular purpose, nor any liability arising out of any legal relationship, whatsoever, can be inferred either from this information, or from any written recommendations, or from any other advice offered. No guarantee of their accuracy can be made because of the great range of field conditions and variation encountered in raw materials, manufacturing equipment and methods. Thus, the products are sold with limited warranty only, and on condition that purchasers will make their own tests to determine the suitability of the product for their particular purposes. Under no circumstances will Bostik be liable to anyone except for replacement of the products or refund of the purchase price.

BOSTIK HOTLINE

Smart help
+606 678 9788



Bostik Findley (Malaysia) Sdn. Bhd. 1994010000474 (286152-V)

Lot 112 & 113, Kawasan Perindustrian Senawang,
70450 Seremban, Negeri Sembilan,
Malaysia

Tel: +606 678 9788 Fax: +606 678 9766

www.bostik.com
an Arkema company

This document supersedes all previously published literature.