

BOSCOSEAL ADMIX

WATERPROOFING BY CRYSTALLISATION

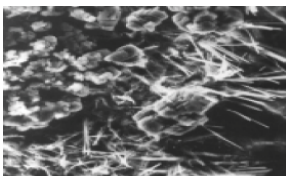
KEY FEATURES

- Maximizes waterproofing within concrete.
- Withstand extreme hydrostatic pressure > 7 bar
- Exceptional durability -20°C to 50 °C.
- Reduces shrinkage and cracking.
- Protection of concrete against certain aggressive chemicals including chloride attack to steel reinforcing.
- Sealing static cracks up to 0.4mm.
- Complies with SS 375 : 2001 - Potable water.

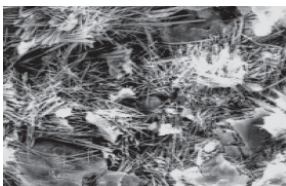
DESCRIPTION

Boscoseal Admix is use for treating the concrete to create protection and waterproofing in it. This admixture is a concrete additive designed to be added at the time of batching and by doing so catalytic crystalline growth are being form within the concrete making it waterproof.

Crystal growth in Pores & Capillary tracts of concrete shown through electron microscope.



Crystal growth in concrete after application of crystal forming waterproofer.



Fully developed crystal growth at 28 days within the capillary tracts of concrete blocking flow of water.

RECOMMENDED USES

- Water tanks and Reservoirs
- Water retaining structures
- Basements
- Marine application

PERFORMANCE PROPERTIES

Chloride Permeability	< 525
Water Permeability	7.25×10^{-13}
Water Penetration (DIN 1048.5)	< 20mm
Shinkage (AS 1012-13) - 28 days	< 600 Microstrains
Suitable PH range	3.0 (acid) - 11.0 (Alkaline)

APPLICATION GUIDELINES

For waterproofing concrete the recommended addition rate for Boscoseal Admix is 0.8% to 1.2% by weight of cement. For enhanced chemical resistance, please consult Bostik to determine the approximate addition rate. Boscoseal Admix is added to the concrete at the time of batching. The sequence of procedures for addition will vary according to the type of batch plant operation and equipment.

READY-MIX PLANT - DRY BATCH OPERATION

Boscoseal Admix powder is to be added into the drum of the ready-mix truck. Drive the truck under the batch plant and add 60% to 70% of the required water along with 140 kg to 230 kg of aggregates. 2 to 3 minutes of mixing is needed to ensure the Admix is distributed evenly throughout the mix water. Balance of materials are to be added into the ready-mix truck in accordance with standard batch practices.

READY-MIX PLANT - CENTRAL MIX OPERATION

Mix Boscoseal Admix with water to form a very thin slurry (e.g. 6 kg to 8 kg of powder mixed with 10 liters of water). Pour the required amount of material into the drum of the ready-mix truck. The aggregate, cement and water should be batched and mixed in the plant in accordance with standard practices (taking into account the quantity of water that has already been placed in the ready-mix truck). Pour the concrete into the truck and mix for at least 5 minutes to ensure even distribution of the Boscoseal Admix throughout the concrete.

PRECAST BATCH PLANT - PAN MIXER

Boscoseal Admix is to be added into the rock and sand, mix thoroughly for 2 to 3 minutes before adding the cement and water. The total concrete mass should be blended using standard practices.

NOTE :

While mixing Boscoseal Admix with the concrete, It is important to obtain a homogeneous mixture. Do not add dry Boscoseal Admix powder directly to wet concrete as this may cause clumping and thorough dispersion will not occur.

CURING

Normal practices for placing and curing concrete should be followed as laid out in your local standards.

PACKAGING

Boscoseal Admix is available in 20 kg pail.

STORAGE AND SHELF LIFE

Boscoseal Admix should be stored at room temperature of maximum 38°C, keep dry and out of direct sunlight. Shelf life is 18 months in tightly sealed original bag.

HEALTH AND SAFETY

Boscoseal Admix should only be used as directed. we always recommend that the Health & Safety Data Sheet is carefully read prior to application of the material. Our recommendations for protective equipment should be strictly adhered to for your personal protection.

The information and recommendations relating to the application and end-use of the product are given in good faith and based on tests which we believe to be reliable. Differing materials, substrates, environments, site conditions, and product storage, handling and application may affect results. However, no warranty in respect of merchantability or fitness for a particular purpose, nor any liability arising out of any legal relationship, whatsoever, can be inferred either from this information, or from any written recommendations, or from any other advise offered. No guarantee of their accuracy can be made because of the great range of field conditions and variation encountered in raw materials, manufacturing equipment and methods. Thus, the products are sold with limited warranty only, and on condition that purchasers will make their own tests to determine the suitability of the product for their particular purposes. Under no circumstances will Bostik be liable to anyone except for replacement of the products or refund of the purchase price.

BOSTIK HOTLINE

Smart help
+606 678 9788



Bostik Findley (Malaysia) Sdn. Bhd. 1994010000474 (286152-V)

Lot 112 & 113, Kawasan Perindustrian Senawang,
70450 Seremban, Negeri Sembilan,
Malaysia

Tel : +606 678 9788 Fax : +606 678 9766

www.bostik.com
an Arkema company

This document supersedes all previously published literature.