



FOILTAC 1C

TECHNICAL DATASHEET

Version: 2022-05-20

PRODUCT DESCRIPTION

Foiltac 1C is a 1-component cement-based mounting adhesive. Intended for mounting Bostik sealing film, sealing strips, inner and outer corners and pipe sleeves. The product is a self-curing (chemical drying) mounting adhesive.

AREA OF USAGE

Foiltac 1 C is used for mounting Bostik sealing film in wet rooms on board structures and mineral substrates. Can also be used for mounting sealing strips, the overlap for mounting the sealing film, tube sleeves and inner and outer corners.

WORKING INSTRUCTION

Cleaning: Ensure that the substrate has good surface strength and is free of dust, dirt, paint, glue residue, oil, grease, wax etc. Loose layers and sludge layers (concrete skin) are removed mechanically. The substrate must be able to withstand at least +15°C.

Pre-treatment: The substrate should always be pre-treated with BOSTIK PRIMER 6000 (on boards, dilute the primer with 10% water and on mineral substrates, dilute the primer with 1 part primer with 3 parts water). Strong suction substrates may need repeated primer treatments. Allow to dry! Mixture: Mix the contents of the package (10 kg) with 4.3 L of clean, cold water. Stir vigorously (for at least 2 minutes) with a drill equipped with a whisk to a homogeneous and light-flowing mass without lumps. The temperature of the compound should be between +10°C and +20°C. The pot life in the bucket is about 3 hours and the exposure time brushed on the substrate is about 10 minutes. Volume ratio: 1.9 litres of powder to 1.0 litres of water.

Application: Roll the mixed Foiltac 1 C onto the substrate or stretch out with a toothed trowel (3 mm). Roll out and mount one length at a time, otherwise there is a risk of the glue surface drying. It is important that the right amount is rolled on, one way to judge this is that the glue forms a texture that is then pushed away when mounting the sealing film with plastic putty. Work from the centre to the edges and squeeze out the excess glue. Loosen the film from time to time to check that full adhesive is present.

Consumption: 0.6 kg / m²

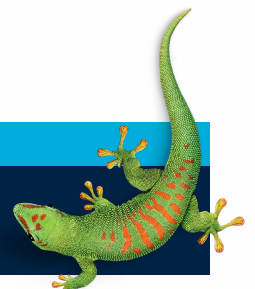
SAFETY

The product contains cement and is an irritant. For further information, see the safety data sheet

CONTACT US

TEL +46 (0)42-19 50 00

info.se@bostik.com



TECHNICAL DATA

FEATURES PRIOR TO APPLICATION	
Material type	Cement based with additives
Colour	White
Density	1.3 kg/litre
Curing time	Approx. 8 hours at +15°C
Material consumption	0.6 kg/m ²
Working temperature	Can be applied from +15° to +25°
Cleaning: Clean hands and tools immediately with lukewarm water	
Storage time	6 months in unopened packaging at +20° and in dry conditions

CONTACT US

TEL +46 (0)42-19 50 00

info.se@bostik.com

