



MEMBRANE 2C PART A

TECHNICAL DATASHEET

Version: 2023-05-16

PRODUCT DESCRIPTION

Bostik Membrane 2C is a diffusion open sealing membrane for indoor and outdoor use on floors and walls. Membrane 2C protects the underlying surface from moisture, but is permeable to water vapor (open to diffusion) so that the moisture in the underlying surface can escape. Membrane 2C reduces the risk of calcium precipitation caused by diffusion from the cement base, primarily concrete and plaster. Membrane 2C consists of two components, a cement powder component (Membrane 2C), and a dispersion, Bostik P7000. Membrane 2C has a smooth texture that is easy to apply. Membrane 2C must always be covered with a coating such as ceramic tiles.

AREA OF USAGE

Membrane 2C is a diffusion open sealing membrane designed for basements, balconies, terraces, kitchens, and public sanitary facilities. Membrane 2C can be used with electric and waterborne under-floor heating.

WORKING INSTRUCTION

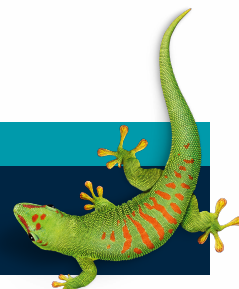
The surface must be clean, dry, solid, sustainable and free from dust and release agent. Walls and floors shall be designed in accordance with applicable building regulations they should be of material that is resistant to moisture. Concrete should be at least 1 month old, plaster surface should be at least 2 days before Membrane 2C is applied. Un-insulated concrete foundation slab should have a capillary barrier with a proper drainage. The relative humidity in the substrate must be 0.5 MPa, unless otherwise specified in the current job description. The surface should have a surface texture suitable for applying a sealing membrane. Absorbent surfaces of plaster and concrete should be pre-wetted to an evenly absorbent surfaces, no free water should be left standing on the surface. Before applying Membrane 2C please read the application instruction. Mix equal parts by weight of powder component Membrane 2C and Bostik P7000. Add the powder to the liquid under stirring. Use a slow spiral mixer. Mix for 2 - 3 minutes to a smooth homogenous consistency. Let the mixture sit for 3 minutes and stir again for 1 minute. Do not mix more Membrane 2C than you can use within 45 minutes. Membranes that have begun to stiffen in the bucket should not be mixed up with more P7000 or water. Application Membrane 2C should be applied in minimum two layers excluding the first pore filling layer. A first pore-filling layer should be applied using a scraper. There is a risk for pin-holes in the final sealing membrane if the pore are left infilled. Already smooth surfaces do not need this first layer. Assemble Bostik seals and pipe cuffs when the first layer of Membrane 2C is walkable, after approx. 3 hours. All seals and pipe cuffs should be fitted in Membrane 2C and sealed on top with the same material. Membrane 2C may be applied in max 1.5 mm per layer. There is a risk of cracking if Membrane 2C if there are ridges in the applied membrane. Second layer (first layer if the surface is smooth) is applied when all seals have been fitted. Membrane 2C is applied with a 4 mm toothed spatula; level the grooves with the smooth side of the spatula so that a smooth non-porous layer is obtained. The third layer is applied when the second layer has dried, after 5 hours. The third layer is applied the same way as the second layer. If there is a need more layers, then should be are applied in the same way. Maximum thickness is 4 mm. The drying time is extended at low temperature and high relative humidity. The freshly laid layer must be protected from rain, sunlight and frost before tiling. Membrane 2C should be by dried before tiling.

SAFETY

The product contains cement and is labeled irritating. For more information, see Safety data sheet

CONTACT US

TEL +46 (0)42-19 50 00
info.se@bostik.com



TECHNICAL DATA

Type:	Cement-polymer-based sealing membrane
Working temperature:	between +5 ° C and +25 ° C
Indoor:	Yes
Outdoor:	Yes
Consumption:	1.5 to 1.7 kg /m2 and mm
.	Balconies, terraces, basements, kitchens, etc. least 1mm
Drying time:	approx. 5 hours per mm at 25°C, 50% RH
Tiling:	after 12 to 72 hours
Thickness:	1.5 mm per layer up to 4 mm
Working time:	about 45 minutes
Water penetration:	7 days at 3 bar (30 meters of water)
Crack bridging:	according to EN 1062-7
Adhesion, concrete:	> 1 MPa (after 21 days water storage)
Cleaning tools:	Immediately with water
Packing:	5 kg bag
Storage:	12 months in cool, unopened container

CONTACT US

TEL +46 (0)42-19 50 00

info.se@bostik.com

