



ATTACHED TO YOUR WORLD

Smart Solutions For Professional Waterproofing

FOR INTERIOR, EXTERIOR, RISING MOISTURE AND ROOF



Adhesive solutions by **ARKEMA**

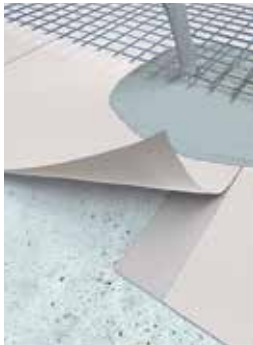


BLOCK B550 BOSCOSEAL 16

SELF ADHESIVE SHEET WATERPROOFING MEMBRANE

Boscoseal 16 waterproofing membrane is a self adhesive, self sealing layer of rubberized bitumen protected by a film of polyethylene. An overlap seam down each edge ensures complete sealing of overlap seams. Boscoseal 16 waterproofing membrane is composed of a uniform of rubber modified bitumen bonded to a polyethylene film. The physical properties will remain stable over time even under severe weather conditions. The adhesive side is protected by removable release paper. Designed for use as a water and vapor barrier in all unexposed waterproofing applications including terraces, plazas, bridge construction and as a sandwiched membrane in footings, vertical foundation walls, tunnels, subways and planter boxes.

- Self Adhesive, Self Sealing with Self sealing edge for overlaps
- Fully bonded
- Repaired easily
- Bonds to most substrates
- No seaming tape needed
- Excellent adhesion to vertical and horizontal surfaces
- High tensile and tear strengths
- Good puncture resistance



BLOCK X750 HDPE

PRE-APPLIED FULLY BONDED SHEET MEMBRANE

Membrane with Special Formulated Contact Adhesive system. Self-sealing system for a fast and One layer of HDPE film, pressure sensitive adhesive bonded strongly between HDPE film and reactive sand with a thickness of 1.2 mm, Width 1 metre, and Length of 20 metres. Pre-stripped 75mm side lap adhesive are used. Simple installation process without the need of chemical based construction sealants. It achieves its full sealing function in combination with freshly poured wet concrete. Adhesive bonds to the fresh concrete.

- Form integral seal to poured concrete
- Prevents lateral water migration
- Fully bonded watertight selvedge laps and detailing
- Easy to install, does not required primer
- Unaffected by hydrostatic pressure
- Unaffected by Contamination



WP X550 FOIL

FLEXIBLE WATERPROOFING AND DECOUPLING MEMBRANE

Deformable, crack-bridging, ready-to-use and water-impermeable fleece-laminated sealing film with a decoupling effect for quick composite sealing under ceramic tiles and slabs. Sealing film is made of modified polyethylene, laminated with polypropylene fleece on the top and bottom. After installation of the sealing film, ceramic coverings can be laid immediately. It is used protect tiles from damage when the substrate beneath them shifts. It can be used as a bonded seal under ceramic tiles and slabs for wall and floor surfaces that are directly and indirectly exposed to high levels of service and industrial water, indoors and outdoors, and as a pool seal up to 4 m in height.

- Composite waterproofing under ceramic coverings (AIVB).
- Can be walked on and laid immediately.
- Ready for use and very smooth processing.
- Very low emission
- Frost-resistant.
- Bitumen and solvent free.
- Radon-tight.
- Composite waterproofing in swimming pools up to 4 m filling height.
- On absorbent and non-absorbent substrates on wall and floor surfaces, as well as under water



WP X750 PEEL'N'STICK

PEEL & STICK SHEET MEMBRANE

Bostik WP X750 PEEL N STICK SHEET MEMBRANE is a Class 2 sealing membrane coated with butyl rubber adhesive complying with AS/NZ 4858. The one-sided non-woven layer allows good adhesion with common tile adhesives or sealants. It is used as a waterproofing membrane for internal wet areas including showers, bathrooms, kitchens, laundry & toilet areas below Tiles.

- Ready for use, No drying time. Can be tiled immediately
- Flood test immediately
- BRANZ appraised.
- Excellent adhesion to concrete; renders masonry, plasterboard ; FC sheet & plywood.
- Good decoupling properties.
- Solvent free. No adhesive required
- All applications to be covered by tile or other natural stones.
- Suitable for concrete; cement rendered masonry; FC sheeting; water resistant plasterboard; and structural plywood (Type A Stamped "PAA JAS-ANZ" to AS/NZS2269-2004) substrates.



**CemenTech
C2 Combi**

2K SEMI-FLEXIBLE

- Semi Flexible Cementitious Waterproofing
- From positive side only,
- Both vertical and horizontal,
- In wet areas (WC, bathroom, kitchen),
- In continuously wet, humid and damp areas such as balcony, terrace and cellar, water tanks, pools, reservoirs and storage tanks,
- Suitable for brush and sprayable use.



**CemenTech
C2**

2K-FLEXIBLE

- Flexible Cementitious Waterproofing
- From positive side only,
- In wet areas (WC, bathroom, kitchen),
- In foundations, basement walls, underground and surface construction works,
- In bridges and sustaining walls.
- Resistant to heavy weather conditions.
- High adhesion quality, strongly adheres to surfaces.
- High abrasion resistance.
- Flexible.
- Suitable for use in contact with drinking water.



**CemenTech
C2 Extra**

2K EXTRA FLEXIBLE

- Extra Flexible Cementitious Waterproofing
- From positive side only,
- Both vertical and horizontal,
- Swimming Pools, water tanks, pools, reservoirs and storage tanks,
- Provides impermeability against the pressured water effect.
- Resistant to heavy weather conditions.
- High adhesion quality, strongly adheres to surfaces.
- High abrasion resistance.
- Suitable for direct contact with freshwater
- Crack bridging up to 1,5 mm.



**CemenTech
C1 Duo**

1K CRYSTALLIZED

- Crystallized, both positive and negative side
- Reinforced with polymeric additives.
- Produces insoluble crystals when reacted with water.
- In amelioration, restoration and renovation works of old structures
- When applied on lean concrete, as soon as getting cured,
- It reacts with the free lime on the concrete and makes it impenetrable, filling the pores.
- Features hydraulic adhesion quality.
- Prevents wetness and water accumulation on cement based plastered surfaces.
- Prevents humidity and moisture permanently and eliminates unpressurized and weak water leakages.
- Nonflammable.



**CemenTech
X**

WATER PLUG

- One-component, fast-curing water plugging mortar that is reinforced with polymeric additives and used to solve waterproofing problems that stem from capillary effects,- In continuously wet, humid and damp areas
- Underground and surface construction works,
- Can be applied on any kind of bonded and plastered surface such as stone and bricks
- Allows fast application by drying very fast.
- Resistant to heavy weather conditions.
- Hydraulic cementing quality.
- Prevents humidity and moisture permanently and eliminates unpressurized and weak water leakages.
- Protects surfaces against destructive effects of humidity and moisture.



**CemenTech
C2 Duo**

2K CRYSTALLIZED

- Both in positive and negative sides,
- For walls, floors or ceilings,
- For water tanks, pools, reservoirs and storage tanks,
- Improvement, restoration and renovation works of old structures
- Reinforced with polymeric additives.
- Produces insoluble crystals when reacted with water.
- Features hydraulic adhesion quality.
- Prevents wetness and water accumulation on cement-based plastered surfaces.
- Prevents humidity and moisture permanently and eliminates unpressurized and weak water leakages.
- Protects surfaces against destructive effects of humidity and moisture.



AquaBlocker

HYBRID BASED LIQUID WATERPROOFING COATING

Based on the SMP technology, Aqua Blocker is a solvent-, water- and bitumen-free coating for buildings according to DIN 18195. Aqua Blocker liquid is a sealing compound for horizontal surfaces. After it has cured completely, the sealant will be completely impermeable to water.

- Extreme Crack bridging > 5mm with a 1.5mm thick cured coating
- Primeless application
- Direct application on damp surfaces
- Solvent and Bitumen free
- Pipe penetrations protection against soil moisture
- Under tile applications.



Boscoseal PU-X

POLYURETHANE WATERPROOFING COATING

Bostik Boscoseal PU-X is one component, ready to use, highly elastic, cold applied polyurethane waterproofing which cures into a membrane with excellent abrasion, mechanical, chemical, thermal and UV resistances.

- Crack bridging capability $\geq 2\text{mm}$
- Excellent thermal resistance over a temperature span of -40°C to $+90^{\circ}\text{C}$
- Resistant to salty water, aqueous solutions, diluted bases and acids, aliphatic solvents with and without appropriate topcoat.
- Impregnates by penetrating deeply into all mineral and concrete surfaces with high adherence
- Fills the non-structural capillary cracks by decreasing water absorbency of the concrete construction
- Hardens the upper surface of the concrete by deeply penetrating the surface
- Suitable onto old bituminous membranes and asphalt felts (e.g. APP and SBS), PVC, EPDM with special primers.



Cementone Water Seal

FAST DRYING EXTERIOR MASONRY & WOOD PROTECTOR

High performance water proofer that penetrates deep below the surface to provide a water resistant barrier on porous exterior surfaces. It protects for up to 10 years and can be applied by brush, roller or spray. The surface remains permeable to water vapor, allowing it to 'breathe', preventing water of being trapped. Some surfaces may darken very slightly, so always carry out a test on a small area before full application. Water Seal also helps to prevent condensation, efflorescence and frost damage.

- Prevents water penetration in a single coat
- Protects against rain, damp and frost
- Increases life of most building materials
- Suitable for concrete, brick, stone, slate, terracotta, render and timber
- Transparent coating, doesn't alter appearance of the treated surface.



BoscoSeal W

ELASTOMERIC ACRYLIC WATERPROOFING

Bostik Boscoseal W is an excellent quality elastomeric insulating brushable membrane, suitable for waterproofing roofs, terraces, balconies and any horizontal surface. Due to its reflectivity to solar radiation (SR: 0,85) it helps to reduce the internal temperature of buildings and consequently their energy requirements during summer.. Creates a tight membrane bridging hair cracks (Class A2 at -10°C), follows the contraction - expansion of the surfaces and retains its elasticity over time and adverse weather conditions.

- Bridges effectively existing small fissures & cracks – Class A2 (-10°C)
- Reflective to solar radiation (SR: 0,85)
- Excellent resistance to alkalis, solar radiation & severe weather conditions
- Helps to reduce the internal temperature of the building
- For waterproofing flat roofs, balconies, terraces and wet areas
- For waterproofing of existing terraces, old bitumen felts, waterproofing coatings, etc.

PU WATERSTOP

PU-BASED INJECTION FOAM

- Solvent free
- The medium-viscosity injection resin reacts with water to form a water-insoluble foam that expands in volume and thereby blocks the water passage
- Withstands high hydrostatic pressure
- Good adhesion to dry and moist substrates
- Cures to form a permanent and impermeable system
- Fast & flexible sealing
- Water-bearing cracks
- The foam is resistant to seawater.
- Seals water-carrying cracks and cavities.
- Can be used particularly well in underground constructions to interrupt the water flow for the subsequent lasting sealing.



TAPES

Flashband

SELF ADHESIVE FLASHING TAPES FOR ROOF

- Instant water seal for all climates
- For new buildings or emergency repairs
- Applied using hand pressure and a seam roller, with no requirement for special equipment for cutting, forming or fixing
- Bonds to most building materials including brick, masonry, slates, concrete roof tiles, wood, metal, concrete, terracotta tiles, glass, roofing felts, and rigid plastics.
- Applications include a large variety of original construction and maintenance situations including repairing lead flashing, sealing valley gutters, mending leaks in drain pipes and gutters, greenhouse repairs, protecting glazing bars, protecting insulation for pipes and tanks, repairing roofing felt joints on flat roofs



FlexBand LA

FLEXIBLE WATERPROOFING TAPE

- Flexible sealing band with alkali resistance, with three layer, good extension in cross direction and rigid lengthwise
 - Two outer layers composed of non-woven polypropylene, middle layer of aging resistant elastomeric rubber.
- It is suitable for use in waterproofing systems to prevent water to leak through the cracks from one side to another as a result of building movements.
- Used in indoors where there is pressurized water exposed to medium and high loads - even if exposed to chemicals - in the cracks arising from constructional movements.
 - Placed as an intermediate layer of waterproofing material in two coats to cover the stress with added reinforcement.



FlexBand 90 A

FLEXIBLE INNER CORNER WATERPROOFING TAPE

FlexBand 90 A is a new generation flexible sealing band with alkali resistance, three layer, extension in cross direction and rigid lengthwise two outer layers of Polypropylene non-woven, middle layer aging resistant Thermoplastic Elastomere rubber in inner corner areas. It is suitable for use in Cementitious and Waterproofing Coating systems in order to prevent water to leak through the cracks from one side to another as a result of building movements.



FlexBand 270 A

FLEXIBLE OUTER CORNER WATERPROOFING TAPE

FlexBand 270 A is a new generation flexible sealing band with alkali resistance, three layer, extension in cross direction and rigid lengthwise two outer layers of Polypropylene non-woven, middle layer aging resistant Thermoplastic Elastomere rubber in outer side areas. It is suitable for use in Cementitious and Waterproofing Coating systems in order to prevent water to leak through the cracks from one side to another as a result of building movements.



BOSCOMIX 152

CRYSTALLINE WATERPROOFING ADMIXTURE FOR CONCRETE

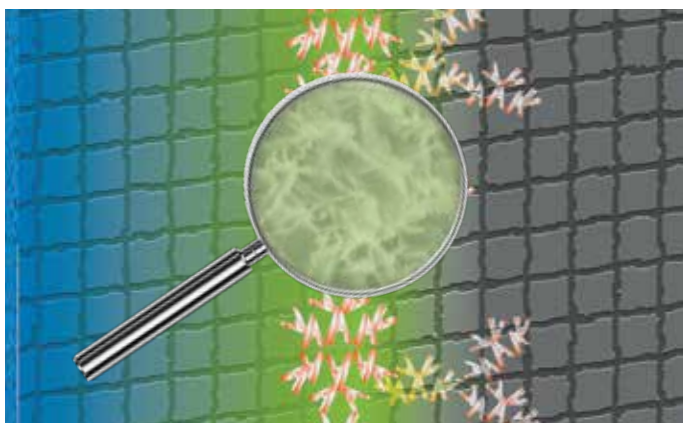


Why we need waterproofing Admixture?

Even though concrete is a hard and dense building material, it consists of micro pores and hairline cracks. Probability of bounding of these pores and hairline cracks, can cause the concrete to be porous. With this admixture, it is possible to insulate and blocked these micro pores and hairline cracks, and the water leakages and problems are avoided.

What is self healing?

The advanced morph crystalline ions have a “self healing” property and seals cracks and reactivates after many years with an everlasting re-activation process.

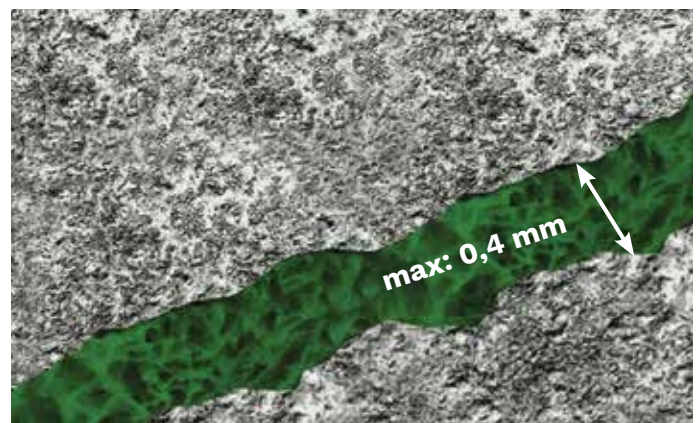


Why BoscoMix P152?

The advanced amorph crystalline ions existing in Bosco mix P152 formulation, gets in reaction when meets with water. These crystalline fills the micro pores and hairline cracks in concrete and stops the leakage of water. The concrete and the reinforcement is prevented from the water damages.

Boscomix P152 ions works during the life of concrete.

The advanced amorph cyristalline ions seal hairline static cracks up to 0,4 mm. Concrete crack sealing will be effective in non moving cracks only.



Where we use waterproofing Admixtures?

New technology waterproofing admixtures are used in concretes in, blindside or single-face concrete works, deep foundations, fundaments, basements, base slabs, retaining walls, underground & below ground constructions, precast concrete, manholes, parking structures, waster water tanks & reservoirs & swimming pools, elevator pits, complex architectural designs.

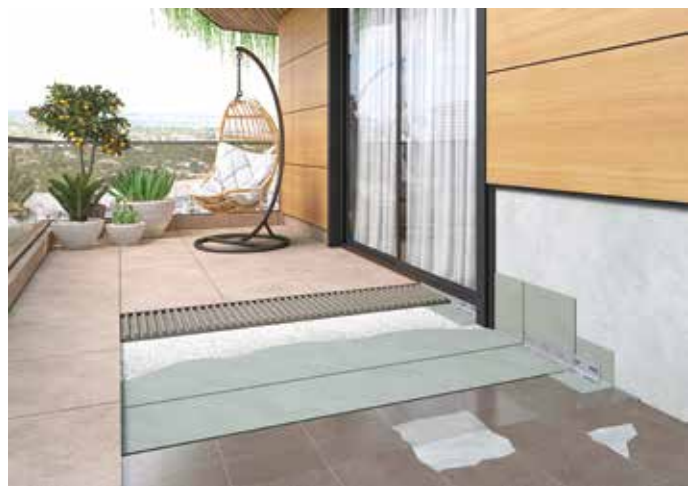
DISCOVER BOSTIK WATERPROOFING RANGE TO PROTECT YOUR BUILDINGS!



Pool Waterproofing With Cementech Series



Balcony Detail - Renovation with AquaBlocker





“Smart help”
+971 4 875 1700

Bostik MENA

Arkema Middle East

Office 1108, JBC 3 Tower, Cluster Y, Jumeirah Lakes Towers,
PO BOX 33 63 93, Dubai, UAE.

Phone: +971 4 875 1700 mail: bostik.mena-info@bostik.com
an Arkema company

www.bostik.com

Adhesive solutions by
ARKEMA