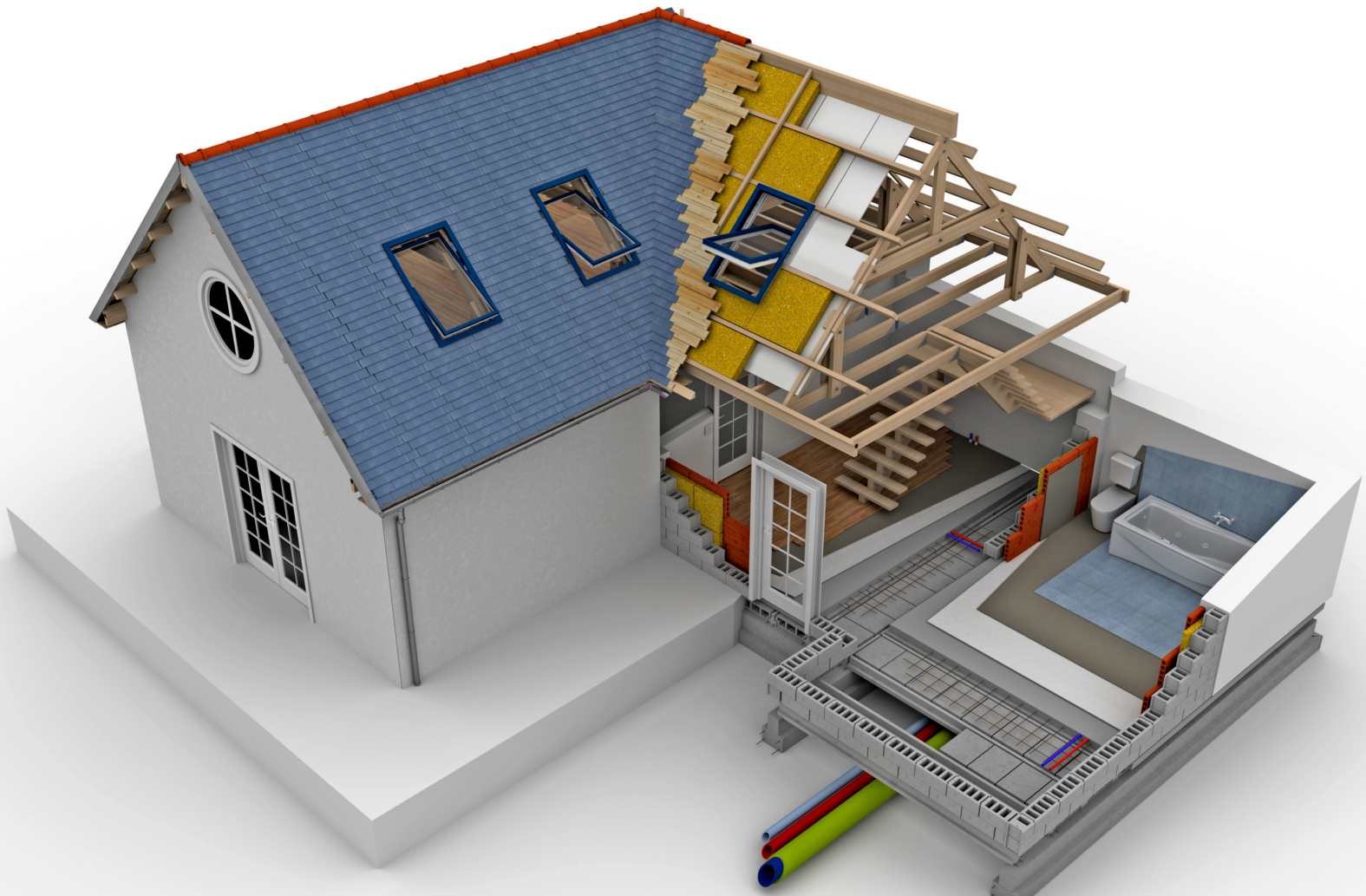




# Bostik's Building Envelope Solutions

**THE RIGHT PRODUCTS FOR YOUR APPLICATIONS**



Building codes require the entire building envelope to be engineered for compliance and energy efficiency. However, it can be challenging to meet those codes without the right adhesives and sealants. By using Bostik's customized line of waterproofing solutions, which are available for private label, you can easily do so. In addition to being certified and compatible with common building materials, these solutions can:

- Expand your product portfolio
- Increase your revenue
- Gain market share
- Ensure compatibility across your product line

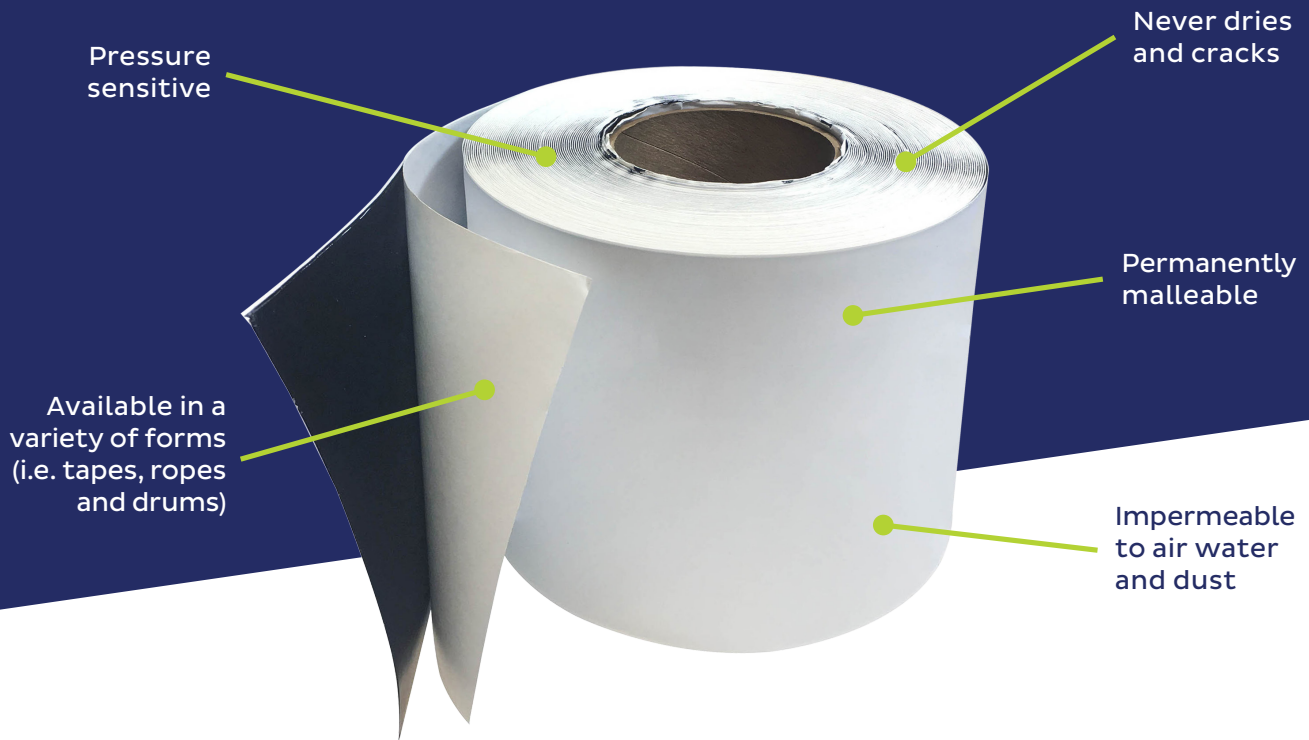
## **SELF-ADHERED FLASHING TAPE AND ROOFING UNDERLAYMENT**

Based on true butyl and hot melt chemistries, our adhesives for private label, self-adhered flashing tape and roofing underlayment applications meet specific performance and cost requirements.

In particular, they offer:

- Exceptional peel values
- High durability
- Excellent aging characteristics
- Adhesion to uneven and rough surfaces

We are also willing to work with you to design a custom adhesive to meet your exact needs.



## TRUE BUTYL & PIB-MODIFIED HOT MELT PRESSURE SENSITIVE ADHESIVE TECHNOLOGIES

### TRUE BUTYL

While the term “butyl” is widely used in the industry, it’s important to know that not all butyls are the same. Many are technically based on asphalt or other synthetic technologies. In fact, some butyls contain little to no butyl polymer and should not even be deemed butyls. Our true butyl solutions offer:

- Zero asphalt or bitumen content
- High heat resistance
- Installation temperatures ranging from 20° - 150°F (-7° - 65°C)
- Primerless adhesion to common substrates
- Flame retardant or resistant rating abilities
- Self-seals around fasteners
- AAMA 711 and ASTM certifications

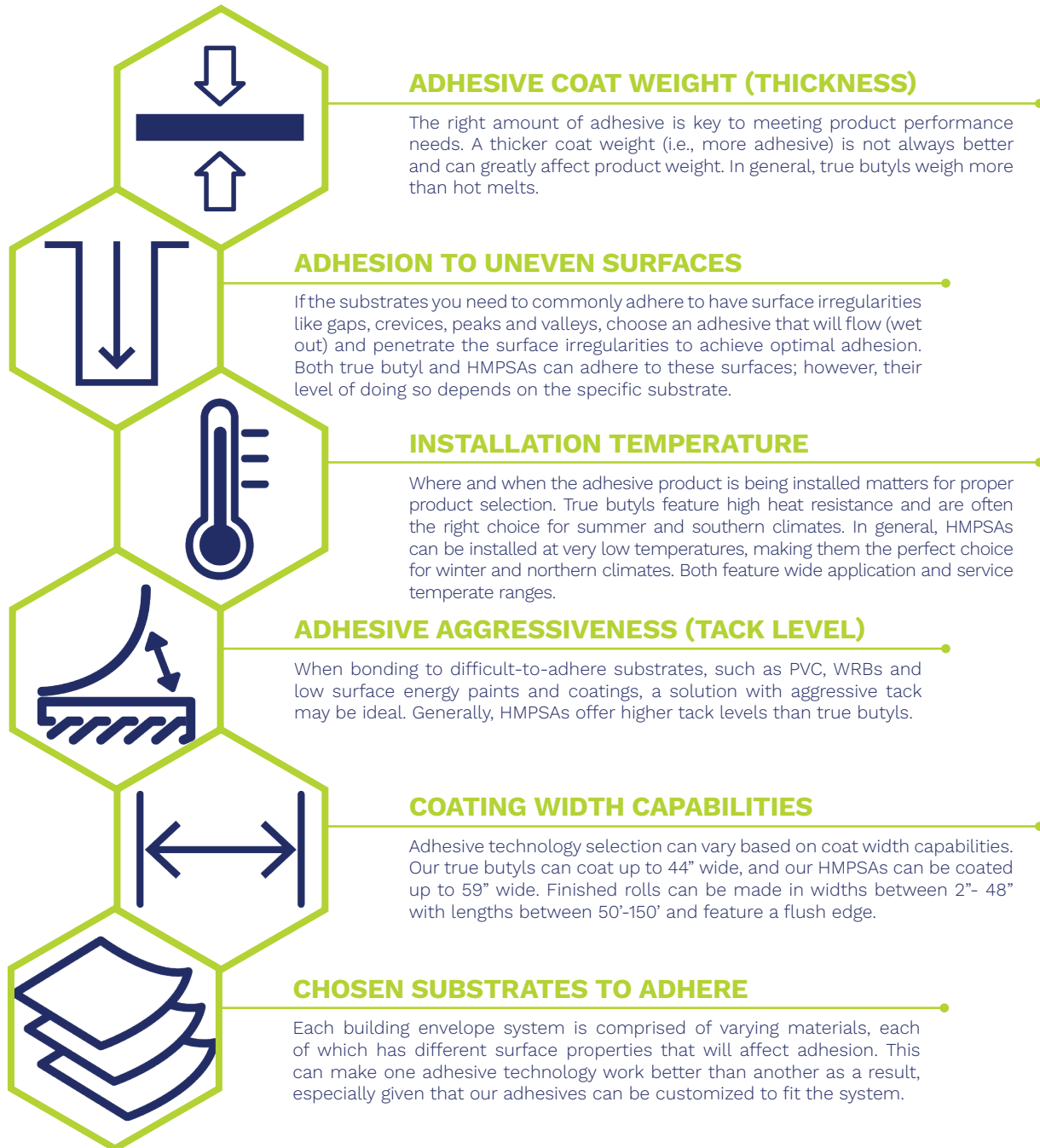
### HOT MELT PRESSURE SENSITIVE ADHESIVE (HMPSA)

Based on styrenic block copolymer chemistry, our HMPSAs are often modified with polyisobutene (PIB) to achieve demanding performance requirements. They offer:

- Aggressive adhesion (tack) without a primer to common substrates
- Installation temperatures ranging from 0° - 100°F (-18° - 38°C)
- Thin coat weights
- Excellent shear resistance
- Self-seals around fasteners
- AAMA 711 and ASTM certifications

## UNDERSTANDING YOUR ADHESIVE TECHNOLOGY NEEDS

Bostik experts will work with you to ensure the right adhesive technology is chosen for your given needs. Review the key criteria below regarding what goes into the selection process.





## CONSTRUCTION SEALANTS AND ADHESIVES

Based on silyl modified polymer (SMP/MS/STPE) and polyurethane (PU) chemistries, our construction sealants and adhesives possess the following:

- Primerless adhesion to common substrates
- UV stability
- Excellent weatherability
- High durability
- Application ease

## SMP VS. PU

When considering whether an SMP or PU sealant or adhesive is right for you, think about:



### SUBSTRATE COMPATIBILITY

Understand what you are bonding to in order to make an informed decision. In general, SMP bonds to a broader range of substrates compared to PU.



### CURE TIME

Consider how long of a working time your application needs. SMPs often cure faster than PUs.



### SUSTAINABILITY

SMP is isocyanate free, which can improve worker safety and reduce environmental impact compared to PU.

PRODUCT	CHEMISTRY	APPLICATIONS	KEY FEATURES	COLORS	VISCOSITY	SKIN TIME
<b>Pro-MS 50</b>	SMP	sealant	ASTM C920 Type S, Grade NS, Use A, G, Class 50; AAMA 800; ASTM E84 Class A	black white aluminum gray bronze terra cotta capitol tan desert tan stone limestone light gray medium bronze antique white	low	15-30 mins
<b>VSR 200A</b>	SMP	liquid-applied flashing	AAMA 714; ASTM E84 Class A trowelable	customizable	low	15-30 mins
<b>70-01A</b>	SMP		all-purpose sealant	black	low	10 mins
<b>70-03A</b>	SMP	sealant	high strength	black white gray	medium	10 mins
<b>70-05A</b>	SMP	adhesive sealant	high green strength	black white gray	medium	10 mins
<b>70-07A</b>	SMP	seam sealant	sprayable	gray	sprayable	30 mins
<b>70-08A</b>	SMP	adhesive, glazing/ backbedding	high green strength	black	high	10 mins
<b>915</b>	PU	sealant	ASTM C920 Type S, Grade NS, Use NT, Class 35; Miami-Dade approved	black white stone limestone bronze tan medium bronze aluminum stone terra cotta light gray	medium	240 mins
<b>915 FS</b>	PU	sealant	fast set version	black white capitol tan stone medium bronze terra cotta bronze aluminum grey light grey antique white limestone	medium	90 mins
<b>HDCA</b>	PU	adhesive	Subfloor and floor joist assemblies, adheres well to wet/frozen/treated lumber	white	medium	60 mins

## LIQUID-APPLIED FLASHING

Bostik offers VSR 200A, a 100% solids, liquid-applied flashing product based on SMP. Specifically designed for waterproofing rough openings, joints, seams and cracks in CMU, concrete and wood construction, this product is available in 20 ounce sausage containers and is gunnable and trowelable. It possesses:

- Vapor permeability: 13.6 perms at a 15mil coat weight
- Adhesion to common construction substrates without a primer
- 15-30 minute average skin time
- Compatibility with the complete line of Bostik waterproofing products
- Paintability
- Isocyanate free
- Standard and custom colors available
- Certification to AAMA 714-19 and ASTM E84 Class A rating

Ready to get started with our  
building envelope products?

**[Contact a Bostik expert today!](#)**





# BOSTIK

**IMPORTANT – PLEASE READ BEFORE USING THIS BROCHURE  
LEGAL DISCLAIMER**

All information contained herein is believed to be accurate as of the date of publication, is provided “as-is” and is subject to change without notice. This is not a warranty, an agreement, or substitute for expert or professional advice. Bostik Inc. expressly disclaims and assumes no liability for the use of the products or reliance on this information. It is the sole responsibility of the user to determine the suitability of any products for user’s application(s). **NO WARRANTY OF FITNESS FOR ANY PARTICULAR PURPOSE OR ANY OTHER WARRANTY, EXPRESS OR IMPLIED (INCLUDING SUITABILITY FOR USE IN ANY MEDICAL DEVICE OR MEDICAL APPLICATION), IS MADE CONCERNING THE PRODUCTS OR THE INFORMATION PROVIDED HEREIN.** The information provided relates only to the specific products designated herein and may not be valid where such products are used in combination with other materials or in any process. The performance of the product, its shelf life, and application characteristics depends on many variables, and changes in these variables can impact product performance. You are responsible to test the suitability of any product in advance for any intended use or application and before commercialization. Nothing herein shall be construed as a license for the use of any product in a manner that might infringe any patent and it should not be construed as an inducement to infringe any patent. Please carefully review the Safety Data Sheet for the product.

The Company adheres to a strict policy that applies to the use of any of its products in medical device applications. This policy can be found at <https://www.arkema.com/global/en/social-responsibility/innovation-and-sustainable-solutions/responsible-product-management/medical-device-policy/> which is incorporated herein by reference and made a part hereof. Except as expressly authorized, the Company (i) has designated specific medical grade compositions for products used in medical device applications and Company products not so designated are not authorized for use in medical device applications and (ii) strictly prohibits the use of any of its products in medical device applications that are implanted in the body or in contact with bodily fluids or tissues for greater than 30 days. The Company does not design, manufacture and/or directly sell any medical devices. The Company does not co-design, or offer assistance to any purchaser of its products, in their design, manufacture and/or sale of products for medical devices. It is the sole responsibility of the manufacturer of medical devices to determine the suitability of all raw material, products and components, including any medical grade products, in order to ensure that the medical device is safe for end-use and complies with all applicable legal and regulatory requirements and to conduct all necessary tests and inspections.