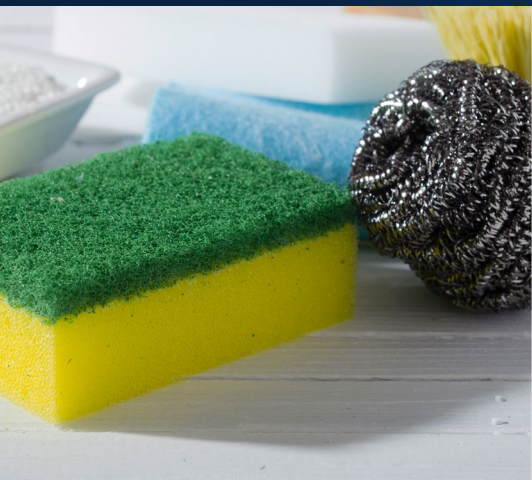




Address Your Textile Lamination Goals

WITH BOSTIK'S INNOVATIVE ADHESIVE SOLUTIONS



Your Ideal Lamination Adhesive Partner

For over 130 years, Bostik, an Arkema company, has been a leading global adhesive specialist, improving product performance overall while enhancing manufacturing processes' safety, efficiency and sustainability across industrial markets. Additionally, our global R&D network, comprised of four international Smart Technology centers and 11 regional centers, enables us to work closely with customers as their innovations expand to address our evolving world.



ONE-STOP-SHOP GLOBAL SOLUTION PROVIDER

As the only adhesive supplier to offer all lamination adhesive technologies, we are able to provide you with the right solution whenever you want it and wherever you need it. We can offer you:

- An unequalled product portfolio for all soft lamination adhesives
- Strong understanding of your needs and how to address them
- Enhanced supply chain in all regions for easily accessible products



Addressing Your Application Needs

Textile lamination crosses many different industries, which means your adhesives must address many application needs and goals. That's why our adhesives are designed with your needs in mind.



VERSATILITY

Every textile lamination application requires different specifications. Our broad adhesive portfolio can address your needs for a wide range of projects while also improving durability for enhanced product performance.



EFFICIENCY

Our high-quality adhesives make it easy to maintain speed, safety and quality during and after production. Compatible with most production equipment, our products ensure that you won't need to adapt your process to switch adhesives.



SUSTAINABILITY

We understand that you want to reduce your products' environmental footprint and maintain compliance with regulations. Our adhesives can enable you to lower your impact and meet important safety and quality standards.



Finding Your **Ideal Technology**

To find the best solution for your needs, it's important to understand the different adhesive technology capabilities and the requirements they can address. Consider these items when selecting your textile lamination adhesive technology:

POWDER, WEB AND FILM ADHESIVES

By converting our hot melt pellets into webs, films or powders, our solutions are able to adapt to your specific process and product needs, offering:

- **Strengthened efficiency:** Ideal for a wide range of applications in automotive, apparel and building insulation materials, our converted hot melts offer short set-up time and automation opportunities to reduce manufacturing steps.



PRO TIP:

It's important to find the right combination of pressure, time and temperature when dealing with hot melts. Work with your adhesive technical support team to address this.

HOT MELT ADHESIVES

These thermoplastic materials are used in a hot state, set quickly when cooling, and are compatible with a variety of processes. Ideal for lamination or bonding, they offer:

- **Enhanced versatility:** Our hot melts are compatible with many substrates, application methods and specifications for durable goods industries, including automotive, insulation and mattress manufacturing.



PRO TIP:

Pressure sensitive hot melt adhesives (PSAs) are self-tacking with a high resistance to shear and peel. When using these adhesives, keep in mind that their high tack properties make them great for peel and stick applications.



REACTIVE HOT MELT ADHESIVES

Our reactive hot melt polyurethanes (HMPURs) are applied at temperature and cure with moisture, creating a thermoset bond. This offers:

- **Enhanced environmental resistance:** Ideal for demanding applications like sportswear, medical and protective wear, these solutions possess increased resistance to washing and harsh environments and adhere to adhesion to difficult substrates.



PRO TIP:

When using HMPURs, consider applying them via dot lamination to provide textiles with optimal breathability and soft-hand feel.

LIQUID ADHESIVES

Our liquid adhesives can be water-based, solvent-based or reactive polyurethanes and offer:

- **Streamlined operations:** These solutions can be easily applied at room temperature and are fast curing. They are ideal for deep penetration into fibrous textiles, enhancing bond strength.



PRO TIP:

Consider liquid adhesives for textile lamination projects that require sensitive or difficult substrates, such as leather and technical textiles.

Providing Product and Equipment Compatibility

Our products are compatible with several application methods to best suit your needs:

APPLICATION METHOD	LIQUID	REACTIVE HOT MELTS	HOT MELTS	CONVERTED HOT MELTS		
				POWDER	WEB	FILM
Slot Nozzle	X	X	X			
Knife Coating	X	X	X	X		
Spray Nozzle	X	X	X			
Gravure Roller	X	X	X			
Rotary/ Screen Print		X	X	X		
Scattering				X		
Flat Bed/ Drum Calendar				X	X	X
IR Oven Preheat				X	X	X
High Frequency/ Ultrasonic/ Thermal Welding					X	X

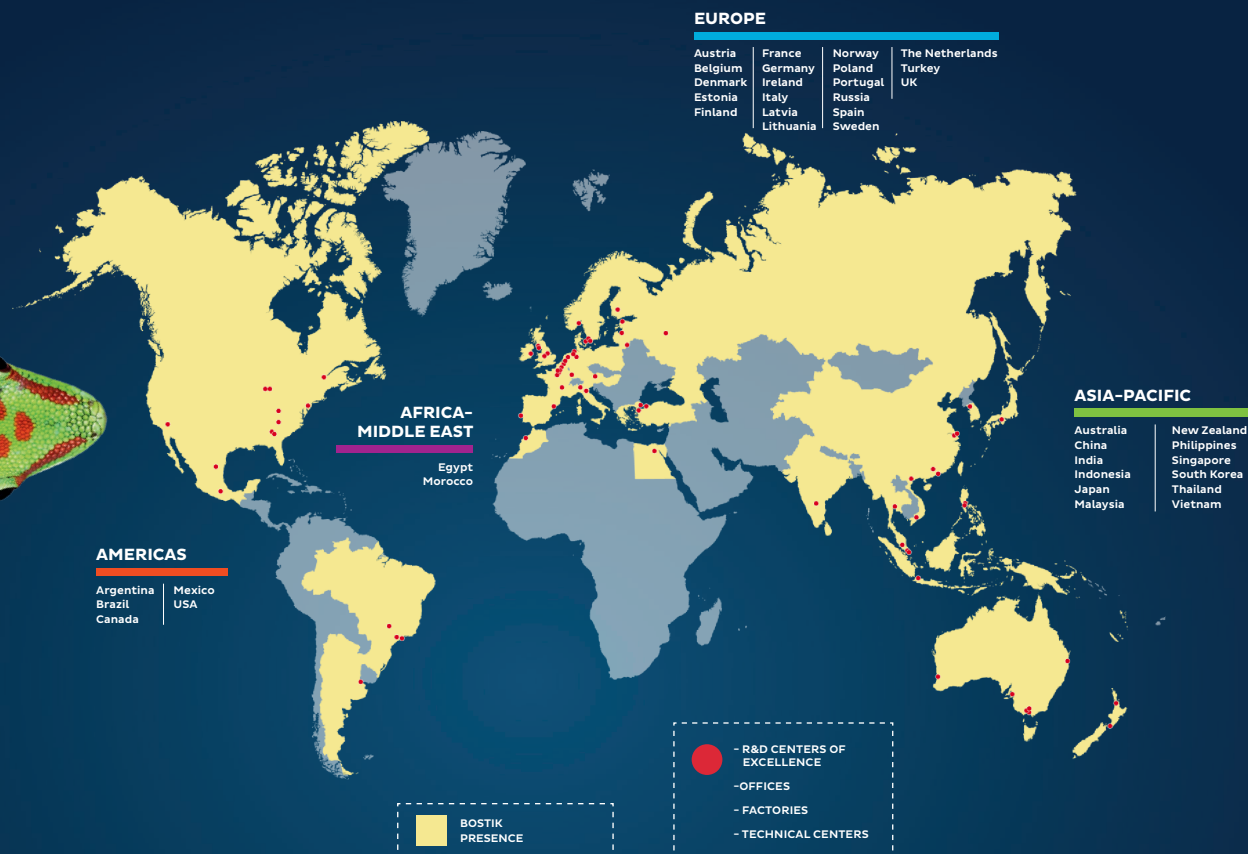


Let's Partner Together

Want to get started with a soft lamination project, and discuss your adhesive needs?

Contact a Bostik representative
to work together and find the right
solution for you.





IMPORTANT – PLEASE READ BEFORE USING THIS BROCHURE TERMS & CONDITIONS

Bostik offers this Brochure for descriptive and informational use only. The Brochure is not a contract and is not a substitute for expert or professional advice.

The statements, technical information, data, and recommendations contained herein are not exhaustive, are believed to be accurate as of the date hereof, and are not warranted in any way. The Brochure relies upon your knowledge and input, and as such, its results are based solely upon the information you provide and the choices that you make. Since the conditions and methods of use of the products and the information referred to herein are beyond our control, Bostik expressly disclaims any and all liability and damages that may arise from any use of the Brochure, the products, the results therefrom, or reliance on the information contain herein, and you hereby agree to waive any and all claims against Bostik relating in anyway thereto.

The Brochure is one of several tools that may be used to help you find the product best suited for your needs. It is used at your own risk, and by using it, you are knowingly accepting and assuming any and all risks associated with its use, recommendations, output and your selections. You are responsible to test the suitability of any product in advance for any intended use. Bostik does not guarantee the reliability, completeness, use,

or function of the Brochure or any recommendations arising therefrom. The data and information are provided 'AS IS'.

The information provided herein relates only to the specific products designated and may not be applicable when such products are used in combination with other materials or in any process. **Bostik encourages you to read and understand the Technical Data Sheet and the Safety Data Sheet for all products**, which are located on our corporate website.

NO WARRANTY OF FITNESS FOR ANY PARTICULAR PURPOSE OR WARRANTY OF MERCHANTABILITY, EXPRESSED OR IMPLIED, IS MADE CONCERNING THE PRODUCTS DESCRIBED OR THE INFORMATION PROVIDED HEREIN, AND SUCH WARRANTIES ARE HEREBY DISCLAIMED. Bostik disclaims any liability for direct, incidental, consequential, or special damages to the maximum extent allowed by law. Nothing contained herein constitutes a license to practice under any patent, and it should not be construed as an inducement to infringe any patent. You are advised to take appropriate steps to be sure that any proposed use of the products will not result in patent infringement.

By using this Brochure, you are hereby consenting to the above terms and conditions of use, and you agree to waive certain rights as set forth above.

Bostik
an Arkema company
www.bostik.com

06.01.21
© 2021 Bostik. All rights reserved.