



Acryl Power Seal

TECHNICAL DATASHEET

Version: 2019-11-01

PRODUCT DESCRIPTION

Acrylic grouting compound with many applications for use and a high environmental profile and interior properties. UV-protected and can be stored in cold weather down to -15°C.

AREA OF USAGE

To be used for sealing different interior building parts (walls, ceilings, installations etc.) to create a smooth and paintable surface. Use as an acoustic joint when a construction has requirements in terms of noise. Provides a seal between most construction materials such as wood, concrete, plaster, metal etc. Outside joints need to be painted over for the joint to be completely dry. Protect the joint from rainfall while it is drying.

Can be overpainted with most types of paint without the risk of cracks forming (dry the joint completely). Non-drip. Does not discolour surrounding material. Test whether it can be overpainted with a so-called joinery foundation paint to avoid cracks developing in the top coat. Maximum permitted joint expansion is $\pm 15\%$ of the original joint width. Use a retainer strip with wide joints (10-20 mm). Adjust the joint depth so that it is the same as the joint width.

Seal the joint around valves and pipe lead-ins for example or connections between walls and ceilings to achieve the intended noise requirement. With a 10-12 mm gap, the desired noise reduction will be achieved (wall R'w 35-52 db) if the seal is on both sides of the wall, alternatively a seal on one side and filling the hole with compressed mineral wool. The noise measurements have been taken in accordance with SS-EN ISO 10140-2:2010 and interpretation of measurement values in accordance with SS-EN ISO 717-1:1997.

WORKING INSTRUCTION

The surfaces should be dry, clean and free of grease. Start to smooth with a suitable tool immediately after application. Moisten the tool for best results. Can handle joint movements of up to 15%. Porous surfaces must be pretreated (1 part grouting compound/2 parts water) to achieve optimum adhesion between joints and substrates.

Start by opening the cartridge with a suitable cutting tool/knife. Screw on the nozzle and cut off the top at an angle of 45 degrees. Adjust the opening the width of the joint opening.

Apply the grouting compound to the substrate at such a rate that you can check whether the adhesion with the substrate is good. The grouting compound must fill the entire joint opening and attach to the sides of the joint. This is especially important when the grouting compound is used on vertical surfaces or in ceiling/wall angles.

Smooth off the joint with a suitable tool so that the surface is even (moisten the tool).

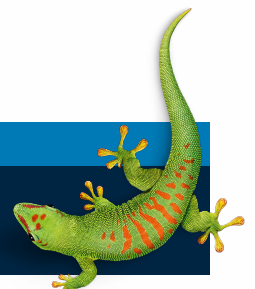
SAFETY

The grouting compounds fulfils the stringent requirements in terms of the environment and health and safety at work and emits low levels of emissions. For further information, always consult the relevant safety data sheet before using the product.

CONTACT US

TEL +46 (0)42-19 50 00

info.se@bostik.com



TECHNICAL DATA

Properties before application	
Material type	1-component acrylic-based dispersion paint
Setting system	Evaporation of water
Density	1.70 kg/l
Colour	White (closest colour match S0500-n)
Storage temperature	Down to -15°C, not sensitive to frost
Properties after application	
Operating temperature	+5°C to +40°C
Temperature resistance	-20°C to +75°C
Skin formation time	7 minutes at room temperature
Can be overpainted after	For best results, after 24 hours. Narrow joints (max. 5 mm deep) can be painted after approximately 1 hour.
Dry to the touch	After 30 minutes at room temperature
Completely dry joint	approx. 1 day (5x5 mm) at +25°C and 0% RH
Hardness	30 Shore A
Movement absorption ability	±15% of the original joint width
Can be overpainted	With water-based dispersion paints and a range of other types of paint. Consult Bostik's Guide to painting joints before starting work.
Ageing resistance	Very good against ozone and UV light
Outside use	Yes, after being painted over

CONTACT US

TEL +46 (0)42-19 50 00

info.se@bostik.com

