



MAXI BOND XPRESS

TECHNICAL DATASHEET

Version: 2018-04-09

PRODUCT DESCRIPTION

Maxi Bond Xpress is the ideal grab adhesive when you are short of time! Apply and load within 15 minutes. Maxi Bond Xpress takes up unevenness in the substrate to ensure that the entire adhesive surface helps to bear load. Maxi Bond Xpress gives the performance of a superglue, but is easy to apply and environment-friendly, with no solvents. Remains permanently flexible even after hardening, making it vibration damping. Maxi Bond Xpress is an SMP-based grab adhesive hardened by air humidity. It hardens without shrinking to a flexible adhesive grout. Adhesion performance Final tensile strength: 280 ton/m² Initial tensile strength: 200 kg/m² Final shear strength: 190 ton/m² Mounting hook/wall mounted: 100 kg/m² Strength build-up Wall mounted after 15 min.: 300 kg/m² Wall mounted after 30 min: over 600 kg/m² Full adhesive strength achieved within 3-5 days

AREA OF USAGE

Maxi Bond Xpress is used to glue most material types on wet and dry substrates, indoors and outdoors when a resistant and flexible adhesive is needed. Use when immediate loading of the glued joint is needed or when the glued object has to be moved within a short space of time. Adheres in principle to all building materials such as: wood, metals (painted and untreated), concrete, metal, ceramics, glass, stone, marble and plastic (not PE/PP/PFTE). Adheres two non-absorbent surfaces. Best result is when at least one surface is absorbent.

WORKING INSTRUCTION

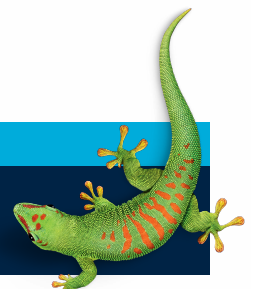
Surfaces must be clean, dry and non-greasy. Apply to one surface using a cartridge extruder. Apply adhesive strings 5 mm wide in rows 30 mm apart. Press together for 10 seconds to a layer of around 2-3 mm. Strength build-up in the adhesive starts after a few minutes. The glued object can usually be used without impact or fixing subsequently (providing the weight does not initially exceed 100 kg per square meter glue surface). Final adhesive strength is achieved after 3-5 days (190 ton/m²). Moisture can be added when gluing dense materials to accelerate hardening. E.g. by careful spraying with water. The strength of a grout can never be higher than the bearing capacity of the substrate. Always test-adhere plaster or rubber. The product will not adhere to PP/PE/PTFE plastics.

SAFETY

In accordance with the law, the product contents are not a health or fire risk. The product does not contain biocides. For more details, see safety data sheet.

CONTACT US

TEL +46 (0)42-19 50 00
info.se@bostik.com



TECHNICAL DATA

Properties before application	
Consistency	Thixotropic, supple paste
Working temperature	5°C to 35°C
Amount to use	Glue string 5 mm dia. 15 m/l
Fire hazard	No
Application	Hand extruder
Shelf life	Min. 12 months in unopened packaging. Store in a dry, cool place.
Density	1.50 g/cm ³
Properties after use	
Hardening system	Hardened by air humidity
Skin formation	5 -10 min
Hardness	65 Shore A
Adhesion growth	Full adhesion achieved after 3-5 days, depending on construction, temperature and humidity
Temperature resistance	Permanently elastic -40°C to 100°C
Ageing resistance	Very good
Cleaning agent	Non-hardened adhesive can be removed with Methylated spirit (or white spirit). Remove dried adhesive mechanically.
Chemical resistance	Good when in contact with diluted acids, lye and solvents
Overpainting	Yes, with dispersion paints. Painting using alkyd and solvent-based paints can disrupt and extend drying time. Test painting is recommended.

CONTACT US

TEL +46 (0)42-19 50 00

info.se@bostik.com

