



# Acryl Deco Surface+

## TECHNICAL DATASHEET

Version: 2018-08-10

### PRODUCT DESCRIPTION

High-quality acrylic paint with Bostik SPO technology. Can be painted over with most types of paint with no risk of cracks forming in the paint after approximately 24 hours of drying. Dry to the touch after approximately 10 minutes. The painted surface becomes smooth, free from cracks, perfusion and discolouration. Also applies to mat paints and joinery foundation paints. Narrow joints (max. 5 mm deep) can be painted after approximately 1 hour.

### AREA OF USAGE

Attaches to solid material made of wood, metal, cement, plaster, painted surfaces and tiles. Use for sealing in collaboration with internal painting work between walls/ceilings, around windows/doors/cracks and other connection joints with common construction material when there are stringent requirements for the end result in terms of the overpainted joints. Use a retainer strip with wide joints (10-20 mm). Adjust the joint depth so that it then corresponds to the joint width.

### WORKING INSTRUCTION

The surfaces should be dry, clean and free of grease. Using a suitable tool, start to smooth off immediately after application. Moisten the tool for best results. Can handle joint movements up to 10%. Porous surfaces must be pretreated (1 part grouting compound/2 parts water) to achieve optimal adhesion between the joint and the substrate.

Start by opening the cartridge with a suitable cutting tool/knife. Screw on the nozzle and cut of the top at an angle of 45 degrees. Adjust the opening to the width of the joint opening.

Apply the grouting compound to the substrate at such a rate that you can check that the adhesion with the substrate is good. The grouting compound must fill the entire joint opening and attach to the sides of the joint. This is especially important when the grouting compound is used on vertical surfaces or in ceiling/wall angles. Smooth off the joint with a suitable tool so that the surface is even (moisten the tool) – or use the method that you usually use.

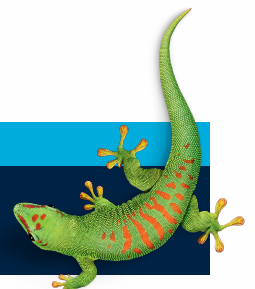
### SAFETY

The grouting compound fulfils stringent requirements with regards to the environment and health and safety at work and emits low levels of emissions. For further information, always consult the relevant safety data sheet before using the product.

### CONTACT US

TEL +46 (0)42-19 50 00

info.se@bostik.com



## TECHNICAL DATA

Properties before application	
Material type	1-component acrylic dispersion paint
Setting system	Evaporation of water
Density	1.60 kg/l
Colour	White (closest colour match S0500-n)
Storage temperature	Down to -15°C, not sensitive to frost
Properties after application	
Operating temperature	+5°C to +40°C
Temperature resistance	-20°C to +75°C
Skin formation time	10 minutes at room temperature
Can be overpainted after	For best results, after 24 hours. Narrow joints (max. 5 mm deep) can be painted after approximately 1 hour.
Completely dry	2 days (5x5 mm) at +25°C and 60% RH
Hardness	40 Shore A
Movement absorption ability	±10% of the original joint width
Can be overpainted	With water-based dispersion paint and most other types of paint. 24 hours drying time also ensures crack-free painting on mat paints and types of paint with a low level of binding agent. Consult Bostik's Guide for painting joints before starting work.

## CONTACT US

TEL +46 (0)42-19 50 00

info.se@bostik.com

