



EPOXY RAPID

TECHNICAL DATASHEET

Version: 2016-05-31

PRODUCT DESCRIPTION

Epoxy based two component adhesive, fast curing. Joint filling properties and transparent adhesive. Cures in 10 minutes and obtains full strength after around 1 hour.

AREA OF USAGE

Bonds metal, wood, glass, ceramics, leather, rubber, most plastics etc. The joint is water resistant but the adhesive should not be used if the joint will be permanently exposed to water. May be sanded and overpainted. Temperature resistant from -50°C to $+65^{\circ}\text{C}$.

WORKING INSTRUCTION

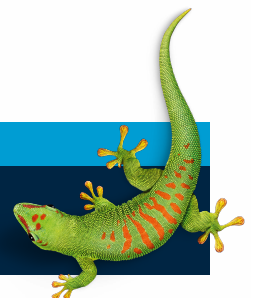
Pre treatment 1. The substrate should be clean, dry and free from dust, oil and grease. To achieve best possible adhesion, polish the surface with a piece of sandpaper. Wash glass and similar non absorbent surfaces with an alkaline cleaning agent, rinse with clean water and let dry. 2. Break off the cap of the syringe, press suitable amount of adhesive on an even surface. 3. Mix thoroughly for about 45 seconds. Mixed adhesive should be applied instantly. 4. Apply the adhesive in a thin layer on both surfaces. Put together instantly and clamp the surfaces in a suitable way for about 10 minutes. The joint will obtain full strength after about 1 hour.

SAFETY

The contents of the product are, in accordance with valid legislation, classified as being irritating and harmful to the environment. Avoid direct skin contact. Use suitable gloves. Not flammable. For further information, please consult material safety data sheet.

CONTACT US

TEL +46 (0)42-19 50 00
info.se@bostik.com



TECHNICAL DATA

Properties before application	
Product type	Epoxy based, two components adhesive
Colour	Base: neutral. Hardener: yellow
Consistency	Slightly thixotropic
Density	Mixed adhesive: 1,16 kg/litre
Flammable	No
Working temperature	>18 °C
Handling time	After mixing of base and hardener, the adhesive should be used within 1,5 hours.
Storage	3 years in unopened package, at room temperature.
Package	Tube 2x15 ml and 2x100 ml. Syringe 2x12 ml
Properties after application	
Cleaning	Excess adhesive is cut clean using a sharp knife before the adhesive is cured.
Colour	Transparent
Resistance	Excellent when occasionally exposed to water. Not suitable when permanently exposed to water. Excellent resistance to common domestic chemicals and solvents.
Temperature resistance	-50 °C to + 65 °C
Paintable	Yes
Sandable	Yes

CONTACT US

TEL 042-19 50 00

info.se@bostik.com

