



STYLE FLOOR

TECHNICAL DATASHEET

Version: 2019-02-07

PRODUCT DESCRIPTION

Bostik STYLE FLOOR is a coloured liquid filler for concrete flooring indoors

AREA OF USAGE

Bostik STYLE FLOOR is supposed to stay open after treatment with Bostik PROTEC PRIMER and Bostik PROTECT which provides a mat protective sealing. The liquid filler can be laid in layers of 4-15 mm but the optimal layer thickness is 5-10 mm. For thick layers, distance strip should be used in floor/wall angle, columns and corners, etc. The concrete substrate must be clean and with good surface strength. Laitance must be mechanically removed. The concrete substrate must hold at least + 10C and the relative humidity of the concrete under 90% and sinking. Excessive moisture in the concrete substrate must not occur. Prior to apply liquid filler must Bostik STYLE BASE be applied to the concrete substrate twice.

WORKING INSTRUCTION

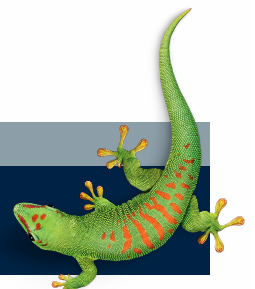
A bag Bostik STYLE FLOOR (25 kg) is mixed with 6.75 (27%) of clean, cold water. Mix with a strong low-speed whisk stirrer for 3 minutes to a homogeneous lump-free mass. Leave the mass stand for one minute before mixing again. NOTE! It is important to move exactly for the same time from bag to bag to avoid excessive colour changes. Usage time approx. 20 minutes and open time 15 minutes. Filler sample SS ring 140 mm and with ONE ring 125 mm. When pumping, water pressure is very important. Call Bostik in case of doubt. The liquid filler is pumped or poured out on the concrete substrate and then by itself flows together to a smooth flat surface. Distribute, if necessary, 2-pin spacer. All processing of the liquid filler leaves traces (colour changes). Take into account the filler's working time in order to avoid humps and unevenness. The surface can normally be trampled after 4 hours (+ 20C). The following day, the liquid filler is treated with Bostik STYLE PROTECT PRIMER and Bostik STYLE PROTECT, read the procedure for each product.

SAFETY

The product contains cement and is an irritant to skin. For more information, refer to the product Safety Data Sheet

CONTACT US

TEL +46 (0)42-19 50 00
info.se@bostik.com



TECHNICAL DATA

Properties before application	
Surface	Concrete floors
consumption	approx. 1,5 kg/mm per 1 mm foam thickness
Processing Temp.	Optimum + 15C - + 25C, not below + 5C or above +30C
mixture	6.75 litres of water to 25 kg of powder (1 bag).
packaging	25 kg bag, 42 bags / pallet.
Workable for 15-20 minutes.	
walkable	ca. 4 hours, (+20C).
Floor Heating	Yes
Rolling wheelchair	Yes with 4 mm layer thickness (DIN EN 12529)

CONTACT US

TEL +46 (0)42-19 50 00

info.se@bostik.com

