



STYLE PROTECT

TECHNICAL DATASHEET

Version: 2019-02-07

PRODUCT DESCRIPTION

Bostik STYLE PROTECT is a 2-component water-based impregnating agent to seal Bostik STYLE FLOOR.

AREA OF USAGE

Bostik STYLE PROTECT is used to seal Bostik STYLE FLOOR and provides a mat, protective surface against discoloration, dirt and diluted chemicals.

WORKING INSTRUCTION

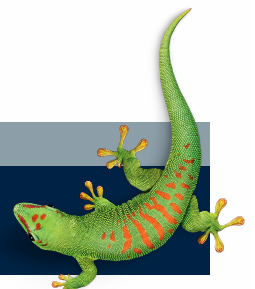
Wear protective goggles and protective gloves when you mix and apply Bostik STYLE PROTECT. Open the 5-liter can (comp.A) and place the supplied sieve in the opening. Pour gently into a clean bucket. The silencer catches any lumps. To avoid splashing, drain the cans from the side so that air can get into the can at the same time (or punch the can with a knife). Then add the two supplied 0.5 litre plastic bottles (comp.B). Mix a couple of minutes with a clean low-grade whip to avoid foaming. Bostik STYLE PROTECT is applied evenly over the flap with lint-free rollers (type ANZA Elit). Allow the sealing compound to dry for approx. 5 hours, + 20C), furthermore a seal is carried out. If the first layer has dried for more than 24 hours, a slight peeling should be done before new sealing. Do not mix larger batches than cannot be consumed within 2 hours. The mixing ratio in volume is 5 parts comp. A and 1 part comp. B. A full load of 6 litres is sufficient for 30 sqm in 2 applications.

SAFETY

Contains isocyanates. Can cause an allergic reaction. For more information, refer to the Safety Data Sheet.

CONTACT US

TEL +46 (0)42-19 50 00
info.se@bostik.com



TECHNICAL DATA

Properties before application	
Processing Temp.	+ 15C - + 25C.
Drying	about 5 hours (+ 20C).
Consumption	0.1 lit./kvm
Application	Anza Elit Roller (does not release lint).
Storage	Protect from freezing. 12 months. in unopened packaging.
Packaging	5 litres. can + 0.5 litres (2 pcs.) in a common carton.

CONTACT US

TEL +46 (0)42-19 50 00

info.se@bostik.com

