



LIM & TÄT

TECHNICAL DATASHEET

Version: 2016-05-31

PRODUCT DESCRIPTION

Airdrying 1-part assembly adhesive and sealant. The adhesive is applied in strings and the consistency is easy to apply, flexible and free from threads. Bonding can be done under various conditions indoor as well as outdoor. Strong adhesion to most materials, also to cold, wet and fatty surfaces. The glue line gets a high strength and remains somewhat elastic with good water-, cold- and heat resistance.

AREA OF USAGE

Bostik Lim-o-Tät has a large range of use within many branches like assembly bondings at building- and interior works. Bonding and sealing of sheet joints within plate and ventilation. Also for works within boat branch like deck, board etc and as the allround adhesive in the villa and the housekeeping. Bostik Lim-o-Tät has good adhesion to wood, fibre boards, gypsum, laminate, tile, stone, concrete, grout, brick etc (not cellular plastic). Bostik Lim-o-Tät has special built-in properties giving excellent bonding result to metals like stainless steel, galvanized sheet, aluminium etc.

WORKING INSTRUCTION

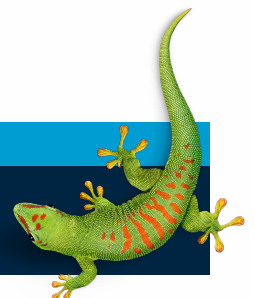
Check that the surfaces are free from loose particles. Prepare the application by cutting off the pipe of the cartridge to a suitable diameter, Bostik Lim-o-Tät is applied in fitting strings or dots with a hand- or air-pressure gun. The adhesive can also be used for filling works. Press surfaces together within 5 minutes and check that the adhesive "wets" over on both contact surfaces. The adhesive normally keeps the materials immediately on place, but at some bondings it can be suitable to press the details until the adhesive has dried. The drying time varies between 1-24 hours depending on humidity and temperature as well as the absorbing ability of the materials. Full strength is normally reached after 4-5 days. When Bostik Lim-o-Tät is used as a sealant e g in a visible recess joint it is important, if the joint string must be smoothed on the surface, this is done within a couple of minutes as the adhesive quickly forms a surface skin. Preferably a joint stick dipped in soap suds is used for the smoothing. Any spots are removed with Bostik Glue & Paintbrush washing or acetone.

SAFETY

The product is flammable. Use effective ventilation or breathing equipment type A2. For further information, please see material safety data sheet.

CONTACT US

TEL +46 (0)42-19 50 00
info.se@bostik.com



TECHNICAL DATA

Properties before application	
Type	1-part one-way adhesive for string bonding
Binder	Synthetic rubber
Solvent	Aliphatic and aromatic hydrocarbons
Consistency	Flexible paste free from threads
Colour	Beige
Storage	2 year at +10°C to +20°C in unopen package
Means of application	Hand- or compressed-air gun
Cleaning	Bostik Glue & Paintbrush washing or acetone
Density	1.14 g/cm ³
Solids	approx 70% by weight
Covering power	Glue string Ø 5 mm: 50 running metres/litre
Working temp. cold surfaces	From about -5°C to +25°C
Flammable	Yes
Flash point	-5°C
Properties after application	
Shearing strength	About 250 N/cm ² to plywood
Temperature resistance	-30°C to +100°C
Moisture resistance	Very good
Ageing resistance	Very good
Colour	Beige
Growth in strength	Full strength normally after 14 days

CONTACT US

TEL 042-19 50 00

info.se@bostik.com

