



# PERFECT SEAL STONE ADHESIVE HAND

## TECHNICAL DATASHEET

Version: 2020-02-24

### PRODUCT DESCRIPTION

Single-component polyurethane adhesive in foam form for fixation of building blocks and stone on non-load-bearing walls, brick walls or other separating building components/structures. Perfect Seal Stone Adhesive enables you to perform masonry work significantly more quickly and cleanly than with mortar. The adhesion process means that the work environment becomes less dusty, and no tools are required. Very economical, saving both time and money. Application takes place with the nozzle that is included with the product.

### AREA OF USAGE

Adhesive with high resistance - can be used indoors and out. For use on non-load-bearing structures/walls and barriers, although not fire compartment structures. Designed for use with horizontal adhesion – not vertical hanging. The bonded joint should be protected against UV/sunlight after the work is finished. The adhesion against the surface should always be checked and examined, as a number of different types of surfaces may occur in different situations. This adhesive also bonds to foam, metal, wood, etc.

### WORKING INSTRUCTION

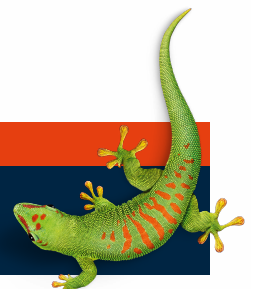
Clear/clean the work surface from dust, loose particles, grease and oil prior to use. Hold the bottle in an upright position and screw on the nozzle (hold the nozzle with one hand and screw the bottle with the other). When screwing on the nozzle, it is important to ensure that no one is in front of the nozzle. Do not screw the nozzle onto the bottle when the valve is turned downwards. After you have attached the nozzle, shake the bottle vigorously at least 20 times, and turn it into the work position so that the bottom of the bottle is facing upwards. A pre-moistened surface guarantees better results. The amount of adhesive/foam can be adjusted with the trigger on the nozzle. The product can be used at temperatures between 0 °C to +35 °C. The container should be stored at a temperature of +5 °C to +25 °C (the best results are achieved at +20°C). Perfect Seal Stone Adhesive creates a thin adhesive layer when the adhesive leaves the nozzle. The stone surfaces should be adjoined immediately. The adhesive must be applied to both the vertical and horizontal sides of the block. Non-cured foam can be removed with Acetone, while cured foam must be removed mechanically. You can easily remove cured stone adhesive with the help of e.g. a sharp trowel when the masonry work is finished.

### SAFETY

The safety data sheet must be read and understood prior to use, to ensure the use of appropriate worker protection and safety equipment. It is important to use the protective gloves that are included with the product.

### CONTACT US

TEL +46 (0)42-19 50 00  
info.se@bostik.com



## TECHNICAL DATA

Properties before application	
Material type	1-component polyurethane foam adhesive
Colour	Light yellow
Installation temperature (climate/surface)	0 °C to +35 °C
Installation temperature (cartridge)	The container should be stored at +5 °C to +25 °C (best results at +20°C).
Storage conditions	Store indoors in a cool and dry location, standing upright (vertically).
Properties after application	
Tack-free adhesive surface	8-15 minutes
Drying time/setting time (stable structure)	approx. 30 minutes
Drying time/setting time (total)	Completely dry/set after 24 hours at +23 °C and after 72 hours at +5°C
Temperature resistance	Cured adhesive -30 to +80 °C (momentarily up to +120 °C)

## CONTACT US

TEL +46 (0)42-19 50 00

info.se@bostik.com

