



BRANZ Appraised

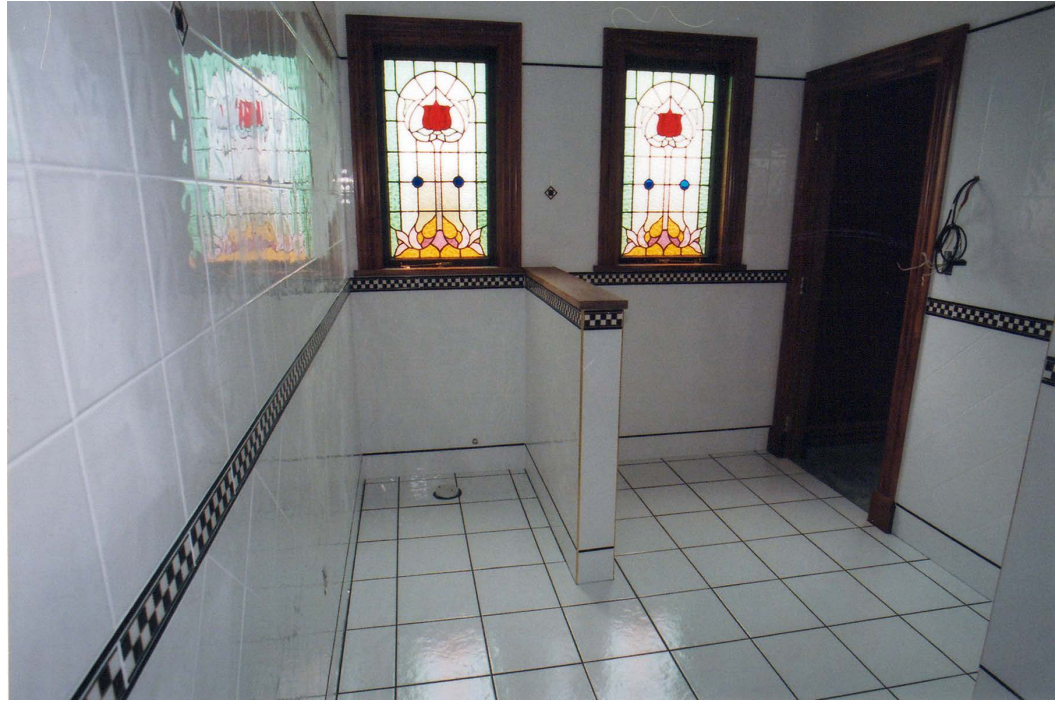
Appraisal No. 581 [2015]

DAMPFIX 3 WET AREA MEMBRANE

Appraisal No. 581 [2015]

This Appraisal replaces BRANZ
Appraisal No. 581 [2007].

Amended 02 February 2017



BRANZ Appraisals

Technical Assessments of
products for building and
construction.



Bostik New Zealand Ltd

PO Box 35-093

Naenae 5041

Lower Hutt

Tel: 04 567 5119

Fax: 04 577 3776

Web: www.bostik.co.nz



BRANZ

BRANZ

1222 Moonshine Rd,

RD1, Porirua 5381

Private Bag 50 908

Porirua 5240,

New Zealand

Tel: 04 237 1170

branz.co.nz



Product

- 1.1 Dampfix 3 Wet Area Membrane is a liquid-applied waterproofing membrane for use under ceramic or stone tile finishes in internal wet areas.

Scope

- 2.1 Dampfix 3 Wet Area Membrane has been appraised for use as a waterproofing membrane for internal wet areas of buildings, within the following scope:
 - on floor substrates of concrete, plywood, compressed fibre cement sheet and fibre cement sheet tile underlay, and on wall substrates of concrete, concrete masonry, wet area fibre cement sheet lining systems and wet area plasterboard lining systems; and,
 - when protected from physical damage by ceramic or stone tile finishes; and,
 - where floors are designed and constructed such that deflections do not exceed 1/360th of the span.
- 2.2 The use of Dampfix 3 Wet Area Membrane on concrete slabs where hydrostatic or vapour pressure is present is outside the scope of this Appraisal.
- 2.3 Movement and control joints in the substrate must be carried through to the tile finish. The design and construction of the substrate and movement and control joints is specific to each building, and therefore the responsibility of the building designer and building contractor and is outside the scope of this Appraisal.
- 2.4 Ceramic or stone tile finishes are outside the scope of this Appraisal.
- 2.5 The membrane must be installed by Bostik New Zealand Limited Trained and Approved Applicators.

Building Regulations

New Zealand Building Code (NZBC)

- 3.1 In the opinion of BRANZ, Dampfix 3 Wet Area Membrane, if designed, used, installed and maintained in accordance with the statements and conditions of this Appraisal, will meet the following provisions of the NZBC:
 - Clause B2 DURABILITY:** Performance B2.3.1 (b) 15 years. Dampfix 3 Wet Area Membrane meets this requirement. See Paragraph 9.1.
 - Clause E3 INTERNAL MOISTURE:** Performance E3.3.6. Interior wet area floors and walls incorporating Dampfix 3 Wet Area Membrane meets this requirement. See Paragraphs 11.1 to 11.4.
 - Clause F2 HAZARDOUS BUILDING MATERIALS:** Performance F2.3.1. Dampfix 3 Wet Area Membrane meets this requirement and will not present a health hazard to people.
- 3.2 This is an Appraisal of an Alternative Solution in terms of New Zealand Building Code compliance.

Technical Specification

- 4.1 Materials supplied by Bostik New Zealand Limited are as follows:
- **Dampfix 3** - A two-component, cementitious, acrylic modified, fibre reinforced waterproofing membrane. It is supplied as a powder in 10 kg multi-wall bags and a liquid in 10 kg plastic pails. When dry, the membrane is grey in colour.
 - **ASA Multiprime** - A synthetic latex based primer for a variety of porous substrates. It is supplied as an opaque pink liquid in 1, 5 and 20 litre cans.
 - **Bostik N40 Primer** - A solvent based etching primer for priming PVC wastes. It is available in 1 litre cans.
 - **Dampfix Moisture Seal** - A two part water based epoxy for sealing against rising damp, seepage, grease, oil, detergent and mild chemicals. It is supplied as 4, 8, 20 and 40 litre kits.
 - **ASA Neutral Cure Silicone** - A flexible, neutral cure silicone for use as expansion joint filler and bond breaker for wall/wall and wall/floor junctions. It is supplied as a white or coloured paste in 300 ml cartridges.
 - **Bostik NP Primer** - A 2 component water based epoxy primer for non-porous substrates. It is available in 4 and 8 litre kits.

Handling and Storage

- 5.1 All materials must be stored inside, up off concrete floors, in dry conditions, out of direct sunlight and out of freezing conditions. The membrane products have a shelf life of 24 months from date of manufacture in the original unopened packaging. Once opened, the products must be used within 3 months.

Technical Literature

- 6.1 Refer to the Appraisals listing on the BRANZ website for details of the current Technical Literature for Dampfix 3 Wet Area Membrane. The Technical Literature must be read in conjunction with this Appraisal. All aspects of design, use, installation and maintenance contained in the Technical Literature and within the scope of this Appraisal must be followed.

Design Information

General

- 7.1 Dampfix 3 Wet Area Membrane is for use in buildings where an impervious waterproof membrane is required to floors and walls to prevent damage to building elements and adjoining areas.
- 7.2 Dampfix 3 is designed to be used where a quicker curing time is required, such as in cool or humid conditions.
- 7.3 The membrane must be protected from physical damage by the application of ceramic or stone tile finishes.
- 7.4 Movement and control joints may be required depending on the shape and size of the building or room, and the tile finish specified. Design guidelines can be found in the BRANZ Good Practice Guide to Tiling.
- 7.5 Timber framing systems must comply with NZS 3604, or where specific engineering design is used, the framing shall be of at least equivalent stiffness to the framing provisions of NZS 3604, or comply with the serviceability criteria of AS/NZS 1170. In all cases framing must be provided so that the maximum span of the substrate as specified by the substrate manufacturer is met and all sheet edges are fully supported. Timber framing systems supporting the substrates must be constructed such that deflections do not exceed 1/360th of the span. Where NZS 3604 is used, the allowable joist spans given in Table 7.1 shall be reduced by 20%.

Substrates

Plywood

- 8.1 Plywood must be a minimum of 17 mm thick complying with AS/NZS 2269, CD Grade Structural with sanded C face upwards and treated to H3.2 [CCA treated]. LOSP treated plywood must not be used. The Plywood must be supported with dwangs or framing with a maximum span of 400 mm in each direction, fixed with 10 g x 50 mm stainless steel countersunk head screws at 150 mm centres on the edges and 200 mm through the body of the sheets.

Fibre Cement Compressed Sheet/ Fibre Cement Sheet Tile Underlay

- 8.2 Fibre cement compressed sheet and tile underlay must be manufactured to comply with the requirements of AS 2908.2. It must be specified by the manufacturer as being suitable for use as a wet area substrate and fixed according to the manufacturers instructions. The Fibre Cement Compressed Sheet must be of a thickness to meet specific structural design requirements.

Concrete and Concrete Masonry

- 8.3 Concrete and concrete masonry substrates must be to a specific engineering design meeting the requirements of the NZBC, such as concrete construction to NZS 3101 and NZS 3604 Concrete Slab-On-Ground Floors and Concrete masonry to NZS 4229 and NZS 4230.

Wet Area Wall Linings

- 8.4 Plasterboard wall linings must be manufactured to comply with AS/NZS 2588, and be covered by a valid BRANZ Appraisal for use in internal wet areas.

Durability

Serviceable Life

- 9.1 Dampfix 3 Wet Area Membrane, when subjected to normal conditions of environment and use, is expected to have a serviceable life of at least 15 years and be compatible with ceramic or stone tile finishes with a design service life of 15-25 years.

Maintenance

- 10.1 No maintenance of the membrane will be required provided significant substrate movement does not occur and the tile finish remains intact. Regular checks must be made of the tiled areas to ensure they are sound and will not allow moisture to penetrate. Any cracks or damage must be repaired immediately by repairing the tiles, grouts and sealants.
- 10.2 In the event of damage to the membrane, the tiling must be removed and the membrane repaired by removing the damaged portion and applying a patch as for new work.
- 10.3 Drainage outlets must be maintained to operate effectively, and ceramic or stone tile finishes must be kept clean.

Internal Moisture

- 11.1 Dampfix 3 Wet Area Membrane is impervious to water and when appropriately designed and installed will avoid the likelihood of water penetrating behind linings or entering concealed spaces.
- 11.2 Dampfix 3 Wet Area Membrane is suitable for use to contain accidental overflow to meet NZBC Clause E3.3.2. A means of Code Compliance for overflow is given in NZBC Acceptable Solution E3/AS1, Paragraph 2.
- 11.3 Surfaces must be finished with ceramic or stone tile finishes. A means of Code Compliance to NZBC Clause E3.3.3 is given in NZBC Acceptable Solution E3/AS1, Paragraph 3.1.1 [b] and 3.1.2 [b].
- 11.4 Falls in showers and shower areas must be a minimum of 1 in 50. In unenclosed showers, falls must extend a minimum of 1500 mm out from the shower rose. Floor wastes must be provided and the floor must fall to the outlet.
- 11.5 The waterproofing membrane must completely cover shower bases, and for unenclosed showers it must extend a minimum of 1500 mm out from the shower rose. Further design guidance on waterproofing wet areas, including waterproofing walls and junctions can be obtained from AS 3740, the 'BRANZ Good Practice Guide to Tiling', and flooring and wallboard manufacturers.

- 11.6 Where water resistant wall finishes such as prefinished sheet materials are used, they must flash over the membrane a minimum of 30 mm.
- 11.7 BRANZ recommends the entire floor be covered by a waterproof membrane for bath, shower and spa rooms where timber and plywood floors are used.

Installation Information

Installation Skill Level Requirement

- 12.1 Installation of the membrane must be completed by Bostik New Zealand Limited Trained and Approved Applicators.
- 12.2 Installation of substrates must be completed by tradespersons with an understanding of internal wet area construction, in accordance with instructions given within the Bostik New Zealand Limited Technical Literature and this Appraisal.

Preparation of Substrates

- 13.1 Substrates must be dry, clean and stable before installation commences. Surfaces must be even and free from nibs, sharp edges, dust, dirt or other materials such as oil, grease or concrete formwork release agents.
- 13.2 Concrete substrates can be checked for dryness by using a hygrometer as set out in BRANZ Bulletin No. 424. The relative humidity of the concrete must be 75% or less before membrane application.
- 13.3 All voids, cracks, holes, joints and excessively rough areas must be filled to achieve an even and uniform surface. Junctions of substrate abutments, such as at wall/floor and wall/wall junctions must have a bond breaker joint system or reinforced underflashing installed as set out in the Technical Literature.
- 13.4 Substrates must be primed and allowed to cure before the membrane is installed.

Membrane Installation

- 14.1 Installation must not be undertaken where the substrate surface temperature is below 10°C or above 35°C.
- 14.2 Dampfix 3 powder and liquid must be mixed and left to stand for 5 minutes before re-mixing, then applying.
- 14.3 The membrane must be applied in a minimum of two coats at the rates set out in the Technical Literature. Subsequent coats must be applied in an opposite direction to the previous coat. The total finished system thickness of the Dampfix 3 membrane must be a minimum of 1.2 mm.
- 14.4 Application can be made by roller (medium/long nap), brush (long bristle), or a notched steel trowel (finished with a flat steel trowel).
- 14.5 A reinforcement fabric may be embedded into the wet 2nd coat to provide movement protection at wall/wall and wall/floor junctions, or any other areas such as joints in the flooring substrate, floor cracks, or around penetrations in the membrane. In all other situations, reinforcement provisions as set out in this Appraisal and the Technical Literature apply.
- 14.6 Clean up may be undertaken with water.

Tiling

- 15.1 The membrane must be fully cured before tiling. The cured membrane must be protected at all times to prevent mechanical damage, so may require temporary covers until the finishing is completed.
- 15.2 Tiling must be undertaken in accordance with AS 3958.1 and the 'BRANZ Good Tiling Practice Guide'. The compatibility of the tile adhesive must be confirmed with the adhesive manufacturer or Bostik New Zealand Limited.

Inspections

- 16.1 Critical areas of inspection are:
- Construction of substrates, including crack control and installation of bond breakers and movement control joints.
 - Moisture content of the substrate prior to the application of the membrane.
 - Acceptance of the substrate by the membrane installer prior to application of the membrane.
 - Installation of the membrane to the manufacturer's instructions, particularly installation to the correct thickness and use of reinforcement.
 - Membrane curing and integrity prior to the installation of tiles including protection from mechanical damage during curing and prior to tile installation.

Health and Safety

- 17.1 Safe use and handling procedures for the membrane is provided in the Technical Literature. The materials must be used in conjunction with the relevant Material Safety Data Sheet.

Basis of Appraisal

The following is a summary of the technical investigations carried out:

Tests

- 18.1 The testing on Dampfix 3 has been undertaken by various organisations:
- Testing to AS/NZS 4858, Water Vapour Transmission to ASTM E96-92 and Water absorption. Adhesion to various substrates, low temperature flexibility to AC148: 2001 and cyclic movement.
 - Test methods and results were reviewed by BRANZ and found to be satisfactory.

Other Investigations

- 19.1 An assessment was made of the durability of Dampfix 3 Wet Area Membrane by BRANZ technical experts.
- 19.2 Site visits have been carried out by BRANZ to assess the practicability of installation and to examine completed installations.
- 19.3 The Technical Literature has been examined by BRANZ and found to be satisfactory.

Quality

- 20.1 The manufacture of the membrane has been examined by BRANZ, and details regarding the quality and composition of the materials used were obtained by BRANZ and found to be satisfactory.
- 20.2 The quality of supply of the membrane system materials to the market is the responsibility of Bostik New Zealand Limited.
- 20.3 Quality on site is the responsibility of the Bostik New Zealand Limited Trained and Approved Applicators.
- 20.4 Designers are responsible for the substrate design, and building contractors are responsible for the quality of construction of substrate systems in accordance with the instructions of the substrate manufacturer, Bostik New Zealand Limited and this Appraisal.
- 20.5 Building owners are responsible for the maintenance of the tiling or stone finishing systems in accordance with the instructions of Bostik New Zealand Limited.



Sources of Information

- AS 2908.2: 2000 Cellulose-cement products – Flat sheet.
- AS 3958.1 Guide to the installation of ceramic tiles.
- AS/NZS 1170: 2002 Structural design actions.
- AS/NZS 2269: 2012 Plywood-Structural.
- AS/NZS 2588: 1998 Gypsum Plasterboard.
- AS/NZS 4858: 2004 Wet area membranes.
- NZS 3101: 2006 The design of concrete structures.
- NZS 3604: 2011 Timber-framed buildings.
- Acceptable Solutions and Verification Methods for New Zealand Building Code External Moisture Clause E2, Ministry of Business, Innovation and Employment, Third Edition July 2005 [Amendment 7, 01 January 2017].
- Ministry of Business, Innovation and Employment Record of Amendments for Compliance Documents and Handbooks.
- The Building Regulations 1992.
- Good Practice Guide to Tiling, BRANZ, April 2015.

Amendments

Amendment No. 1, dated 02 February 2017.

This Appraisal has been amended to remove Dampfix 2 Membrane.



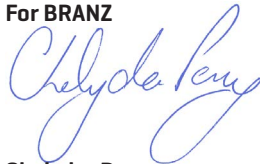
In the opinion of BRANZ, **Dampfix 3 Wet Area Membrane** is fit for purpose and will comply with the Building Code to the extent specified in this Appraisal provided it is used, designed, installed and maintained as set out in this Appraisal.

The Appraisal is issued only to **Bostik New Zealand Ltd**, and is valid until further notice, subject to the Conditions of Appraisal.

Conditions of Appraisal

1. This Appraisal:
 - a) relates only to the product as described herein;
 - b) must be read, considered and used in full together with the Technical Literature;
 - c) does not address any Legislation, Regulations, Codes or Standards, not specifically named herein;
 - d) is copyright of BRANZ.
2. **Bostik New Zealand Ltd**:
 - a) continues to have the product reviewed by BRANZ;
 - b) shall notify BRANZ of any changes in product specification or quality assurance measures prior to the product being marketed;
 - c) abides by the BRANZ Appraisals Services Terms and Conditions.
 - d) Warrants that the product and the manufacturing process for the product are maintained at or above the standards, levels and quality assessed and found satisfactory by BRANZ pursuant to BRANZ's Appraisal of the product.
3. BRANZ makes no representation or warranty as to:
 - a) the nature of individual examples of, batches of, or individual installations of the product, including methods and workmanship;
 - b) the presence or absence of any patent or similar rights subsisting in the product or any other product;
 - c) any guarantee or warranty offered by **Bostik New Zealand Ltd**.
4. Any reference in this Appraisal to any other publication shall be read as a reference to the version of the publication specified in this Appraisal.
5. BRANZ provides no certification, guarantee, indemnity or warranty, to **Bostik New Zealand Ltd** or any third party.

For BRANZ



Chelydra Percy

Chief Executive

Date of Issue:

11 June 2015