



EPOXY EXTRA STRONG

TECHNICAL DATASHEET

Version: 2016-05-31

PRODUCT DESCRIPTION

Epoxy based two component adhesive which offers an extra strong bonding. Joint filling properties, light yellowish adhesive. Long open time (around 1,5 hours) which makes it optimal for complicated bonding constructions.

AREA OF USAGE

Bonds metal, wood, glass, ceramics, leather, rubber, most plastics etc. The joint is water resistant but the adhesive should not be used if the joint will be permanently exposed to water. May be sanded and overpainted. Temperature resistant from -50°C to $+65^{\circ}\text{C}$.

WORKING INSTRUCTION

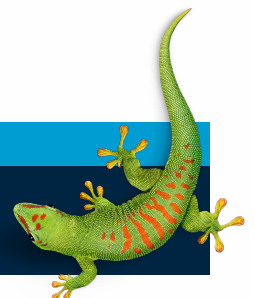
Pre treatment 1. The substrate should be clean, dry and free from dust, oil and grease. To achieve best possible adhesion, polish the surface with a piece of sandpaper. Wash glass and similar non absorbent surfaces with an alkaline cleaning agent, rinse with clean water and let dry. 2. Break off the cap of the syringe, press suitable amount of adhesive on an even surface. 3. Mix thoroughly for about 45 seconds. Do not mix more adhesive than will be used within 1,5 hours. 4. Apply the adhesive in a thin layer on both surfaces. Put together instantly and clamp the surfaces in a suitable way. Curing time in room temperature around 6 hours. The joint will obtain full strength after around 15 minutes. Press the lid from the handle and seal the syringe after using the product.

SAFETY

The contents of the product are, in accordance with valid legislation, classified as being irritating and harmful to the environment. Avoid direct contact with skin. Use suitable gloves. Not flammable. For further information, please consult material safety data sheet.

CONTACT US

TEL +46 (0)42-19 50 00
info.se@bostik.com



TECHNICAL DATA

| Properties before application | |
|-------------------------------|---|
| Product type | Epoxy based, two components adhesive |
| Colour | Base: neutral. Hardener: yellow |
| Density | Mixed adhesive: 1,05 kg/litre |
| Flammable | No |
| Working temperature | >18 °C |
| Package | Tube 2x15 ml nad 2x100 ml. Syringe 2x12 ml |
| Handling time | After mixing of base and hardener, the adhesive should be used within 1,5 hours. |
| Storage | 3 years in unopened package, at room temperature. |
| Properties after application | |
| Paintable | Yes |
| Sandable | Yes |
| Cleaning | Excess adhesive is cut clean using a sharp knife before the adhesive is cured. |
| Colour | Light yellowish |
| Resistance | Excellent when occasionally exposed to water. Not suitable when permanently exposed to water. Excellent resistance to common domestic chemicals and solvents. |
| Temperature resistance | -50 °C to + 65 °C |

CONTACT US

TEL 042-19 50 00

info.se@bostik.com

