



# BOSCOCEM SLURRY

## TWO-COMPONENT CEMENTITIOUS WATERPROOFING

### KEY FEATURES

- Can be tiled over successfully.
- Ability to withstand heavy topping without fracture.
- Bonds well to damp surfaces.
- Hard and abrasion resistant.

### DESCRIPTION

Boscocem Slurry is a cement-based two-component acrylic reactive polymer modified waterproofed coating. Boscocem Slurry is highly effective for positive side waterproofing.

### RECOMMENDED USES

Boscocem Slurry is designed for external and internal waterproofing protection to;

- Water Tanks
- Bathrooms, Balconies, terraces
- Swimming pools, Pool decks
- Water Features
- Planter Boxes, Canopies

As waterproofed underlayment to prevent seepage before laying marbles.

### SUBSTRATE PREPARATION

All substrates shall be sound, clean and free of dust, excess mortar, oil or other loose particles. Cracks, honeycombs and other defects must be repaired using suitable cement mortar.

For excessively dry substrate, dampen the substrate and keep it continuously moist for 1 to 2 hours before application. Remove all excess water or standing water and allow the surface to become almost dry to provide an SSD (Saturated Surface Dry) condition before applying the waterproofing coating.

### APPLICATION INSTRUCTION

#### PRIMING

For excessively dry and porous substrate, prime the entire surface with Bostik Hydroment 425 prior application of the waterproofing coating with the rate of 5m<sup>2</sup> per litre depending of the substrate condition.

#### MIXING

Boscocem Slurry is packed ready to use in 2 components.

### PERFORMANCE PROPERTIES

Typical properties conducted at 23°C and 50% RH

Form	Part A - White Milky Liquid Part B - Grey Powder
Binder	Cement
Extender	Selected Fine Silica
Polymer	Acrylic Polymer
Adhesion to concrete	~ 1.0N/mm <sup>2</sup>
Toxicity	Non toxic
Pot Life	30 minutes
Set to touch (at 20°C)	Within 2 hours
Final set (at 20°C)	24 hours

Always put the liquid component in a clean mixing container, and slowly add the powder component whilst stirring. Mix until homogeneous slurry is obtained and make sure that no unmixed powder is left at the bottom of the container. Mix on site using a slow speed mechanical mixer. Small amount may be hand-mixed separately.

### PLACING

The mixed Boscocem Slurry can be applied onto the prepared substrate using a brush or broom. Place the material well onto the substrate to achieve full bond.

The application of Boscocem Slurry waterproofing coating shall be done in minimum of two (2) layers, the first layer in one direction and the second layer in a direction perpendicular to the first coat.

Leave the first coat to set between 3 to 6 hours before applying the second coat.

If the first layer is left overnight, the surface shall be dampened before subsequent applications.

### RECOMMENDED COVERAGE

- Waterproofing for bathrooms floor, terraces and balconies is 1.0kg/m<sup>2</sup>/layer x 2 layers
- Waterproofing for water tank, and swimming pool is 1.0kg/m<sup>2</sup>/layer x 3 layers

### CURING

The finished Boscocem Slurry must be protected from rapid drying. Curing shall be at least 24 hours before trafficking, to yield optimum strength.

## PACKAGING

Boscocem Slurry is available in three packing.  
10 kgs/set, 25kg/set and 37.5kg/set.

10 kgs/set - Part A : liquid 2 kgs, Part B : powder, 8 kgs.  
25 kgs/set - Part A : liquid 5 kgs, Part B : powder, 20 kgs.  
37.5 kgs/set - Part A : liquid 7.5 kgs, Part B : powder, 30 kgs.

## CLEAN UP

All tools, equipments and surrounding areas can be cleaned with clean water before the product sets.  
Hardened material has to be mechanically removed.

## STORAGE AND SHELF LIFE

The shelflife of this product is 12 months from the date of manufacturing if stored properly in original, unopened and undamaged sealed packaging.

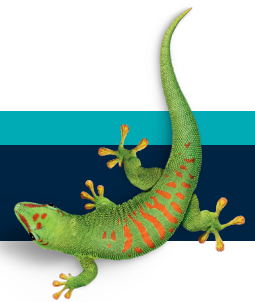
## HEALTH AND SAFETY

Suitable protection clothing, dust masks, gloves and eye protection should be worn. Continual or extended contact with cement products can cause skin irritation. If skin irritation occurs, flush skin with water for a minimum of 15 minutes. If irritation still persist, consult medical advises.

The information and recommendations relating to the application and end-use of the product are given in good faith and based on tests which we believe to be reliable. Differing materials, substrates, environments, site conditions, and product storage, handling and application may affect results. However, no warranty in respect of merchantability or fitness for a particular purpose, nor any liability arising out of any legal relationship, whatsoever, can be inferred either from this information, or from any written recommendations, or from any other advise offered. No guarantee of their accuracy can be made because of the great range of field conditions and variation encountered in raw materials, manufacturing equipment and methods. Thus, the products are sold with limited warranty only, and on condition that purchasers will make their own tests to determine the suitability of the product for their particular purposes. Under no circumstances will Bostik be liable to anyone except for replacement of the products or refund of the purchase price.

**BOSTIK HOTLINE**

**Smart help**  
**+606 678 9788**



**Bostik Findley (Malaysia) Sdn. Bhd.** 1994010000474 (286152-V)

Lot 112 & 113, Kawasan Perindustrian Senawang,  
70450 Seremban, Negeri Sembilan,  
Malaysia

Tel : +606 678 9788 Fax : +606 678 9766

**www.bostik.com**  
**an Arkema company**

This document supersedes all previously published literature.