



# BOSCOSEAL AC2

ONE PART FIBRE REINFORCED WATERPROOFING MEMBRANE

## KEY FEATURES

- Low odour for ease of use in internal applications
- Excellent rolling and brushing ability
- Environmentally friendly
- Fibre reinforced, does not require the use of additional reinforcing matting
- Water based for easy application and clean up
- Flexible
- Excellent UV resistance
- Foot trafficable

## DESCRIPTION

Boscoseal AC2 is a one part water based acrylic polymer fibre reinforced waterproofing membrane. It is specially formulated for commercial and residential internal and external waterproofing applications. Low in odour, it is well suited to internal use. It offers excellent rolling ability and easy application by brush or roller. The fibre reinforced composition of Boscoseal AC2 combines a matrix binder within the membrane structure to provide extra strength and form high build dry film thickness. Boscoseal AC2 does not require the use of additional reinforcing matting.

## RECOMMENDED USES

- Internal wet areas to be tiled including showers, bathrooms, toilets and laundries.
- External balconies and decks prior to the installation of a covering material such as tiles or non-solvent topping systems.
- Exposed roof areas subject to weather and UV exposure.
- Suitable for waterproofing a broad range of substrates including concrete, cement render, brickwork, particleboard, plywood, plasterboard, gyprock, composition board and fibre cement sheeting.

## SUBSTRATE PREPARATION

Before the application of Boscoseal AC2, all surfaces must be clean, dry and structurally sound. The substrate must be free of voids, curing compounds, sharp objects, laitance, loose material, oils, grease or sealers.

## PERFORMANCE PROPERTIES

Typical properties conducted at 25°C and 50% RH

Colour	White or Grey
Recoat time	2-3 hours between coats (in external)
Elongation	Approx. 500%
Tensile Strength	1.9N/mm <sup>2</sup>
Cure before tiling	Minimum 3 days
Full cure	7 days
Application Temperature	10°C to 35°C
Flammability	Non-flammable

New concrete must be cured for 28 days. Mortar beds and cement render must be cured for 7 days.

Do not apply over concrete slab containing high moisture content.

Holes, non-structural cracks over 5mm and other particularly rough surfaces must be repaired using suitable repair mortar.

Very 'boney' or porous concrete must be primed or moisture sealed prior to any application (see priming).

All cement sheet joints and movement joints designed in base substrates where primer or Boscoseal AC2 membranes will be in direct contact, must be sealed with Bostik neutral cure silicone or Simson SMP joint sealants prior to application. Sealants must not be applied in, or to, moist or damp surfaces.

Fibrous cement sheeting and plasterboard must be installed in accordance with manufacturer's directions.

## APPLICATION INSTRUCTION

### PRIMING

All substrates must be primed.

Porous surfaces must be primed with Bostik Hydroment 425. Allow Hydroment 425 to dry approximately 30 minutes prior to application of Boscoseal AC2.

Very 'boney' or porous concrete may require more than one coat of Hydroment 425 to fill and penetrate the pores of the concrete.

Non porous surfaces such as existing tiles and burnished concrete require priming with Bostik Ultra NP Primer. Metal surfaces and PVC pipes should be primed with Bostik 5077 primer.

All designated primer must be applied in accordance with the current applicable primer technical data sheet.

For Pre-treated or suspect surfaces, contact Bostik technical service.

### **MOISTURE / VAPOUR BARRIER**

Boscoseal AC2 must not be applied to surfaces that are moist or damp. Applications to these surfaces can result in adhesion failure and surface bubbling of the membrane.

Application requiring access onto moist, 'green' or uncured concrete will first require the application of Bostik Moisture Seal epoxy vapour barrier which will act as a curing compound and moisture transmission barrier. Bostik Moisture Seal must be applied in a two-coat system as per Technical Data Sheet. Boscoseal AC2 must be applied immediately the second coat 'tack off'.

If Boscoseal AC2 cannot be applied within 24 hours of the second coat of Moisture Seal curing, a third coat must be applied.

### **CRACKS & NARROW JOINT SEALING**

All cracks must be cleaned with loose material removed.

For cracks and joints up to 5mm, apply a bead of Bostik Neutral Cure Silicone into the crack and extending 5mm either side. Tool smooth with spatula. Once the silicone is tack free, prime the repaired area with Bostik AC Primer to a width of 150mm each side of repair. Allow AC Primer to dry approximately 30 minutes. Apply two coats of Boscoseal AC2 over the primed area achieving a minimum dry film thickness of 1.2mm.

Cracks over 5mm must be repaired and designed with movement joints sealed as detailed in substrate preparation section.

### **INTERNAL WET AREAS : SEALING CORNERS & WASTE OUTLETS**

Do not use Polyurethane based sealants in these applications.

Ensure fall required in the screed to shower recess base, pipe outlets, angles and drainage is installed correctly.

All corners and substrate gaps around taps, shower outlets, waste outlets, pipes, drains, flashings and nail/screw holes must be sealed using Bostik Neutral Cure Silicone or Simson SMP sealants.

Apply a 10mm bead of sealant by caulking gun directly into all wall/floor, hob/floor, hob/wall and wall/wall corners to intending tile height.

Sealant should be spatula tooled smooth around fittings and pressed into corners creating a triangular fillet. Allow sealant to tack off (approximately 30 minutes).

Apply primer after sealant tack off, to all areas intended

for Boscoseal AC2 application.

### **SHOWER MEMBRANE APPLICATIONS**

Primer applications must be dry.

#### **WALLS**

Apply Boscoseal AC2 to the internal wall corners extending out 100mm onto each wall of the shower using a paintbrush. Ensure all corners are well coated. This must extend past the the height of the shower rose. It is important to coat around any tap body protrusions through the wet area wall as per AS3740.

#### **SHOWER BASE**

The shower base is to be fully coated. Boscoseal AC2 must be dressed down into the waste at least 50mm.

Once the initial coating is dry, recoat the entire area to be waterproofed, including full cover over the initial coating.

### **WET AREA FLOOR & EXTERNAL DECKS APPLICATIONS**

Primer applications must be dry.

If the wet area floor, balcony or deck areas to be coated are subject to service or other building penetrations, it is recommended, if possible, to install a flange metal up stand around the penetration. Prime metal up stand with Bostik 5077 primer and seal off the perimeter of the penetration with a 10mm bead of Bostik Neutral Cure Silicone.

Apply Boscoseal AC2 into wastes, drains or onto puddle flanges. Boscoseal AC2 must be dressed down into the waste at least 50mm.

Apply a initial coat of Boscoseal AC2 either side of all wall/floor junctions and sheet flooring joints. Extend the coating at least 100mm either side of the joints.

Once the initial coating is dry, recoat the entire floor area to be waterproofed, including over the initial coating.

### **ROOF APPLICATIONS**

Boscoseal AC2 is recommended as a waterproof membrane for non-traffic areas. Application method is the same as for wet area floors/decks.

These areas of application should not be accessed until membrane has fully cured.

### **TILING AND MORTAR BED COVERING**

To eliminate possible surface contamination or damage, it is recommended tiling, mortar bed application or finished flooring installation be carried out it as soon as possible after full cure of the membrane. These installations may be carried out after the Boscoseal AC2, two-coat system has been allowed to cure for a minimum of 3 days at a temperature of 25°C (slightly longer in lower temperatures).

Movement joints provided in tiling should be filled with either Bostik Seal 'N' Flex 1 or FC Polyurethane sealant or Bostik neutral cure anti-fungal silicone sealant.

### **TILE ADHESIVE**

Bostik tile adhesives such as Ultra Mastik, Excelflex or

Fixall mixed with Hydroment 425 and/or equal may be used. Tile adhesive used shall be recommended and applied in strict compliance with manufacturer's instructions.

#### PRECAUTIONS

- Ponding test should be carried out after full curing (7 days).
- Do not apply where surface temperature is below 10°C or greater than 35°C.
- Boscoseal AC2 is neither a vapour barrier nor designed to stop hydrostatic head of water pressure. For this application, Bostik Moisture Seal should be used.
- Do not apply on wet, contaminated or friable substrates.
- Do not apply externally if raining or rain is imminent.
- Do not apply to surfaces with protective coatings without prior consultation with Bostik.
- The rate of cure will be dramatically reduced when air or substrate temperatures are below +10°C or if apply over a vapour barrier or untreated concrete.
- The application rate of Boscoseal AC2 should not be extended over the recommended coverage of 1 litre per square metre or under 0.8mm wet film thickness in one application.
- A third coat of Boscoseal AC2 may be necessary if imperfections in the cured membrane are present.
- Do not dilute with water or extend with cementitious powders or other additives.
- Boscoseal AC2 requires atmospheric conditions to cure. It should not be used in totally confined or air free spaces.
- Boscoseal AC2 should not be used as a wearing surfaces for heavy foot traffic or vehicle traffic.
- Do not apply over treated pipe.
- Totally impervious substrates such as epoxies and rigid fibreglass require priming.
- Do not apply Boscoseal AC2 at RC Tanking structure areas, eg : water tank, swimming pool, water features pond, planter box and etc.
- Boscoseal AC2 will not span gaps and should only be applied to continuous surfaces.
- Boscoseal AC2 water based membrane must not come in direct contact with Polyurethane sealants in any application.

The information and recommendations relating to the application and end-use of the product are given in good faith and based on tests which we believe to be reliable. Differing materials, substrates, environments, site conditions, and product storage, handling and application may affect results. However, no warranty in respect of merchantability or fitness for a particular purpose, nor any liability arising out of any legal relationship, whatsoever, can be inferred either from this information, or from any written recommendations, or from any other advise offered. No guarantee of their accuracy can be made because of the great range of field conditions and variation encountered in raw materials, manufacturing equipment and methods. Thus, the products are sold with limited warranty only, and on condition that purchasers will make their own tests to determine the suitability of the product for their particular purposes. Under no circumstances will Bostik be liable to anyone except for replacement of the products or refund of the purchase price.

- Any intention use of Boscoseal AC2 out of specified uses, should refer to Bostik technical services for approval.

#### P.A.T.S. PROGRAMME

(Pretested Adhesion To Substrate)

Bostik offers a service in which a program has been established to eliminate potential field problems by pre-testing Bostik coatings and membranes with samples of building materials to which the systems will be applied. This service is available on large projects where pre application testing will aid in determining the proper surface preparation method to achieve optimum adhesion. Consult a Bostik representative for further information.

#### RECOMMENDED COVERAGE

2 coats at 1kg/m<sup>2</sup>/coat.

#### PACKAGING

25 kg plastic pail.

#### CLEAN UP

Thoroughly clean all tools and equipment with water after use.

#### STORAGE AND SHELF LIFE

Store in original sealed container under cover and dry conditions. Boscoseal AC2 has a shelf life of 12 months in original unopened container if stored between 5°C and 35°C. Do not freeze.

#### HEALTH AND SAFETY

If swallowed, do not induce vomiting. Give a glass of water, contact a doctor or Poisons Information Centre. For more detail information refer to Material Safety Data Sheet.

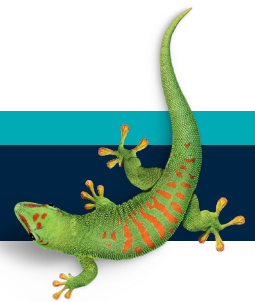


**032-091-2158**

Environmentally Preferred Coating

#### BOSTIK HOTLINE

**Smart help**  
**+606 678 9788**



**Bostik Findley (Malaysia) Sdn. Bhd.** 1994010000474 (286152-V)

Lot 112 & 113, Kawasan Perindustrian Senawang,  
70450 Seremban, Negeri Sembilan,  
Malaysia

Tel : +606 678 9788 Fax : +606 678 9766

**www.bostik.com**  
**an Arkema company**

This document supersedes all previously published literature.