



# BOSCOSEAL PUW

WATER-BASED MODIFIED POLYURETHANE WATERPROOFING MEMBRANE

## KEY FEATURES

- Water-based
- One component, No mixing
- Early access for following trades
- Brush, roller or trowel applied
- Does not brittle with age
- Exhibits tenacious adhesion to masonry
- Non re-emulsifying

## DESCRIPTION

Boscoseal PUW is one component water-based modified Polyurethane liquid applied waterproofing membrane. After curing it provides a tough, highly elastomeric, impervious barrier to moisture. Suitable for application by brush, roller or trowel.

## RECOMMENDED USES

- Masonry walls, foundations and basements
- Roof lap slabs, balconies and courtyard
- Beneath terrazzo, paving and quarry tiles
- Bathrooms, laundries and wet areas prior to tiling
- Planter boxes

## SUBSTRATE PREPARATION

All surfaces must be clean, dry, free of voids, curing compounds, loose materials, oil, grease, sealers and determined to be structurally sound before application of Boscoseal PUW. New concrete must have cured for 28 days.

Cracks and other defects must be repaired. Seal all cracks or joints of 2mm in width with Bostik Ultraseal Fillet and Seal before waterproofing application.

Boscoseal PUW can be applied immediately over Ultraseal Fillet and Seal after initial set of approximately 45 minutes at 25°C.

## APPLICATION INSTRUCTION

### PRIMING

Boscoseal PUW does not require priming on clean and dry substrates but necessary for areas of infiltration. Dilute a portion of Boscoseal PUW with 2 portion of clean water as primer. Allow primer to cure for approximate 30 minutes.

## PERFORMANCE PROPERTIES

Typical properties conducted after 7 days at 25°C and 50% RH

Form	Smooth Paste
Colour	Black Coffee
Shore 'A' Hardness	25
Elongation	> 700%
Puncture Resistant	1.5 kgf
Tensile Strength	20 kgf/cm <sup>2</sup>
Moisture Vapour transmission	6.2g/hour/ft <sup>2</sup> x h x inc x Hg
Cure Time	24 hours
Flammability	Non Flammable

Conforms to ASTM D-412, ASTM E-154, ASTM E-96

## MIXING

Boscoseal PUW does not require any mixing. Stir product to an even smooth consistency before use.

## PLACING

Boscoseal PUW can be applied by brush, roller, trowel or squeegee.

Boscoseal PUW should be applied to achieve a dry film thickness of minimum 1mm for optimum performance. To achieve this dry film thickness, apply Boscoseal PUW at 1 kg per m<sup>2</sup> per layer x 2 layers. Minimum 2 layers application needed.

Extremely porous surfaces should be filled prior to application. Apply Boscoseal PUW evenly to avoid thin spots, air entrapment or pin holes. Any defects can be repaired by over coating with Boscoseal PUW.

For applications where two layers of Boscoseal PUW are required, allow 8 hours between layers.

Protection boards must be used to protect the membrane before back filling or concreting. If Boscoseal PUW is damaged, repair by cleaning the surface and recoat with another layer of Boscoseal PUW.

## PRECAUTIONS

Boscoseal PUW should not be applied on wet,

contaminated or friable substrate.

Rate of membrane cure will be inhibited when air or substrate temperatures are below 5°C.

Should not be applied greater than 3kg per m<sup>2</sup> in one application as the likelihood of foaming may occur.

Requires atmospheric moisture to fully cure. It should not be used on totally confined or air free spaces.

Mortar bed screed or tiling should not be carried out until membrane is fully cured.

To eliminate possible surface contamination, tiling work should be carried out as soon as possible after curing or following trade protection may be required.

Bostik Boscoseal PUW membrane should never be used as an exposed finish or as top coating exterior membrane.

Any intention use of Boscoseal PUW out of recommended uses, should refer to Bostik technical services for approval.

Not suitable to apply on any form of lightweight concrete.

### P.A.T.S. PROGRAMME

(Pretested Adhesion To Substrate)

Bostik offers a service in which a program has been established to eliminate potential field problems by pre-testing Bostik coatings and membranes with samples of building materials to which the systems will be applied. This service is available on large projects where pre application testing will aid in determining the proper surface preparation method to achieve optimum adhesion. Consult a Bostik representative for further information.

### RECOMMENDED COVERAGE

1 kg/m<sup>2</sup>/layer x 2 layers

### PACKAGING

20 kg plastic pail

### CLEAN UP

Boscoseal PUW can be cleaned with water before curing.

The information and recommendations relating to the application and end-use of the product are given in good faith and based on tests which we believe to be reliable. Differing materials, substrates, environments, site conditions, and product storage, handling and application may affect results. However, no warranty in respect of merchantability or fitness for a particular purpose, nor any liability arising out of any legal relationship, whatsoever, can be inferred either from this information, or from any written recommendations, or from any other advice offered. No guarantee of their accuracy can be made because of the great range of field conditions and variation encountered in raw materials, manufacturing equipment and methods. Thus, the products are sold with limited warranty only, and on condition that purchasers will make their own tests to determine the suitability of the product for their particular purposes. Under no circumstances will Bostik be liable to anyone except for replacement of the products or refund of the purchase price.

### STORAGE AND SHELF LIFE

Store material between 5°C and 30°C in cover and dry place out of direct sun light. Boscoseal PUW has a shelf life of 12 months from date of manufacturing if stored properly in original, sealed and unopened container.

### HEALTH AND SAFETY

On contact, uncured membrane causes irritation. Gloves and protective goggles must be worn during stirring, application, and use. Avoid contact with skin, eyes and avoid breathing in vapour. If poisoning occurs, contact a doctor or Poisons Information Centre. If swallowed, do not induce vomiting. Give a glass of water. If skin contact occurs, remove contaminated clothing and wash skin thoroughly for a minimum of 15 minutes and see a doctor. For more detailed information, refer to Material Safety Data Sheet.

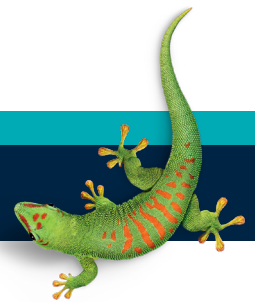


032-091-2159

Environmentally Preferred Coating

### BOSTIK HOTLINE

Smart help  
+606 678 9788



**Bostik Findley (Malaysia) Sdn. Bhd.** 1994010000474 (286152-V)

Lot 112 & 113, Kawasan Perindustrian Senawang,  
70450 Seremban, Negeri Sembilan,  
Malaysia

Tel: +606 678 9788 Fax: +606 678 9766

**www.bostik.com**  
**an Arkema company**

This document supersedes all previously published literature.