



8015 COMBI LIGHT

TECHNICAL DATASHEET

Version: 2018-05-15

PRODUCT DESCRIPTION

[iplus FieldValue='Product description'/]

AREA OF USAGE

[iplus FieldValue='Use'/]

WORKING INSTRUCTION

[iplus FieldValue='Instruction for use'/]

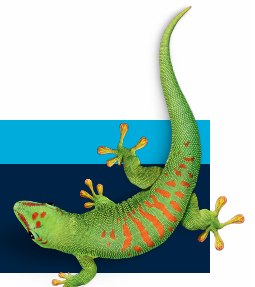
SAFETY

[iplus FieldValue='Environment and health'/]

CONTACT US

TEL +46 (0)42-19 50 00

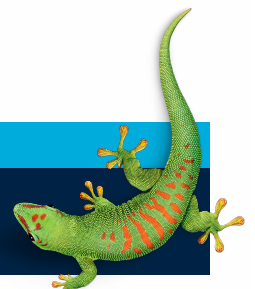
info.se@bostik.com



CONTACT US

TEL +46 (0)42-19 50 00

info.se@bostik.com



Bostik AB, Strandbadsvägen 22, Box 903, SE-251 09 Helsingborg Tlf: +46 (0)42-19 50 00, Fax: +46 (0)42 19 50 21, www.bostik.se

Disclaimer: The technical data we present, as well as our instructions and recommendations are all based on a variety of tests and our experience. They are intended to help the user to find the most suitable working method and get the best possible results. Since the users working conditions is beyond our control, we cannot accept any responsibility for the results obtained by the product.

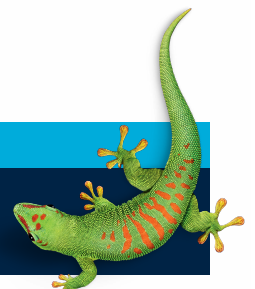
TECHNICAL DATA

[iplus CustomFunction='TechnicalDataSections'/]

CONTACT US

TEL +46 (0)42-19 50 00

info.se@bostik.com



Bostik AB, Strandbadsvägen 22, Box 903, SE-251 09 Helsingborg Tlf: +46 (0)42-19 50 00, Fax: +46 (0)42 19 50 21, www.bostik.se

Disclaimer: The technical data we present, as well as our instructions and recommendations are all based on a variety of tests and our experience. They are intended to help the user to find the most suitable working method and get the best possible results. Since the users working conditions is beyond our control, we cannot accept any responsibility for the results obtained by the product.