



FLOOR GROUT

TECHNICAL DATASHEET

Version: 2019-07-01

PRODUCT DESCRIPTION

Bostik Floor Grout is a cement-based floor grout for tiles outdoor and in.

AREA OF USAGE

For grouting tiles in dry and wet rooms with grout widths of 2-15 mm.

WORKING INSTRUCTION

Preparation: Remove any hard materials forced up over half the grout depth and other contaminants.

Mixing: Add approx. 3.8 litres of clean water to 15 kg of grout (always water first). Mix for 2 min. with a strong, slow-rotation electric drill fitted with whisk. Leave to stand for a few minutes before mixing again. The grouts must be clear of any hard materials before grouting. Application: Spread the grout evenly with a grout spatula diagonally over the tiles. A 45 degree angle on the spatula is recommended. Scrape off grout from the tiles without going into the grout channels. Washing: Before washing, check the consistency of the grout. Drying time before washing can vary according to temperature, ventilation etc. normally approx 45 min. at 20 C. Wash diagonally with clean water and a grout sponge with handle. Change water as required. If required, wash the tiles again after a few hours or the following day. Wash down the grouts a few days after grouting to achieve maximum strength. Underfloor heating should be switched off before grouting and not switched on again within 4 weeks.

Consumption: Approx. 0.3-2.0 kg/m² depending on grout with and ceramic tile format.

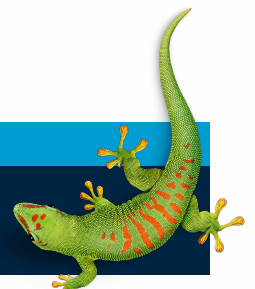
SAFETY

The product contains white cement. Can irritate skin. For more information, refer to the Safety Data Sheet.

CONTACT US

TEL +46 (0)42-19 50 00

info.se@bostik.com



TECHNICAL DATA

| PROPERTIES BEFORE APPLICATION | |
|-------------------------------|--|
| Binder | Special cement |
| Filler | Natural sand, max. 0.5 mm |
| Grout width | 2-15 mm |
| Density | 1.7 kg/litre |
| Colour | Light grey, medium grey, grey, anthracite grey |
| Use within | approx. 1 hour at + 20 C |
| Product properties | CG1 (EN 13888) |
| Material consumption | 1.5 – 4.0 kg/m ² depending on tile format |
| Temperature | Can be applied from +10 to +25°C |
| Cleaning | Immediately with water |
| Pack size | 15 kg |
| Storage time | 12 months in a dry, cool and unopened package. |

CONTACT US

TEL +46 (0)42-19 50 00

info.se@bostik.com

