



PERFECT SEAL DECORATION

TECHNICAL DATASHEET

Version: 2020-02-24

PRODUCT DESCRIPTION

Single-component, water-based, odourless and non-corrosive acrylic latex sealant. Quick-drying, tamper-proof and paintable. Does not discolour surrounding materials.

AREA OF USAGE

For sealing and joining Indoors in concrete, wood, stone, brick, plasterboard, etc. For joining around windows and doors. Use behind coving and skirting board for the prevention of draughts and soundproofing, and around valves and pipe penetrations.

WORKING INSTRUCTION

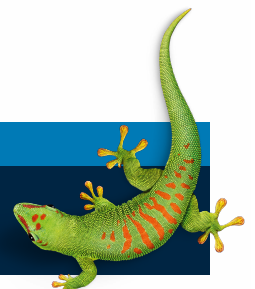
1. Make sure that the surfaces are dry and clean. Weak and porous Surfaces should be primed with 1 part acrylic compound mixed with 2 parts water. The primed surface must be completely dry prior to joining. If necessary, use an approved bottom material on the bottom of the joint to achieve the right relationship between joint width and joint depth. For example, Bostik Bottom Strip ("Bottningslist") can be used. The joint width should be at least 4 mm and no more than 20 mm. The joining compound should not be applied where the temperature is below +10°C or the relative humidity is above 50%. Apply the compound with a caulking gun. The compound should be applied so that it fills the joint completely. Press the compound immediately after application so that it achieves good contact with the sides of the joint. Then smooth the compound with a moist sealant smoother, sponge or putty knife. For the best results, the latex compound must not be allowed to stick to the bottom of the joint, as this prevents the compound from following the joint's movements. Cleaning: Remove any excess compound and clean with water.

SAFETY

According to applicable legislation, the product's contents are not classified as a health or fire hazard. Please see the safety data sheet for additional information.

CONTACT US

TEL +46 (0)42-19 50 00
info.se@bostik.com



TECHNICAL DATA

Properties before application	
Material type	Acrylic latex
Consistency	Soft, smooth compound
Curing system/method	Evaporation of water
Application temperature	+10 to + 40°C
Solvent	Water
Flammable	No
Properties after application	
Skin formation	Indoors 5-10 minutes at +20°C
Drying time	Approx. 72 hours (5x5 mm) at +23°C and 50% RH
Movement uptake	±12,5% of original joint width
Temperature resistance	-20° to +75°C
Resistance to ageing	Very good resistance to ozone and UV light
Paintable	Yes, with plastic and alkyd paint, after 24 hours at the earliest. Painting with highly filled paint entails the risk of the paint cracking.

CONTACT US

TEL +46 (0)42-19 50 00

info.se@bostik.com

