



SILICONE WETROOM

TECHNICAL DATASHEET

Version: 2019-06-28

PRODUCT DESCRIPTION

Anti-mould treated, single component, acetic acid-cured silicone grouting compound. Fast-curing, elastic, with excellent resistance to ageing. Anti-mould treated product. See technical data. Fulfills requirements according to ISO 11600

AREA OF USAGE

Sealing and grouting wet room areas such as showers, bathrooms, kitchens and anywhere else where there is a risk of mould. Particularly good adhesion properties on materials such as tile, porcelain, glass, enamelled and glazed surfaces, stainless steel, anodized aluminium, polyester, acrylic, etc.

WORKING INSTRUCTION

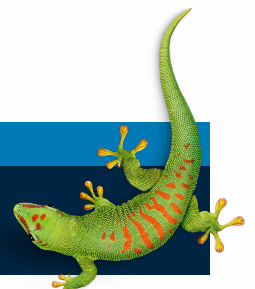
Preparation of grout surfaces All implements and tools used for application must be absolutely clean and dry. Humidity and water accelerate curing, but can make application impossible in extreme cases. All implements and tools must be cleaned after use, as hardened grout can only be removed mechanically. We recommend e.g. xylene or white spirit for cleaning. As for all grouting work, grout surfaces must be dry and free of oil, dust and foreign particles. Metal and glass surfaces must always be degreased using an oil-free solvent. Priming No primer should be used on the following materials: glass, porcelain, glazed, enamelled or anodised aluminium surfaces. Bottom material The grout must always be applied so that it only adheres to both sides and not its bottom. We recommend Bostik Bottningslist. If the grout is too shallow for bottom tape, polyethylene tape can be used. Grout application The best adhesion is achieved when the grout is well filled by extrusion and the surface then pressed smooth to ensure the material makes full contact with the grout surfaces. Finishing the grout After application of the sealant, smooth the surface with weak soapy water using a wetted grout smoother or the like. Ensure that the water from the grout smoother does not penetrate between sealant and grout side. Moistening the surface accelerates curing, thus reducing the risk of contaminating the grout surface. Note! Smoothing the surface and removing tape from the grout edges must be done immediately after application, as the surface of Bostik Silicone Wetroom quickly dries. Grout dimensioning It is extremely important that the grout width is correctly dimensioned at the construction stage to cope with expected grout movement and for maximum permitted movement of the sealant. A general rule for grout dimensioning is grout width/depth should be in the ratio of 2:1. Grout depth should be no less than 4 mm.

SAFETY

Uncured sealant releases acetic acid – exercise caution. Ensure good ventilation to avoid acetic acid fumes irritating the eyes. Keep children from contact with uncured grout or sealant! Cured sealant is non-toxic and totally free of acetic acid. Silicone Wetroom contains fungicides. For more information, refer to the Safety Data Sheet.

CONTACT US

TEL +46 (0)42-19 50 00
info.se@bostik.com



TECHNICAL DATA

Properties before application	
Type of material	Silicone rubber
Consistency	Soft, thixotropic compound
Curing system	Acetoxy
Density	1.01 g/cm ³
Working temperature	+5 to +40°C – not for use on sub-zero surfaces
Flammable	No
Properties after application	
Non-adhesive surfaces	Approx. 36 minutes. Workable for 5-8 minutes.
Curing	1-2 mm per day depending on air humidity and temperature
Hardness	around 18° Shore A
Elasticity module	around 0.4 N/mm ² at 100% elongation
Temperature resistance:	-50°C to +150°C short-term up to +200°C
Ageing resistance	Excellent resistance against UV rays, ozone and climatic effects
Chemical resistance:	Excellent against most chemicals. Consult Bostik AB if in doubt. Fulfils mould test norms according to ISO-846/1978 methods A and B.
Can be recoated:	No

CONTACT US

TEL +46 (0)42-19 50 00

info.se@bostik.com

