



DUO-SIL[®] Color Guide

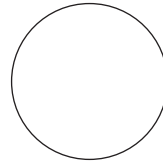
URETHANE ACRYLIC SEALANT & ADHESIVE



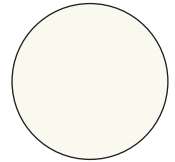
DUO-SIL®

A Perfect Match for Every Application

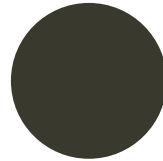
TOP
20
COLORS



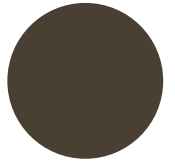
2000
CLEAR



2001
WHITE



2201
BRONZE



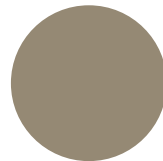
2203
MUSKET BROWN



2303
CLAY



2403
WICKER



2408
HEATHER GRAY



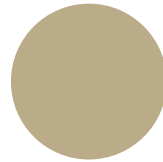
2426
WOODLAND MIST



2427
ALMOND CREAM



2428
TAN



2429
BEIGE



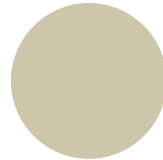
2435
ALMOND BEIGE



2443
IVORY CREAM



2448
ANTIQUE WHITE



2449
PEARL



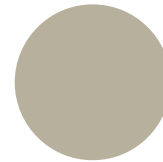
2451
PARCHMENT



2454
FRENCH VANILLA



2458
COBBLESTONE CLAY



2502
SILVER ASH



2942
ANTIQUE LINEN

For more information, please visit: www.bostik.com/colorlist

DUO-SIL® Colors



2003
BLACK



2205
ROYAL BROWN



2206
TOFFEE



2207
IMPERIAL BROWN



2211
TUDOR



2213
BUCKSKIN



2215
BERKSHIRE BROWN



2219
TERRA BRONZE



2221
MAHOGANY



2223
AMERICAN WALNUT



2301
HICKORY



2302
ROYAL CLAY



2304
TRUE TAUPE



2305
SYCAMORE



2307
HEATHER



2308
CACTUS



2309
DRIFTWOOD



2311
SMOKE



2313
TIMBER STONE



2314
SABLE



2401
PRAIRIE SAND



2404
SAND



2405
DESERT SAND



2407
SIERRA TAN



2409
SANDSTONE



2411
DOESKIN



2412
MAPLE



2413
ADOBE TAN



2414
CARAMEL



2415
PALOMINO BEIGE



2416
BUTTERSCOTCH



2417
TAUPE



2418
HONEY WHEAT



2421
THISTLE



2423
COBBLESTONE



2424
SANDY BEACH



2425
COLONIAL TAN



2431
MISSION BEIGE



2433
CANVAS



2439
ANTIQUE IVORY



2441
CLASSIC CREAM



2445
ALMOND



2447
ROYAL BEIGE



2450
VANILLA



2452
SUMMER WHEAT



2453
STONE



2456
HAZEL BROWN



2500
ICE GRAY



2501
CHARCOAL GRAY



2503
WINTER ASH



2504
ROYAL GRAY



2505
SHALE



2509
GRANITE GRAY



2511
PEARL GRAY



2513
SILVER BIRCH



2503
GRAYSTONE



2517
STERLING GRAY



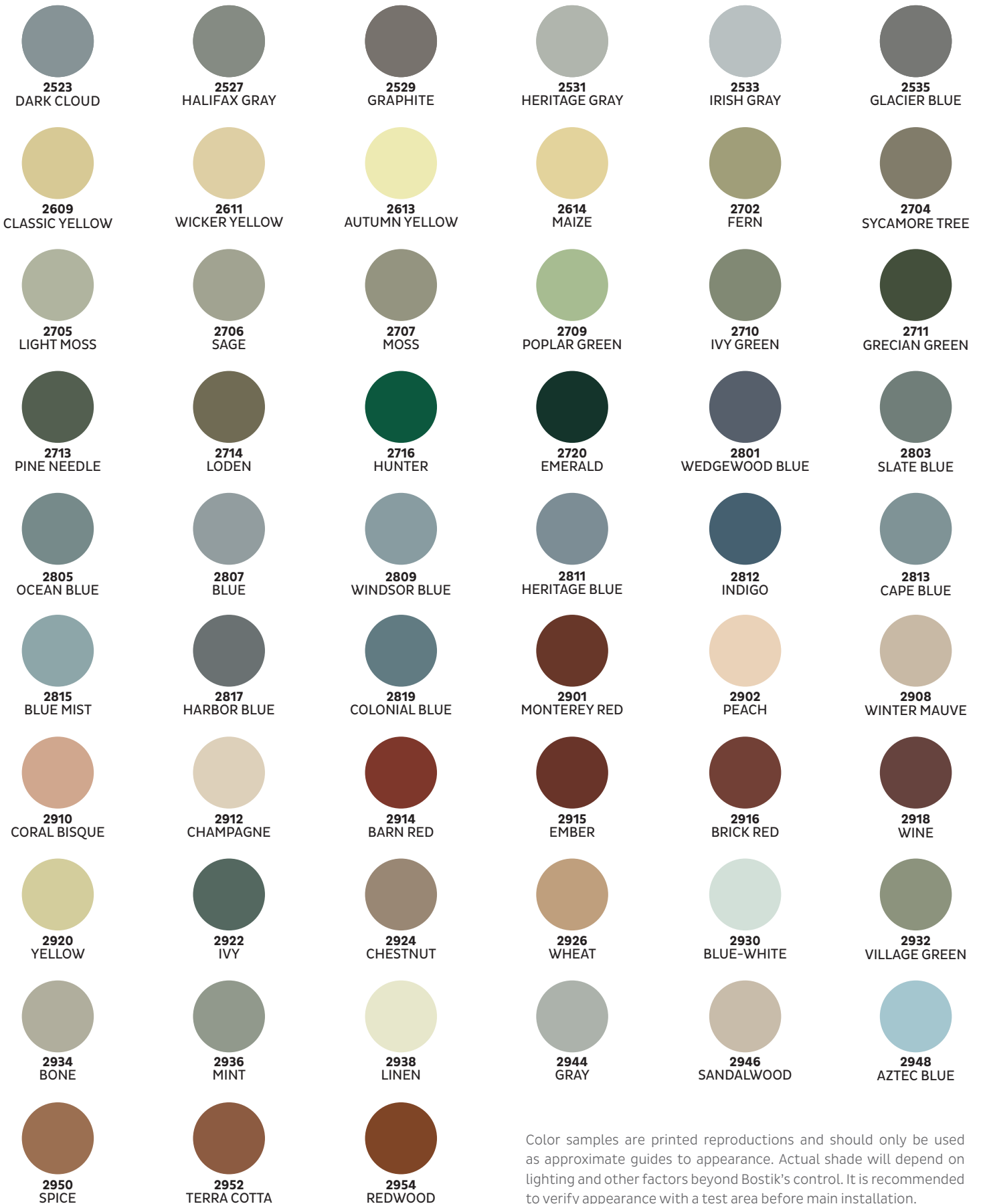
2518
PEWTER GRAY



2519
ASPEN GRAY



2521
DOVE GRAY



Color samples are printed reproductions and should only be used as approximate guides to appearance. Actual shade will depend on lighting and other factors beyond Bostik's control. It is recommended to verify appearance with a test area before main installation.

**NEW LOOK!
SAME GREAT PRODUCT!**



DUO-SIL®

URETHANE ACRYLIC SEALANT & ADHESIVE



KEY FEATURES

- Interior and exterior use
- Weatherproof and mildew resistant
- Available in 145+ colors, including clear

DESCRIPTION

Bostik DUO-SIL® is a special formulation of urethane and acrylic emulsion which can be used as an adhesive or caulking compound for commercial and residential construction.

DUO-SIL® as a sealant can be used on vinyl, aluminum and fiber cement siding, windows, doors, brick molding, counter tops, showers and most areas where a sealant is needed.

DUO-SIL® as an adhesive has superior bond to most building substrates with no need for primer. DUO-SIL® will adhere to wood, metal, gypsum board, vinyl, PVC, cove base, molding, foam board and many more building products.

PRODUCT FEATURES

- Easy to apply
- Excellent adhesion to most common building substrates
- Available in 145+ industry colors, including clear
- Mildew resistant
- Flexible
- Paintable after 1-2 hours
- Low VOC
- Will not crack or fade
- Non-hazardous and non-flammable

APPLICABLE STANDARDS

DUO-SIL® meets or exceeds the standard specification for latex sealants ASTM C834-00, Type C, Grade 0° C.

PACKAGING

Available in 10.1 fl oz (300 ml) cartridges – 12 per case. 140 cases per pallet.

Available in 20 fl oz (591ml) sausages, white only – 12 per case. 45 cases per pallet.



APPROXIMATE COVERAGE CHART

Coverage for 10.1 fl oz (300 ml) Cartridge

Depth	Width			
	1/8"	1/4"	3/8"	1/2"
1/8"	99	49	33	24
1/4"	—	24	20	12
3/8"	—	—	11	8
1/2"	—	—	—	6

Linear Feet per 10.1 fl oz Cartridge



For more information, contact us at:
1-800-359-6398 | www.bostik.com/us



Bostik is a leading global adhesive specialist in industrial, construction and consumer markets. For more than a century, we have been developing innovative adhesive solutions that are smarter and more adaptive to the forces that shape our daily lives.

An **ARKEMA** Company
INNOVATIVE CHEMISTRY